



Maxwell CCC Presentation
15 November 2023

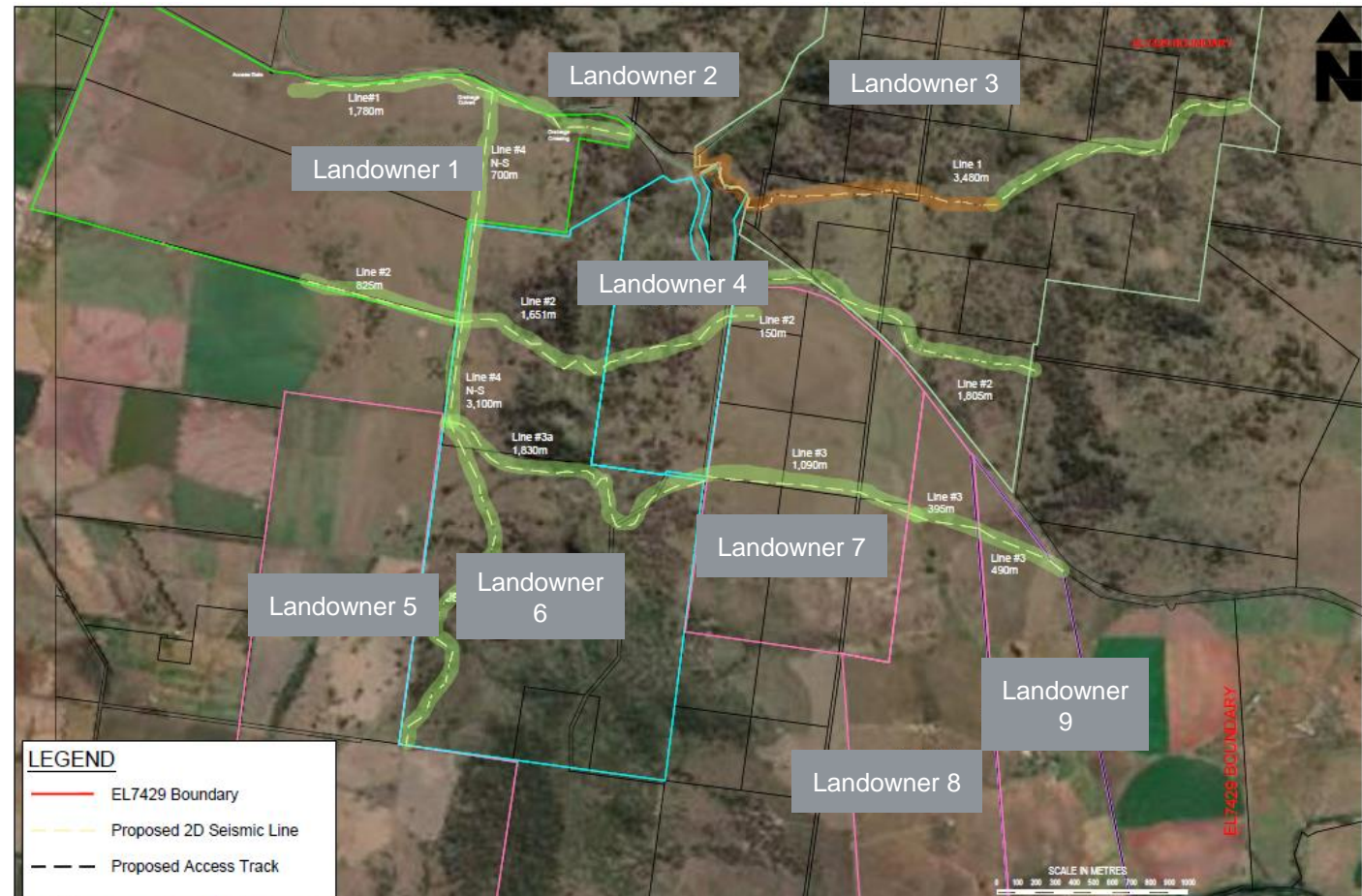
Meeting Agenda

No.	Topic	Who
1	Welcome & Introductions	Chairperson
2	Apologies	Chairperson
3	Acknowledgement of Country	Chairperson
4	Declaration of Pecuniary Interests	Chairperson
5	Business Arising/Action Items	Chairperson
6	Correspondence	Chairperson
7	Spur Hill Exploration Licence Update	Doyle Pryde
8	Maxwell Underground Mine Update	Henk Lemmer and Donna McLaughlin
9	Management Plans and Environmental Performance	Donna McLaughlin and Alex Newton
10	Community Updates	Teagan Rutter
11	Community Questions	All
12	Edderton Solar Project – Introductory briefing from EDF-R	Hannah Coffey and Andy Winter
13	General Business	All
14	Next Meeting	Chairperson
15	Meeting close	Chairperson

7. Spur Hill Exploration Licence Update

Spur Hill Exploration

- Seismic data acquisition completed 06 November – 11 November
- Highlighted lines showing trace of acquisition, c. 15km
- Next step is data processing and review of forward program
- Rehab activities to begin through November



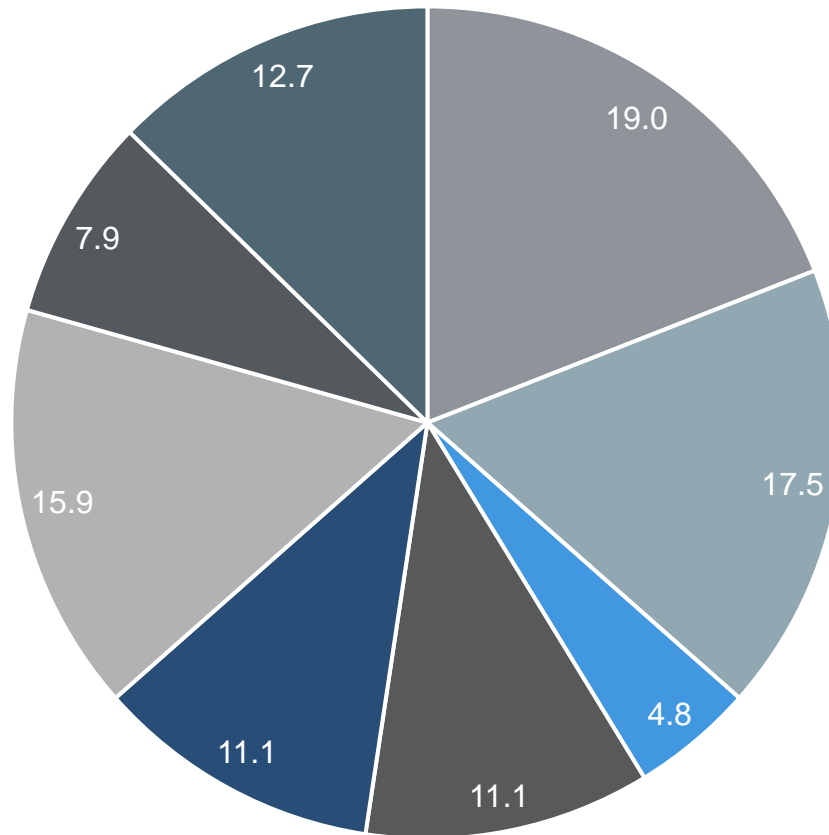
8. Update on Maxwell Underground Mine

Maxwell Underground Mine - Schedule

Calendar years	2022			2023			2024			2025			2026 Onwards		
Site readiness & Construction preparation	█	█													
Construction of Access Rd & MEA		█	█	█	█	█	█	█							
Construction of Mine Access Portals, Drifts & Vent Shaft			█	█	█	█	█	█	█						
Construction of site infrastructure			█	█	█	█	█								
Re-commissioning of CHPP & Infrastructure			█	█	█										
Onboarding Workforce				█	█	█	█	█	█						
Whynot Seam (B&P Operations)					█	█	█	█	█	█	█	█	█	█	█
Development Coal produced to set up for Longwall production									█	█	█	█	█	█	█
Longwall ordered, manufactured, delivered and installed			█	█	█	█	█	█	█	█					
Design, Construction & Commissioning of overland conveyor					█	█	█	█	█	█					
Longwall production												█	█	█	█

Workforce Snapshot - Residency

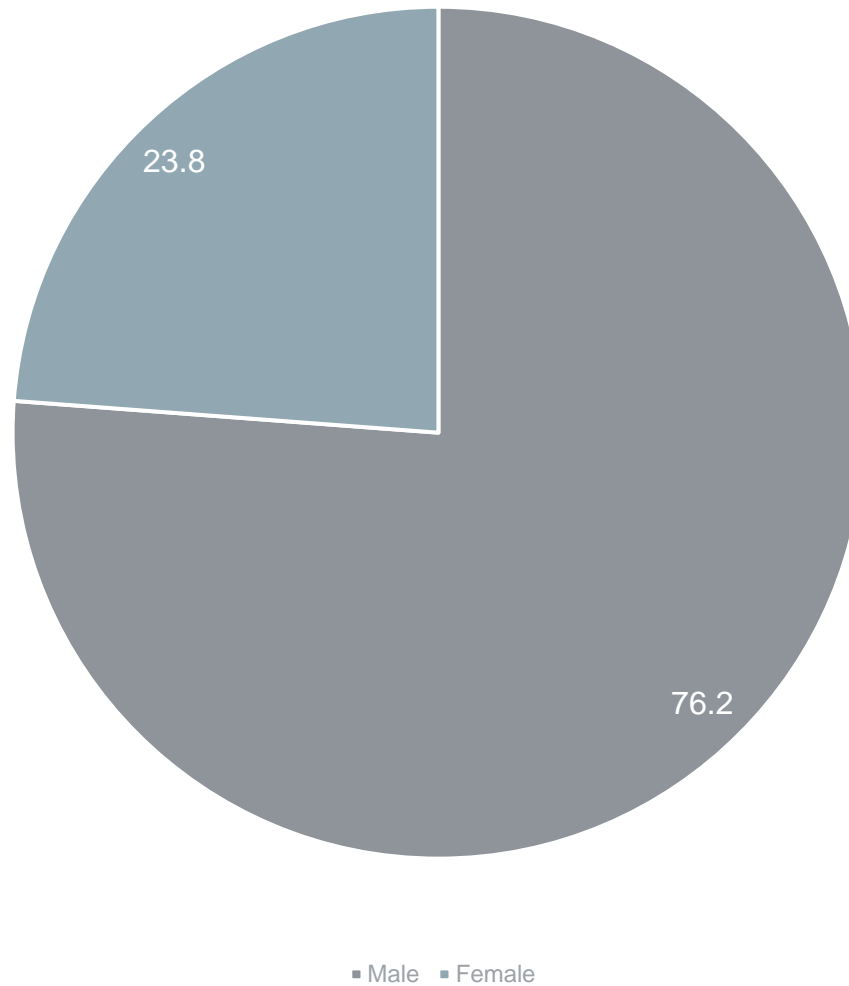
Residency Data (percentage)



■ Muswellbrook ■ Singleton ■ Upper Hunter ■ Maitland ■ Cessnock ■ Newcastle ■ Lake Macquarie ■ Other

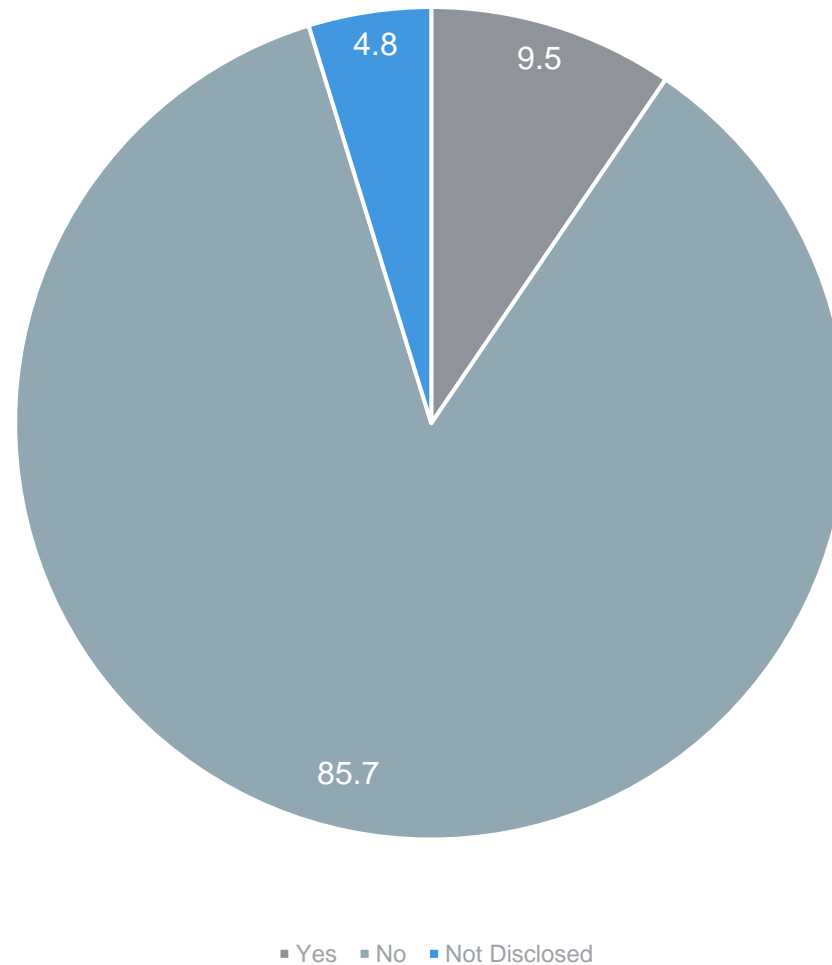
Workforce Snapshot – Gender

Gender Data (percentage)



Workforce Snapshot – ATSI

Aboriginal or Torres Strait Islander Data (percentage)



Access Road & Conveyor Trace

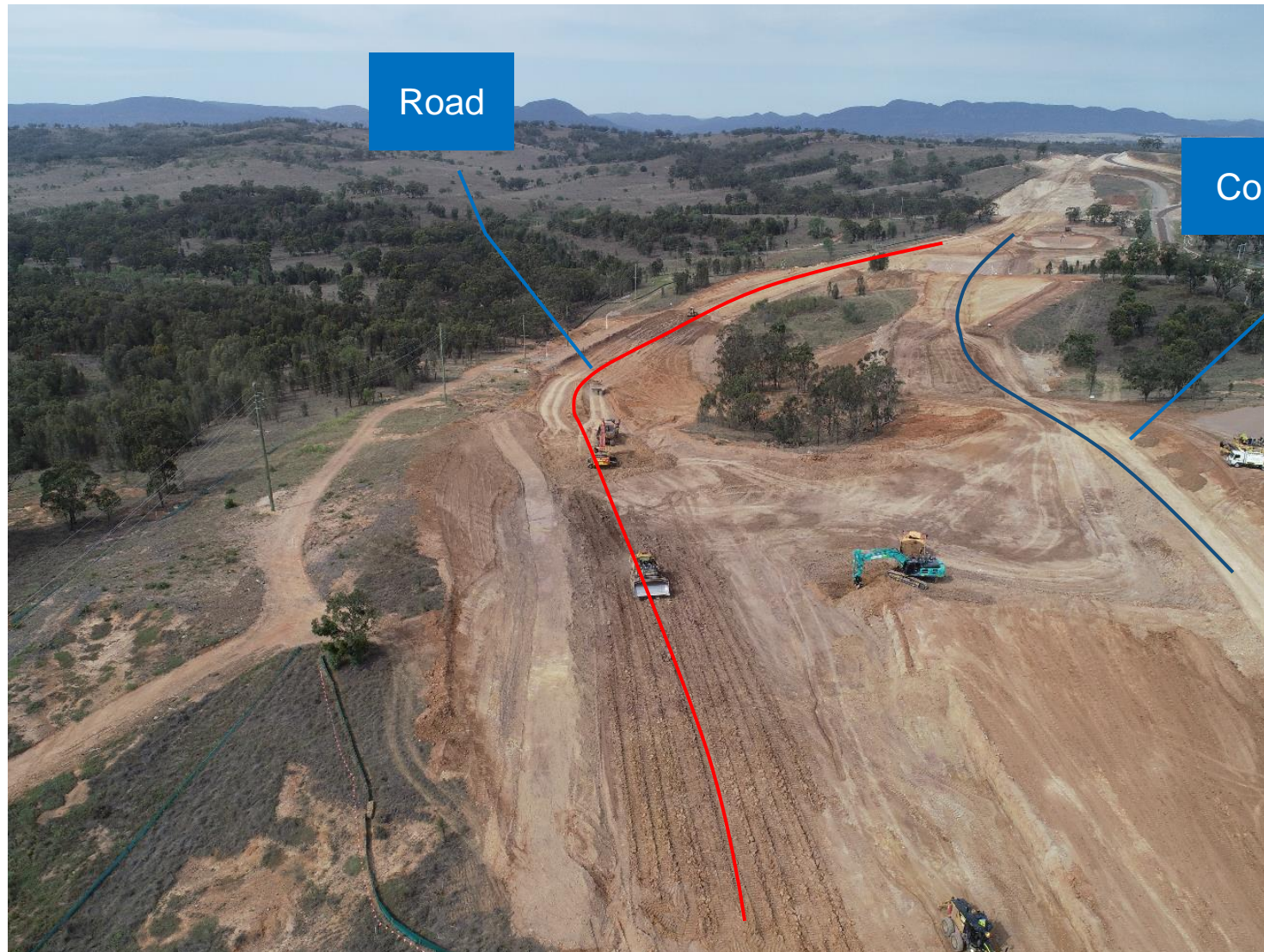
Conveyor Trace – September 23



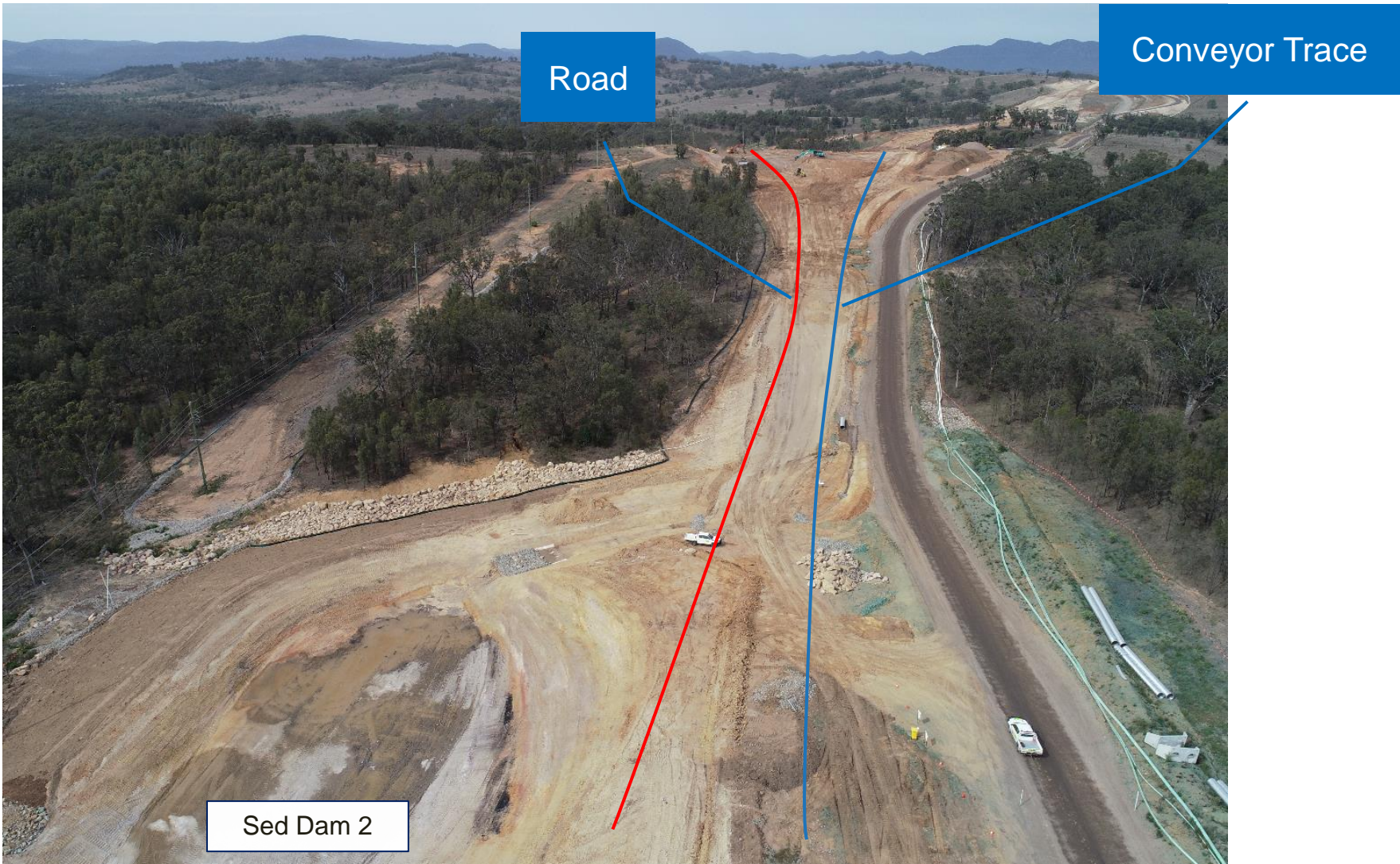
Conveyor Trace – October 23



Access Road & Conveyor Trace



Access Road & Conveyor Trace



Access Road & Conveyor Trace

Completed Conveyor Trace



9. Management Plans and Environmental Performance

Management Plan Updates

- The following management plans have been updated following approval of the Antiene Modification:

Management Plan	Submitted to DPE	Approved and or Finalised
Aboriginal Cultural Heritage Management Plan	Yes	
Air Quality and Greenhouse Gas Management Plan	Yes	Yes
Biodiversity Management Plan	Yes	
Bioremediation Management Plan	Yes	Yes
Bushfire Management Plan	N/A	Yes
Contaminated Materials Protocol	Yes	
Exploration Activities and Minor Surface Infrastructure Management Plan	Yes	
Pollution Incident Response Management Plan	N/A	Yes
Rehabilitation Management Plan	N/A	Yes
Spontaneous Combustion Management Plan	Yes	
Traffic Management Plan	Yes	
Visual Impact Management Plan	Yes	

- Work is continuing on the Whynot Extraction Plan.

Rehabilitation Update

- Spring tree planting (5,500) completed and removal and seeding (3.2ha) of redundant contour banks completed.
- Weed Control:
 - Continued mulching of *Acacia saligna*.
 - Spray regrowth of June's *Acacia saligna* mulch area.
 - Commence St John's Wort control
- Pest Control: shooting program in November. Total: 4 pigs, 80 rabbits and hares.
- Rehabilitation Remediation:
 - Contour bank realignment east Void.
 - Rock structure widening commenced.

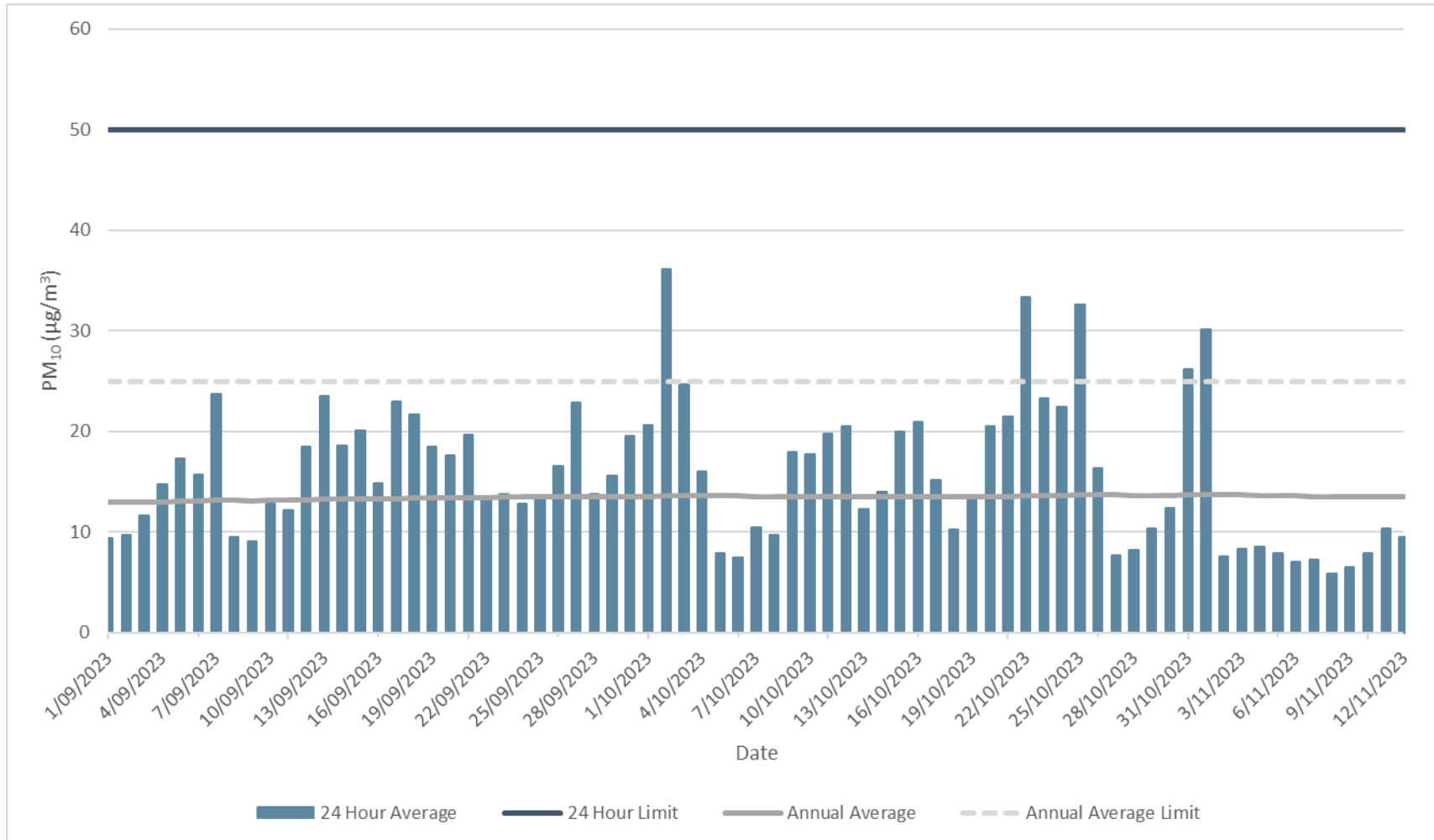


Tree planting and seeding area



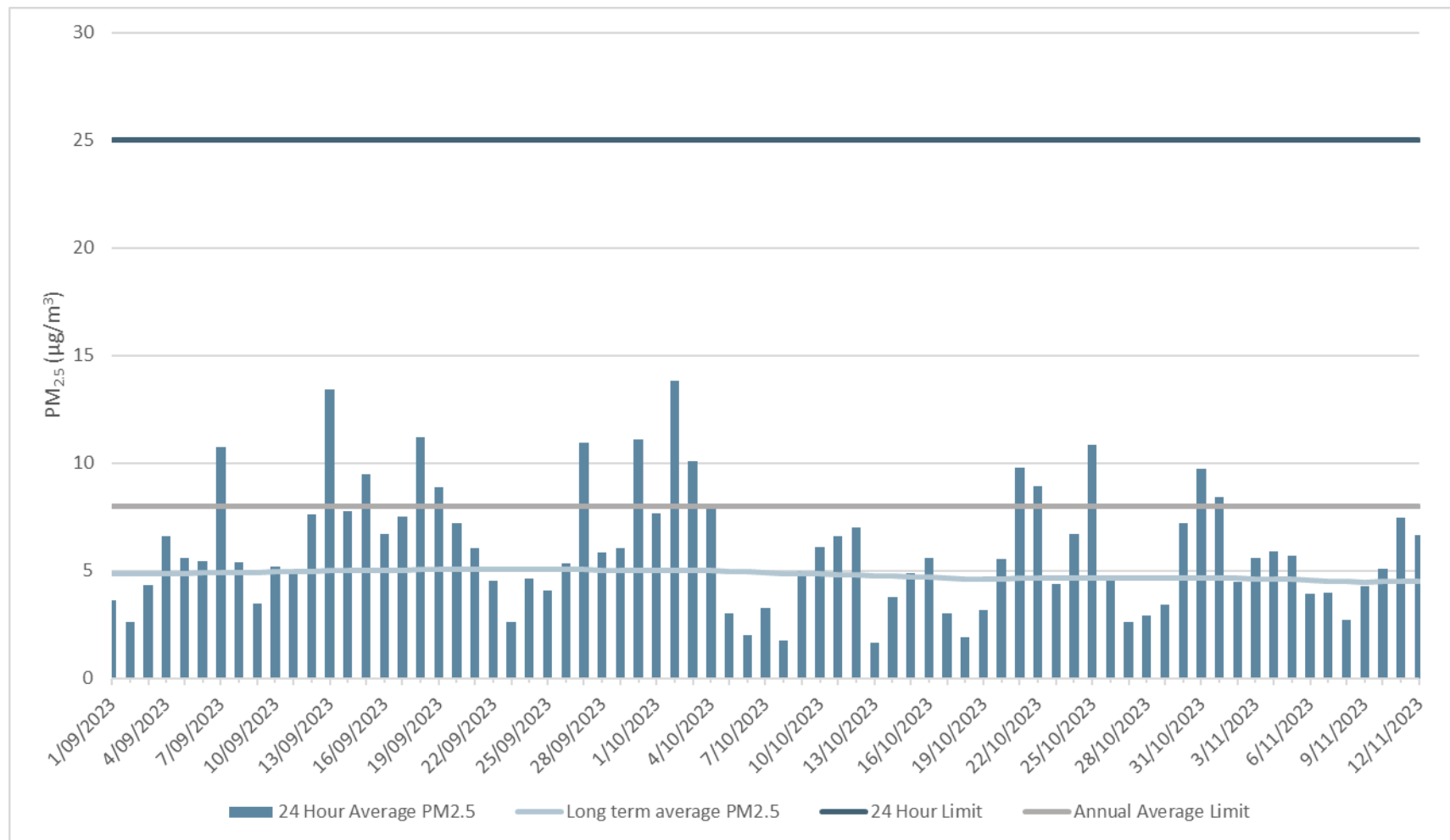
Rock Structure ID8 Upper

PM₁₀ at TEOM-1 (Maxwell Infrastructure)



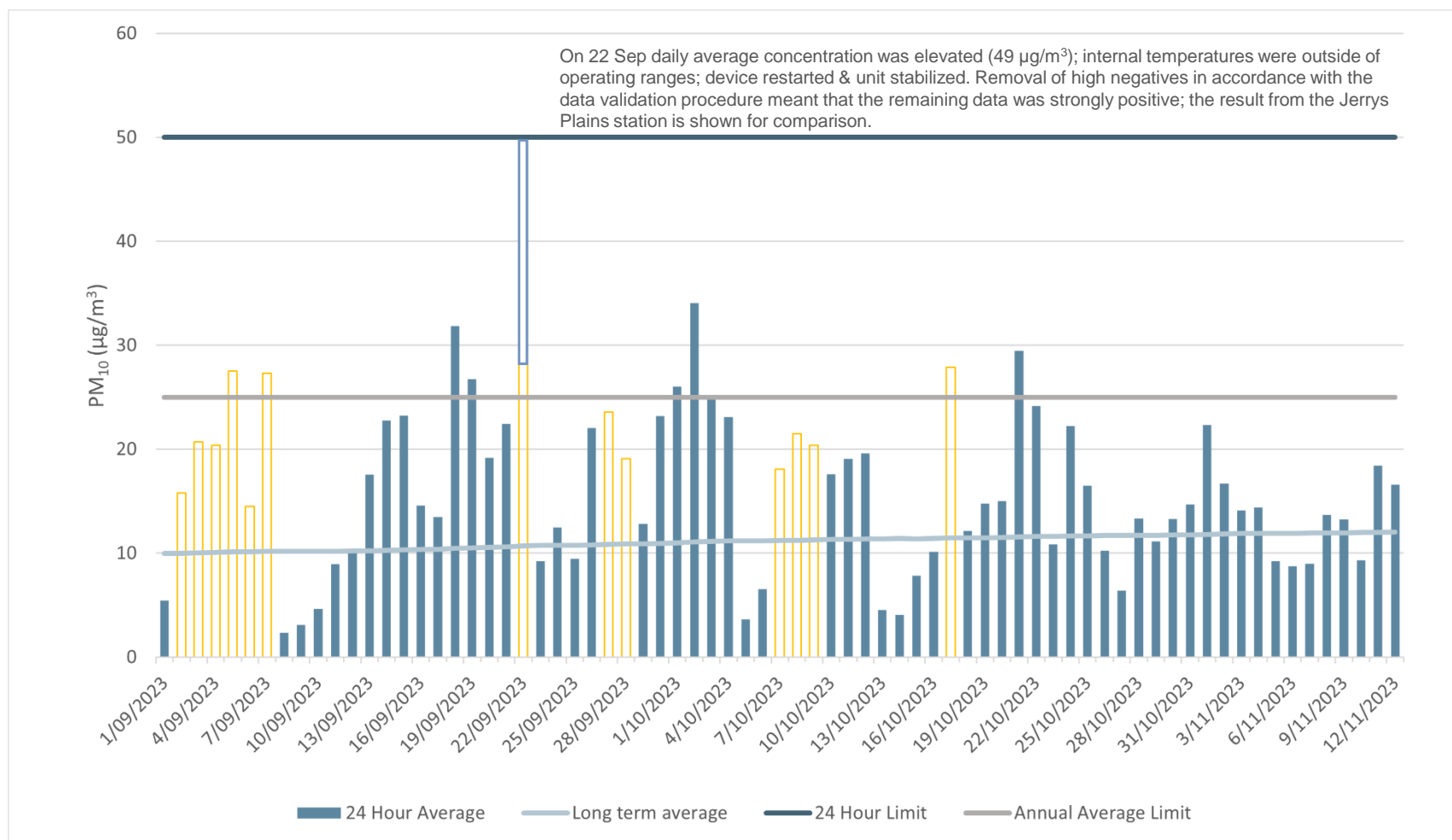
The graph shows 24-hour average and long term (rolling annual average) PM₁₀ concentrations recorded from 1 Sep to 00:00hrs 12 Nov 2023 as measured using a TEOM. All were significantly below the 24-hour and annual impact assessment criteria.

PM_{2.5} at TEOM-1 (Maxwell Infrastructure)



The graph shows 24-hour average and long term (rolling annual average) PM_{2.5} concentrations recorded from 1 Sep to 00:00hrs 12 Nov 2023 as measured using a TEOM. All were significantly below the 24-hour and annual impact assessment criteria.

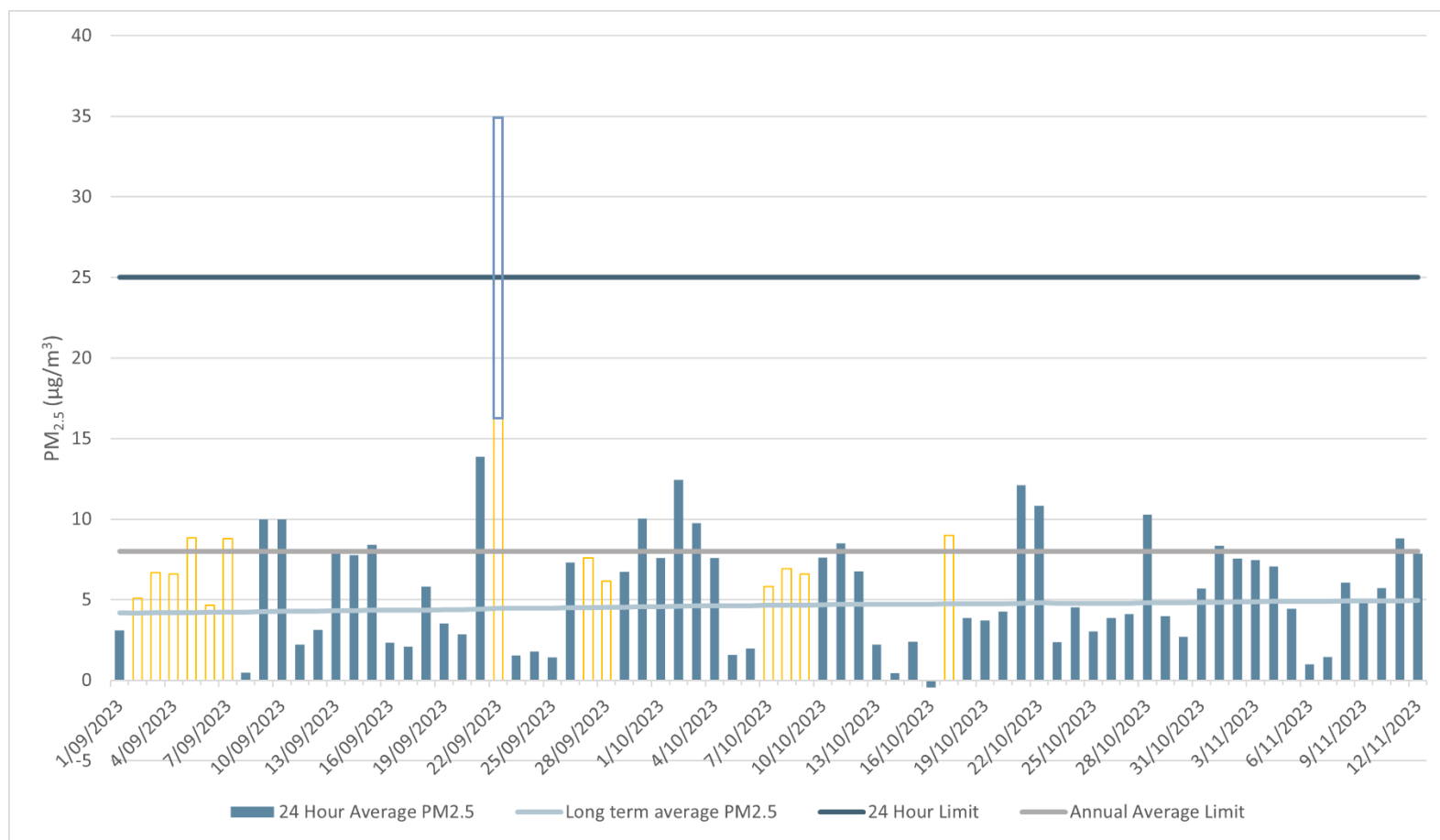
PM₁₀ at TEOM-2 (Plashett)



The graph shows 24-hour average and long term (rolling annual average) PM₁₀ concentrations recorded from 1 Sep–12 Nov 2023. All were significantly below the 24-hour and annual impact assessment criteria.

As requested during the CCC meeting of 13/9/23, due to power failures causing data gaps at TEOM-2, this slide has been updated to include data from the Jerrys Plains monitoring station, which is located 1.7km to the SSE of TEOM-2 and is judged representative of the air quality at TEOM-2. The data from the Jerrys Plains station is shown as the orange bars.

PM_{2.5} at TEOM-2 (Plashett)



The graph shows 24-hour average and long term (rolling annual average) PM_{2.5} concentrations recorded from 1 Sept–12 Nov 2023. All were significantly below the 24-hour and annual impact assessment criteria. Small negative values in the range are a function of the TEOM instrument at very low concentrations.

As for PM₁₀ at TEOM-2, the graph has been supplemented to include data from the Jerrys Plains monitoring station where data is unavailable due to equipment malfunction or scheduled maintenance (shown as the orange bars). PM_{2.5} is not measured at the Jerrys Plains monitor, hence the year-to-date ratio of PM₁₀ to PM_{2.5} from TEOM-1 has been applied to data from PM₁₀ data from TEOM-2 to derive PM_{2.5} at TEOM-2.

10. Community

Complaints

- No complaints received.

Community Update

- Open Door at the Singleton Neighbourhood Centre – provide support to those in need in the local community. Malabar gifted four new cooking pots and over \$200 worth of food and kitchen supplies for their pantry.
- Roohaven Wildlife Rescue – are a non-for-profit organisation that is run by a local Muswellbrook couple caring for injured native wildlife. Malabar donated \$2000 to assist with the costs of rehabilitation.



Community Update

- Martindale Public School – provided swimming packs for all students which included a swim bag, goggles, swim cap, bucket hat, sunscreen, drink bottle, bubbles and a skipping rope.
- Warrior Disability Services – we collect cans and bottles for them to collect and recycle. The money raised is used for end of year activity's, this year they are saving for a trip to the zoo. Total raised so far is \$678.90



11. Community Questions

Community Questions

- No questions received

13. General Business

Thank you



Edderton Solar Farm & BESS Project

Maxwell CCC Introductory Briefing

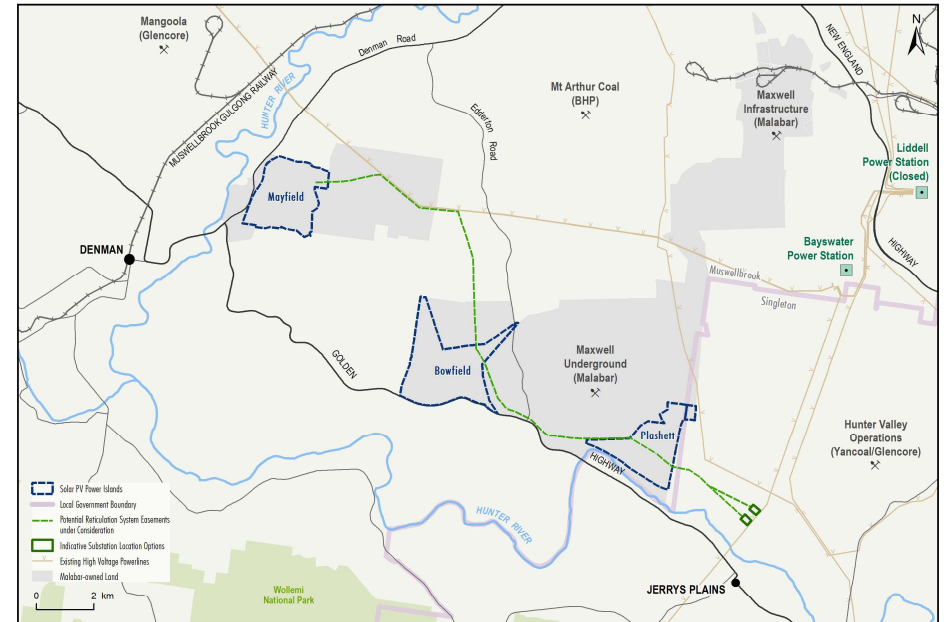
15 Nov 2023

Andy Winter
Hannah Coffey

Project Characteristics

- Voltere Pty Ltd
 - JV between EDFR and Malabar
- 350MW PV and 350MW/700MWh BESS
 - 3x distinct “power islands”
 - Access from Denman & Edderton Roads
 - ≈930ha of Malabar land
 - Concept informed by extensive constraints analysis and field surveys
 - No overlap with Maxwell Underground
 - Zoned RU1, Cat 1 and 2 NVR
- Connection to Transgrid 330kV transmission line.
 - Via arrangements with BHP, AGL and HVO
- State Significant Development
 - Assessed in accordance with DPE Large-scale Solar Energy Guidelines

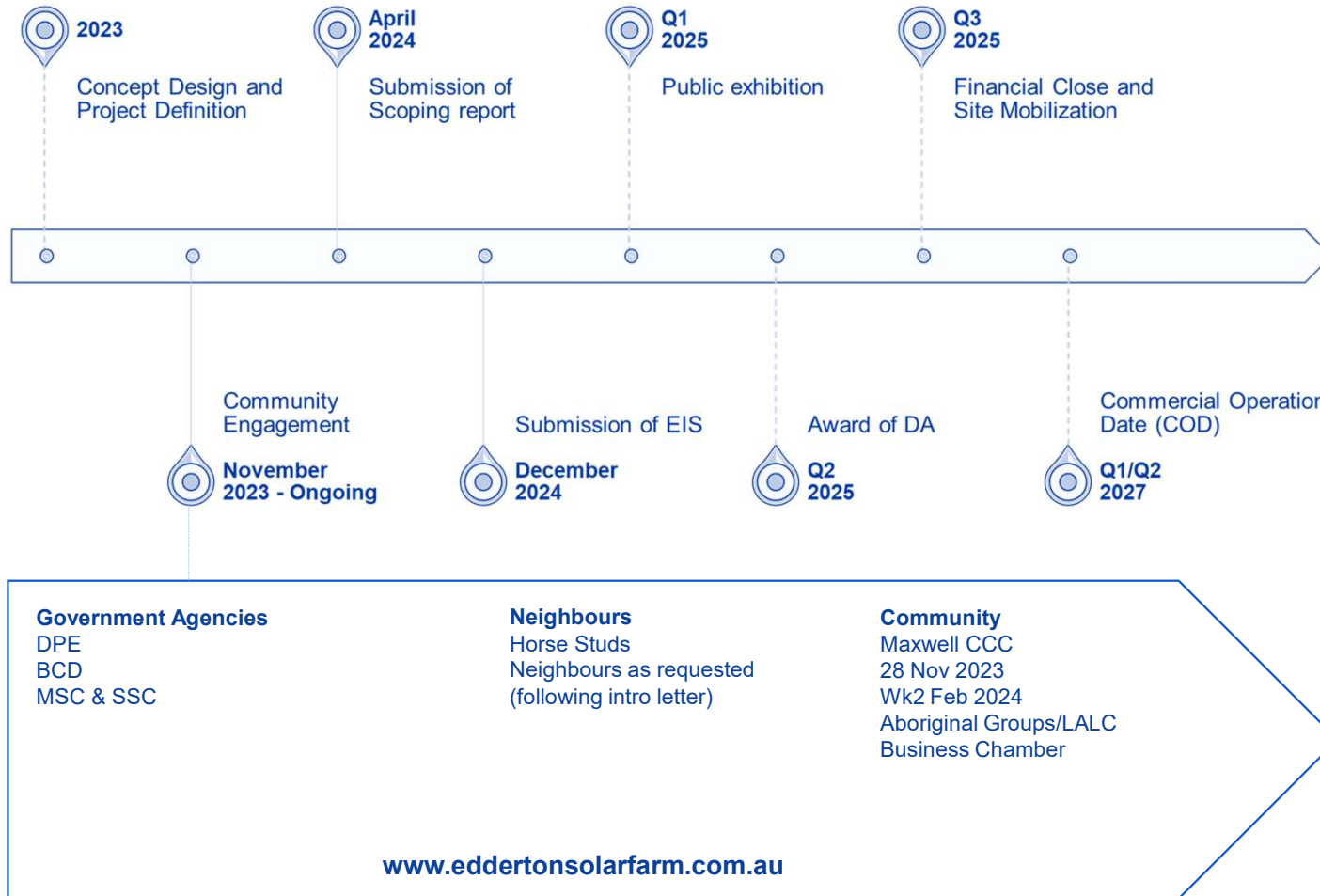
FOR CONSULTATION



EDF-23-01 GC_205A

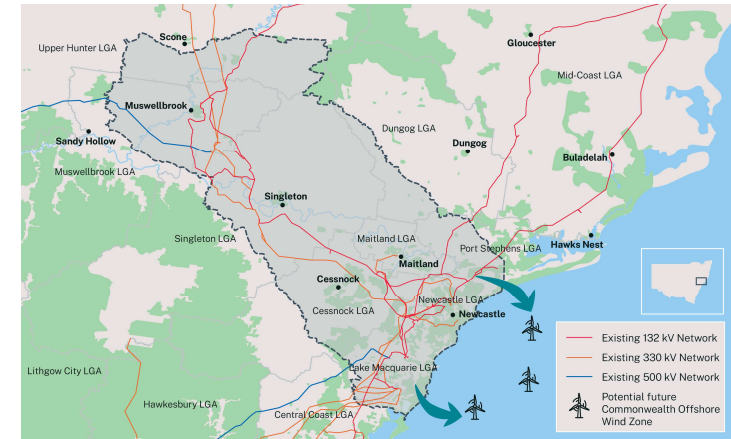


Planning Timelines



Project Benefits

- Strategic location:
 - Within Hunter-Central Coast REZ.
 - Proximate to robust transmission infrastructure & point of demand.
 - Co-located with mining and agriculture to maximise land-utilisation.
 - Maximise use of existing cleared areas (to avoid/minimise disturbance of woodland vegetation).
- Aligned to Energy Transition and NSW Electricity Infrastructure Roadmap
 - Solar Farm would produce up to 800,000 MWh per annum.
 - Power at least 130,000 homes (*Muswellbrook, Singleton, Upper Hunter and Newcastle LGAs*).
 - Offset approx. 675,000 tonnes CO2-e per annum.
 - Battery to “firm and sleeve” solar intermittency.
- Local Content
 - Diversified investment in the region, supporting transition from thermal coal.
 - Approx. 400-450 FTE construction jobs (turnkey construction contract).
 - Approx. 10-15 FTE operational roles (EDF-operated).
 - Commitment to local labour, services and suppliers.
- Aligned Objectives
 - Proponents with local knowledge of the area and the community.
 - Global reputation for developing and operating renewable energy projects.



EnergyCo



THANK YOU



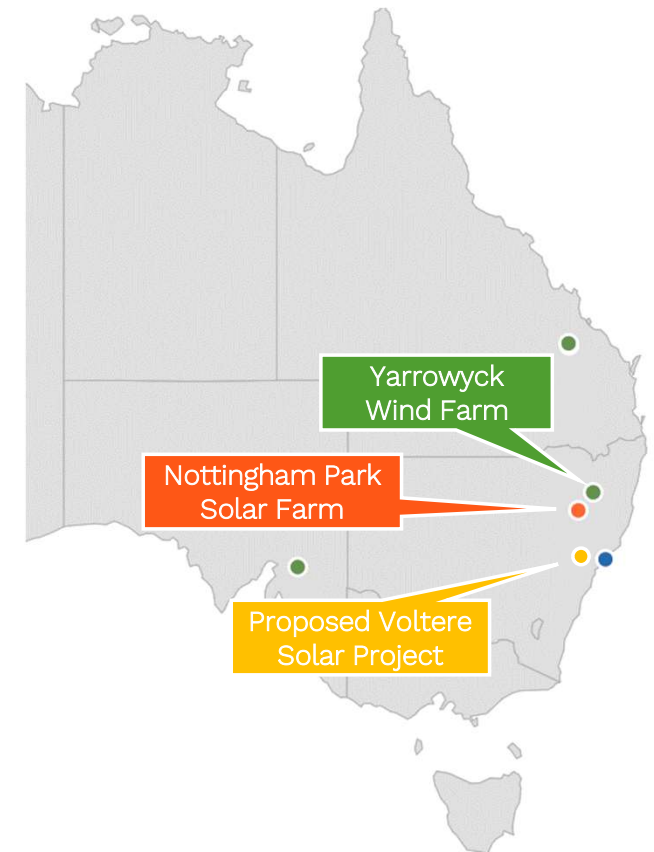


Appendix

About EDR Renewables

EDF Renewables Australia

- EDF Group:
 - Founded in France and involved in renewable energy industry for over 35 years.
 - One of the world's largest electricity producers, and one of the largest renewable energy producers in the World.
- EDF Renewables Australia (subsidiary of EDF Group):
 - Established in 2017.
 - Focuses on developing, financing, owning and operating wind, solar, battery storage and green hydrogen projects.
 - Mission - **Delivering renewable solutions to lead the transition to a sustainable energy future.**
 - 3,800 MW of Projects in development in Aus, 2,350 MW of which are in NSW.



- Onshore Wind Farm
- Solar Farm
- Offshore Wind Farm