



**Spur Hill Underground Coking Coal Project
Community Consultative Committee
Presentation**

3 October 2018

Agenda



1. Spur Hill Project Update
2. Drayton Open Cut Rehabilitation
3. Maxwell Underground Project
4. Maxwell Solar Project
5. Community
6. Complaints register



1. Spur Hill Project Update

Spur Hill Project Update



- A 2D short seismic program is planned for late October or early November of 2018 in the northern area of Exploration Licence (EL) 7429, on land owned by the company.
- This work is aimed at the identification and definition of sub-surface geological structures (e.g. faults and igneous intrusions).
- The seismic surveys will use a truck mounted vibration unit to generate controlled vibrations (seismic waves) as it progressively moves along the selected path. The reflected seismic waves will be recorded by surface geophones placed along the route and transmitted to recording vehicles via thin cables.
- The program will be conducted in accordance with the relevant approvals, including limiting noise disturbance on adjoining properties to required levels.



2. Drayton open cut rehabilitation

Drayton Site Rehabilitation

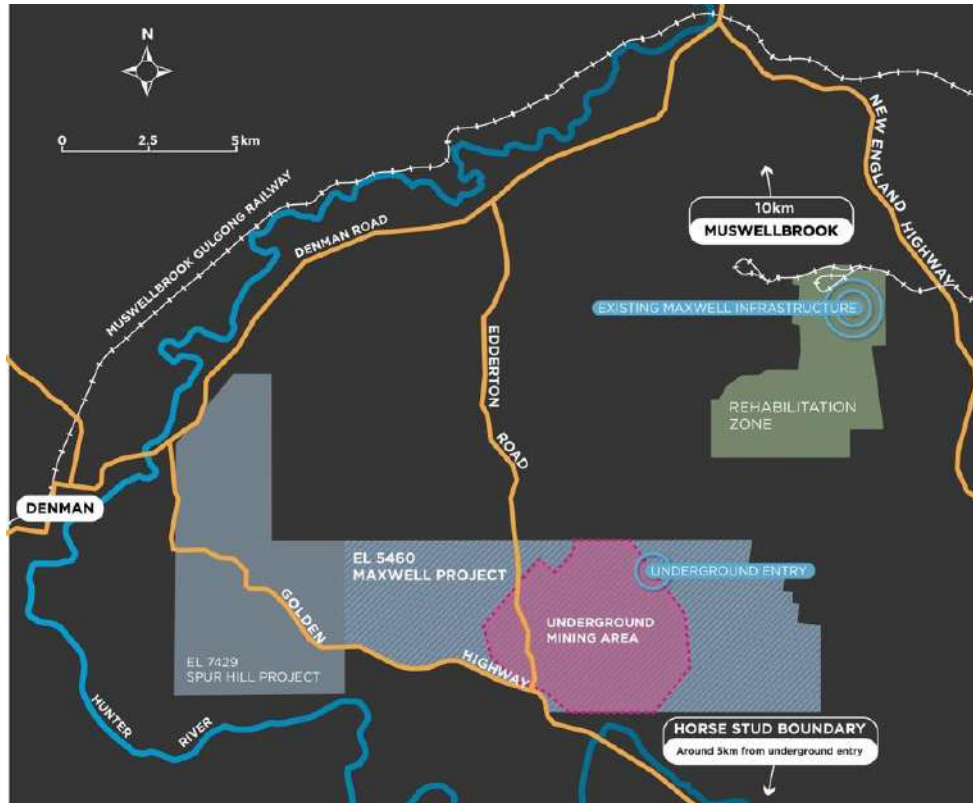


- As Malabar was keen to commence rehabilitation as quickly as possible, within a week of taking control of the Drayton Mine, we commenced rehabilitation.
- These initial efforts were accelerated with the appointment of a rehabilitation contractor, now more than 30 people on site.
- At September 2018 we have achieved;
 - 105 ha shaped
 - 52 ha seeded



3. The Maxwell Underground Project

Maxwell Underground Project



- We are planning on producing high quality coals with at least 75% of coal produced capable of being used in the steel manufacturing industry. The balance would be export thermal coals suitable for the new generation High Efficiency, Low Emission (HELE) power generators.
- Underground mining means significantly lower impacts than an open-cut mine.
- We have carefully placed the mine's entry for the underground project in a valley c.5 km north of the Golden Highway. This means it cannot be seen from the Highway or the local horse studs.

We believe this very different approach addresses concerns that were raised in relation to past proposals for the area.

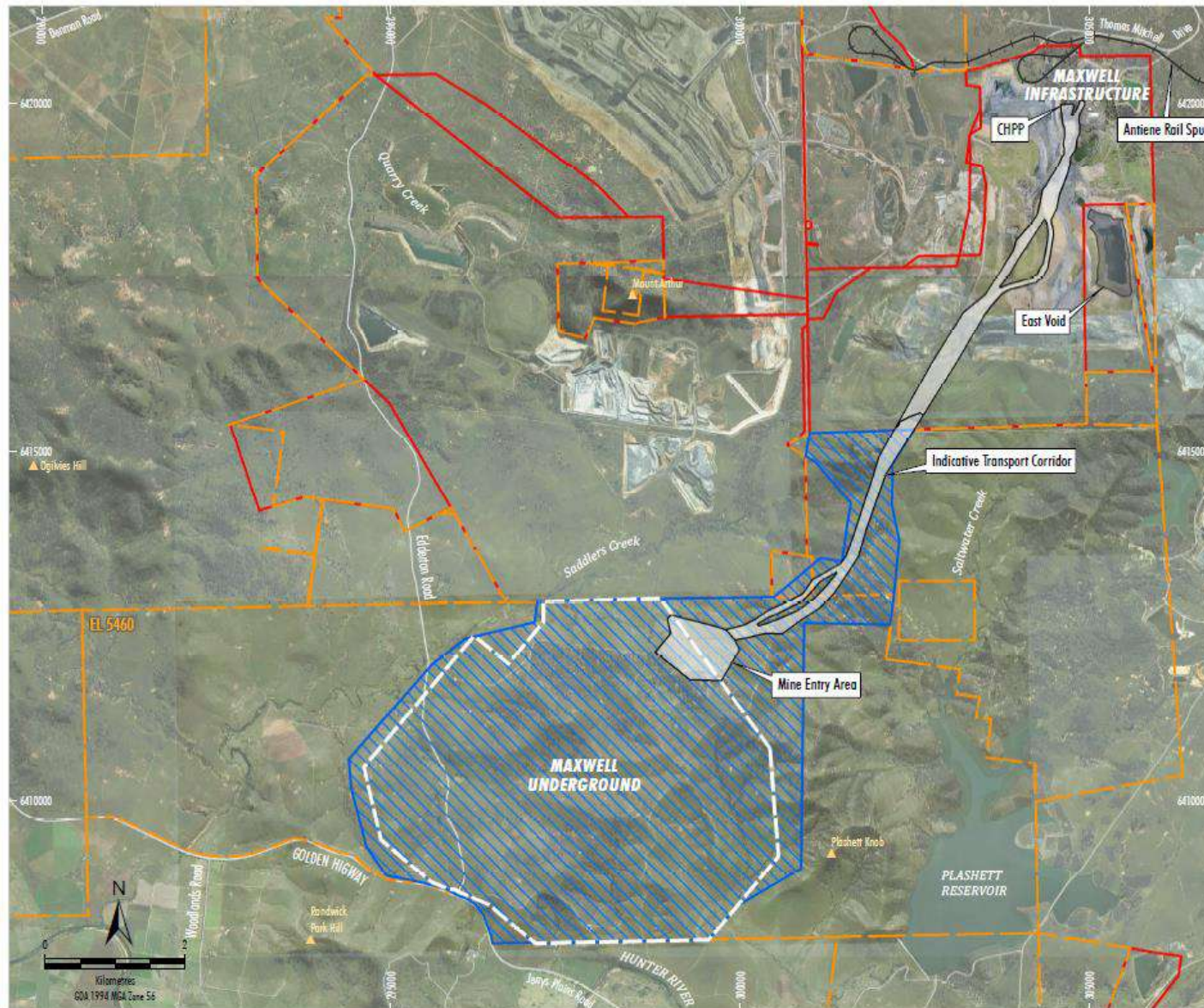
About the Project



Underground-only.....

- Up to 8Mtpa ROM and 7Mtpa of product coal.
- Applying for c.26 years of mining in current DA.
- Will utilise the substantial existing Maxwell infrastructure.
- Site access via existing Thomas Mitchell road
 - ✓ purposely constructed for access to mines.
- Limited new infrastructure at the underground entry.
- Freehold land within the application area is owned by Malabar, with the exception of a small area within the transport corridor, which is owned by AGL.
- Minimal impact to existing agricultural activities within the application area.
- Project will have minimal impact on ground or surface water resources.
- Project will have no direct or subsidence impacts on agricultural resources or any land used by Equine or Viticulture CIC's, nor the Golden Highway.

Project Boundary



- LEGEND**
- Exploration Licence Boundary
 - Mining and Coal Lease Boundary
 - Railway
 - Gateway Certificate Application Area
 - Indicative Underground Mining Area
 - Proposed Surface Development Area
 - CHPP Reject Emplacement Area

Source: © NSW Department of Finance, Services & Innovation (2017)
 Orthophoto: Oct 2016, 2011

MALABAR  COAL
MAXWELL PROJECT
 Project General Arrangement
 and Gateway Certificate Application Area

Figure 1-2

Planning for Underground Operations



For the Maxwell underground;

- Underground layouts drafted and coal production scheduled
- Conceptual layouts for; access, MIA, and coal transport completed
- Gateway subsidence modelling has been completed
- First stage groundwater modelling completed
- Soil studies completed
- Agricultural impact assessment completed
- Flora and Fauna studies are progressing across the seasons
- Other studies have been commissioned including;
 - Aquatic
 - Surface water
 - Geochemistry
 - Transport
 - Social impact

Maxwell Underground Schedule



Milestones

Malabar lodged Application for a Gateway Certificate to the Mining and Petroleum Gateway Panel



Malabar has requested SEARs from the NSW Department of Planning and Environment



**WE ARE
HERE**

Malabar has lodged a Referral under the Commonwealth EPBC Act



Malabar obtains Gateway Certificate from the Gateway Panel



Malabar seeks feedback from the community to inform the EIS



Malabar's EIS is prepared



NSW Department of Planning and Environment (DP&E) place Malabar's EIS on public display for about four weeks



Malabar responds to submissions



The DP&E assesses Malabar's submission, including any issues or concerns raised in the submission process



The DP&E or Independent Planning Commission (if applicable) announce its decision



Opportunities for feedback

Donna McLaughlin

Email: info@malabarcoal.com.au **Phone:** (02) 6542 0283

Web: www.malabarcoal.com.au

We will engage with the local community during the preparation of the EIS to ensure community feedback is gathered, considered in our future plans, and concerns are addressed.

The studies that support the EIS are prepared by recognised experts and include assessments of potential impacts on agriculture and agribusiness, water, biodiversity, heritage, air quality, amenity and the road network.

The EIS will be accompanied by a social impact assessment and an economic assessment.

The community has the opportunity to submit feedback directly to the DP&E.

Malabar will engage with the community to address any concerns raised.

In addition, Malabar must formally respond to any issues raised in submissions.

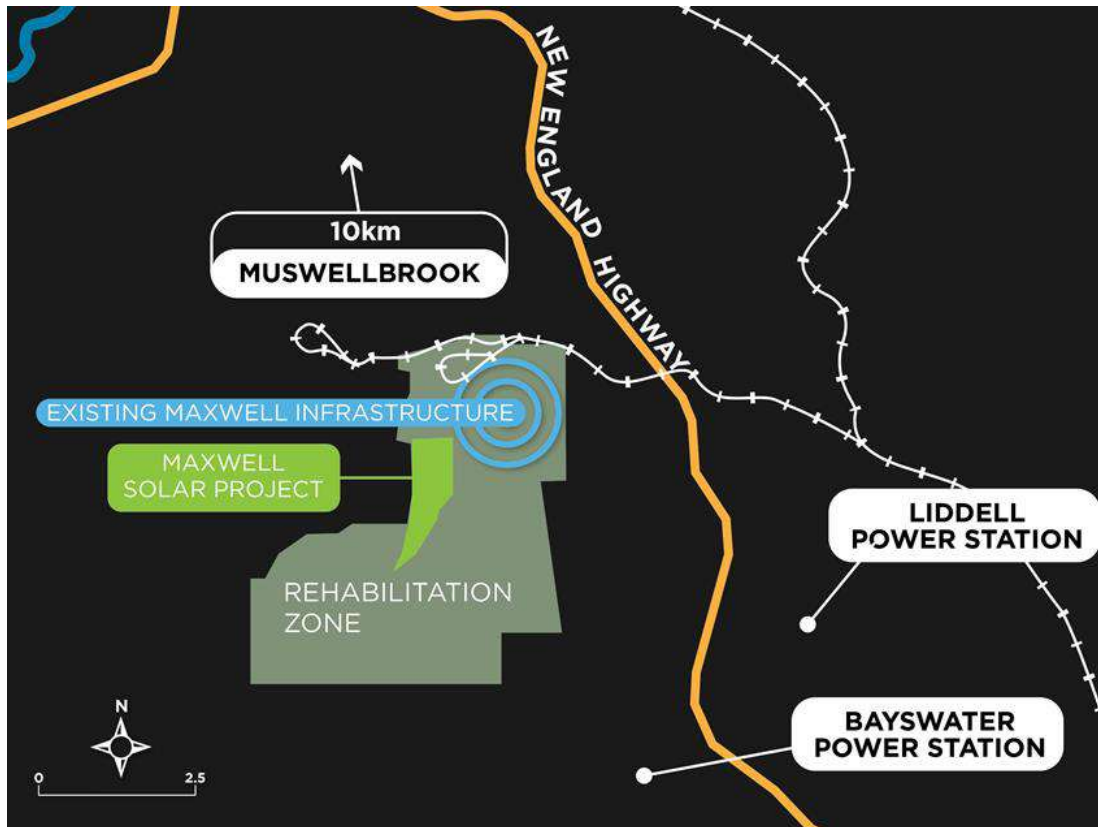
An approved application may include conditions that address any outstanding concerns raised by the community.

4. Maxwell Solar Project

Maxwell Solar Project



As a separate project Malabar intends to submit a development application for a solar farm, “Maxwell Solar Project”.



- Solar EV panels would be located on areas of previous open cut mining disturbance.
- Installed capacity of around 25 MW.
- Adjacent to the major electricity generating hub in NSW (Liddell and Bayswater Power Stations) and in proximity to high voltage power lines.
- The solar farm would generate enough energy to power about 10,000 local homes.
- As the project is a State Significant Development the DA will be submitted to NSW Department of Planning and Environment

Solar Approval Process



- Area has previously been mined so likely only minimal impacts with respect to:
 - Biodiversity
 - Heritage
 - Soil and Land capability
 - Visual
 - Transport
 - Noise
- Access via mine roads from Thomas Mitchell drive.
- Area is currently within Mining Lease CL229
- Rehabilitated to pasture with some immature trees



Next Steps

- Apply for SEARs



5. Community

Sponsorship



National Tree Day – 29th July

- As part of National Tree Day, Malabar Coal donated four plants and a magnolia tree to go into a garden bed out the front of Muswellbrook Public School.
- We also arranged for a few volunteers to go to the school and help the kids with the planting.



Sponsorship



Donating defib units - July

- One unit was donated to the Upper Hunter Riding for the Disabled
- One unit was donated to the Wanaruah Local Aboriginal Land Council



Benefits of the Maxwell Underground Project



350 
new, direct jobs and many more indirect jobs

\$55m 
per year in wages


Certainty that there will never be an open-cut mine within EL 5460

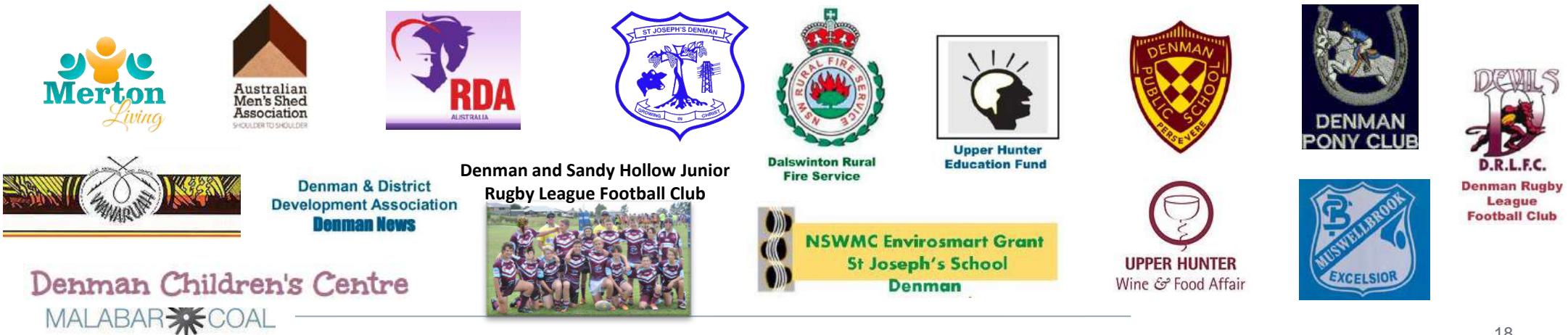

Better rehabilitation outcomes

\$700m 
per year in export income for NSW

\$1.3bn 
in royalties over initial 26 years

ON-GOING SUPPORT FOR LOCAL BUSINESSES

Community groups we have supported include:



The collage includes the following logos and names:

- Merton Living
- Australian Men's Shed Association
- RDA Australia
- St Joseph's Denman
- Dalswinton Rural Fire Service
- Upper Hunter Education Fund
- Denman Public School
- Denman Pony Club
- Devils D.R.L.F.C. Denman Rugby League Football Club
- Denman and Sandy Hollow Junior Rugby League Football Club
- NSWMC EnviroSMART Grant St Joseph's School Denman
- Upper Hunter Wine & Food Affair
- Muswellbrook Excelsior
- Denman Children's Centre MALABAR COAL
- Denman & District Development Association Denman News

6. Complaints Register

Complaints Register



- No complaints registered since previous CCC meeting.
- Total complaints for FY 2017-18: 0 complaints.

Abbreviations And Glossary



- CCC – Community Consultative Committee.
- DA – Development Application.
- DP&E – NSW Department of Planning and Environment.
- DRE – NSW Division of Resources and Energy (part of NSW Department of Industry).
- EARs – Environmental Assessment Requirements.
- EIS – Environmental Impact Statement.
- EL – Exploration Licence.
- EP&A Act – NSW *Environmental Planning and Assessment Act 1979*.
- EPBC Act – Commonwealth *Environment Protection and Biodiversity Conservation Act 1999*.
- MLA – Mining Lease Application.
- SHM – Spur Hill Management Pty Ltd.
- TEOM – an air quality monitoring device, Tapered Element Oscillating Microbalance.