



**Spur Hill Underground Coking Coal Project
Community Consultative Committee
Presentation**

22 May 2019

Agenda



1. Upper Hunter Mining Dialogue Update
2. Spur Hill Underground Coking Coal Project Update
3. Maxwell Infrastructure
4. Maxwell Project
5. Maxwell Project – Social Impact Assessment
6. Maxell Solar Project
7. Community
8. Complaints Register



1. Upper Hunter Mining Dialogue Update

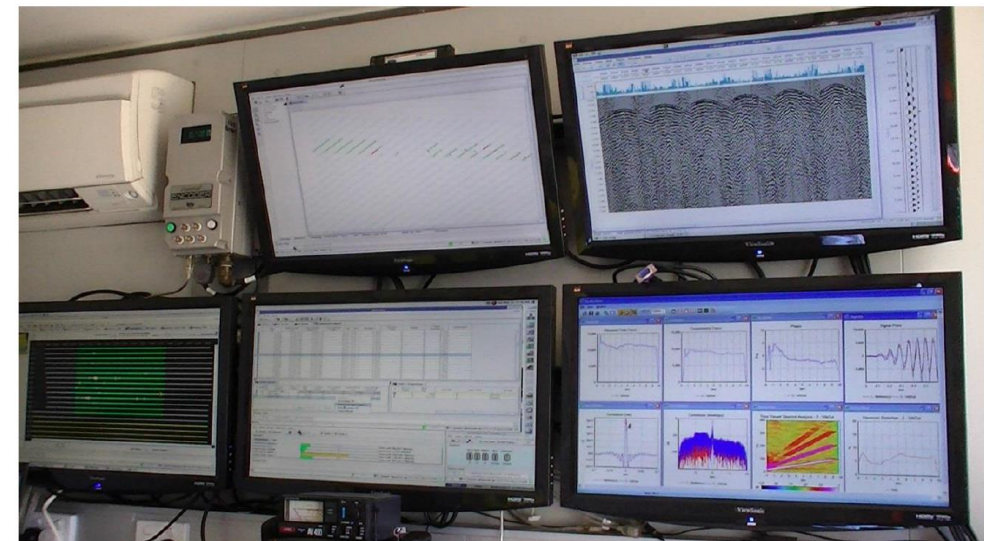
2. Spur Hill Coking Coal Project Update

Spur Hill Coking Coal Project seismic survey



Work aimed at the identification and definition of sub-surface geological structures (e.g. faults and igneous intrusions).

- The field component concluded late October 2018.
- Data collected is now being processed and interpreted. (A highly specialised task)



3. Maxwell Infrastructure

Maxwell Infrastructure Rehabilitation



- ✓ Shaping and placement of inert material continuing.
- ✓ Contour construction commenced.
- ✓ Completed 8ha of tree seeding.
- ✓ Tube stock planting of 15ha.
- ✓ 50 head of cattle in the rehabilitation paddock (weighing approximately 450kg)



Maxwell Infrastructure Rehabilitation



Developing post-mine landforms that mitigate erosion potential:

- ✓ Incorporating natural landscapes into landform design rather than engineered structures
- ✓ Reshaping areas to integrate seamlessly with adjacent landforms
- ✓ Creating undulating landforms over predominately flatter areas
- ✓ Redesigning drainage structures to appear less intrusive
- ✓ Establishing gentle slope gradients (to a maximum of 18 degrees)
- ✓ Using suitable capping material (where required) that consists of inert clay material.
- ✓ Optimisation of equipment and methodology to place ameliorants and seed in undulating topography



Water Discharge Incident



- On the 29 October 2018, mine water being pumped to a dam (for stock water) overflowed the dam via the spillway and left the premises boundary.
- The quality of the water was previously tested and determined to be of reasonable quality for stock water.
- Surface water samples were collected.
- The incident was reported to DPE.
- Malabar has put the following controls in place:
 - A comprehensive written permit to undertake filling of a dam
 - Monitoring of water levels before, during and on completion of filling
 - Set timed reminders in place when filling the dam
 - Investigating the installation of electrical timers

4. The Maxwell Project

Maxwell Underground Project EIS preparation



- We are planning on producing high quality coals with the at least 75% of coal produced capable of being used in the steel manufacturing industry. The balance would be export thermal coals suitable for the new generation High Efficiency, Low Emission (HELE) power generators.
- Underground layouts drafted and coal production scheduled.
- Layouts for underground access, infrastructure, and coal transport completed.
- Specialist studies underway for preparing the EIS;
 - Aboriginal heritage
 - Agricultural impact
 - Air quality
 - Economic
 - Existing Land contamination
 - Flora and Fauna
 - Geochemistry
 - Geomorphology
 - GHG
 - Groundwater modelling
 - Health risk assessment
 - Historic heritage
 - Landscape and visual
 - Noise
 - Social impact
 - Soil studies
 - Subsidence modelling
 - Surface water
 - Transport

Maxwell Underground Project progress



Milestones

Malabar takes ownership of Maxwell Infrastructure and the Maxwell Project

Malabar begins rehabilitation and commences technical and environmental studies to support the Gateway application

Malabar lodged a Referral under the Commonwealth EPBC Act

Malabar obtains Gateway Certificate from the Mining and Petroleum Gateway Panel

**WE ARE
HERE**

Malabar seeks feedback from the community to inform the assessment requirements for the EIS

Malabar's EIS is prepared

NSW Department of Planning and Environment (DP&E) place Malabar's EIS on public display for around four weeks

Malabar responds to submissions

The DP&E assesses Malabar's submission, including any issues or concerns raised in the submission process

The DP&E or Independent Planning Commission (if applicable) announce its decision

Opportunities for feedback



Community feedback was considered in the development of our Scoping Report in support of a Request for Secretary's Environmental Assessment Requirements ("SEARs").



We will engage with the local community during the preparation of the Environmental Impact statement (EIS) to ensure community feedback is gathered, considered in our future plans, and concerns are addressed.



The studies that support the EIS are being prepared by recognised experts and include assessments of potential impacts on agriculture and agribusiness, water, biodiversity, heritage, air quality, amenity and the road network.



The EIS will be accompanied by a social impact assessment and an economic assessment.



The community has the opportunity to submit feedback directly to the DP&E.



Malabar will engage with the community to address any concerns raised.



In addition, Malabar must formally respond to any issues raised in submissions.



An approved application may include conditions that address any outstanding concerns raised by the community.

5. Maxwell Project - Social Impact Assessment



MAXWELL PROJECT SOCIAL IMPACT ASSESSMENT

CCC Meeting May 2019



SIA Study Area

- Landholdings in the vicinity of the Project – homes, agricultural properties, wineries, horse studs
- Nearest communities - Jerrys Plains, Denman, Muswellbrook
 - *Potential for employment and population increases in other communities such as Singleton and Scone also considered*
- Project region - Muswellbrook and Singleton LGAs
- Hunter Valley Region (SA4) as relevant to employment

Project benefits

- Up to 250 construction jobs, with an average of 90 FTE personnel over the three year construction period
- An average of 350 jobs during the first ten years
 - *opportunities for indigenous people, women and people who are new to the underground coal mining industry*
- Contributions to local and regional amenity due to population increases and associated economic stimulus, with flow-on jobs also created
- Contributions to local agriculture and agricultural suppliers, as Malabar is improving its agricultural properties and viticultural operations
- Support for community objectives including improved health and wellbeing, economic diversity, and the integration of renewable energy production
- Community investment through:
 - *arrangements with Muswellbrook Shire Council*
 - *Malabar's Sponsorship and Donations*
- Direct supply opportunities for businesses based in the Project region and adjoining LGA
- Payment of rates, royalties and taxes

Project impacts

- Potential for anxiety or stress among individual neighbouring landholders regarding property-specific or more general environmental impacts
 - *to be identified through regular engagement and addressed through ongoing and adaptive management strategies*
- Potential for ongoing reservation or opposing community views about the Project's interaction with equine and viticulture operations, or perceived conflict with regional economic transition goals
 - *to be addressed by Malabar's commitment to improve the sustainability and quality of its agricultural and viticultural assets, and renewable energy production*
- Cumulative impacts on housing affordability, social infrastructure capacity, local labour and skill shortages
 - *to be addressed through cumulative impact monitoring with local and state agencies and other nearby operations*
- Minor changes to traffic conditions on Thomas Mitchell Drive and Edderton Road
- Small incremental increases in demand for services including GPs, hospitals, police and emergency services, childcare, education and training, Council services and facilities
 - *within the limits of projected population growth for the Project region*
 - *offset by Malabar's community investments*
- Increased demand (including potential cumulative demands) for rental housing

Mitigation and enhancement - key strategies

■ Stakeholder Engagement and Relationships

- *provision of adequate, timely information about the Project, expected impacts and associated management and monitoring strategies*
- *dedicated personnel and an engagement program which builds long-term stakeholder relationships*

■ Neighbour Amenity

- *developing good neighbour relations based on regular, transparent and responsive engagement*
- *minimising amenity impacts at neighbouring properties*

■ Community Infrastructure and Wellbeing

- *managing Project-related demand on services and facilities, and assisting social infrastructure and service planning with accurate data*
- *agreements with key service providers*
- *supporting local initiatives that contribute to workforce and community wellbeing*

■ Housing and Workforce Management

- *maximising local employment including Indigenous people, women, young people and locals previously unskilled in mining*
- *monitoring numbers of personnel moving to the Muswellbrook and Singleton LGAs and advising Councils of anticipated workforce numbers*
- *encouraging non-local operational personnel and their families to settle locally*

■ Local Business

- *enabling local business businesses and suppliers to participate in Project procurement opportunities*
- *supporting initiatives and service industries that promote liveability, workforce settlement and associated economic growth*

Feedback

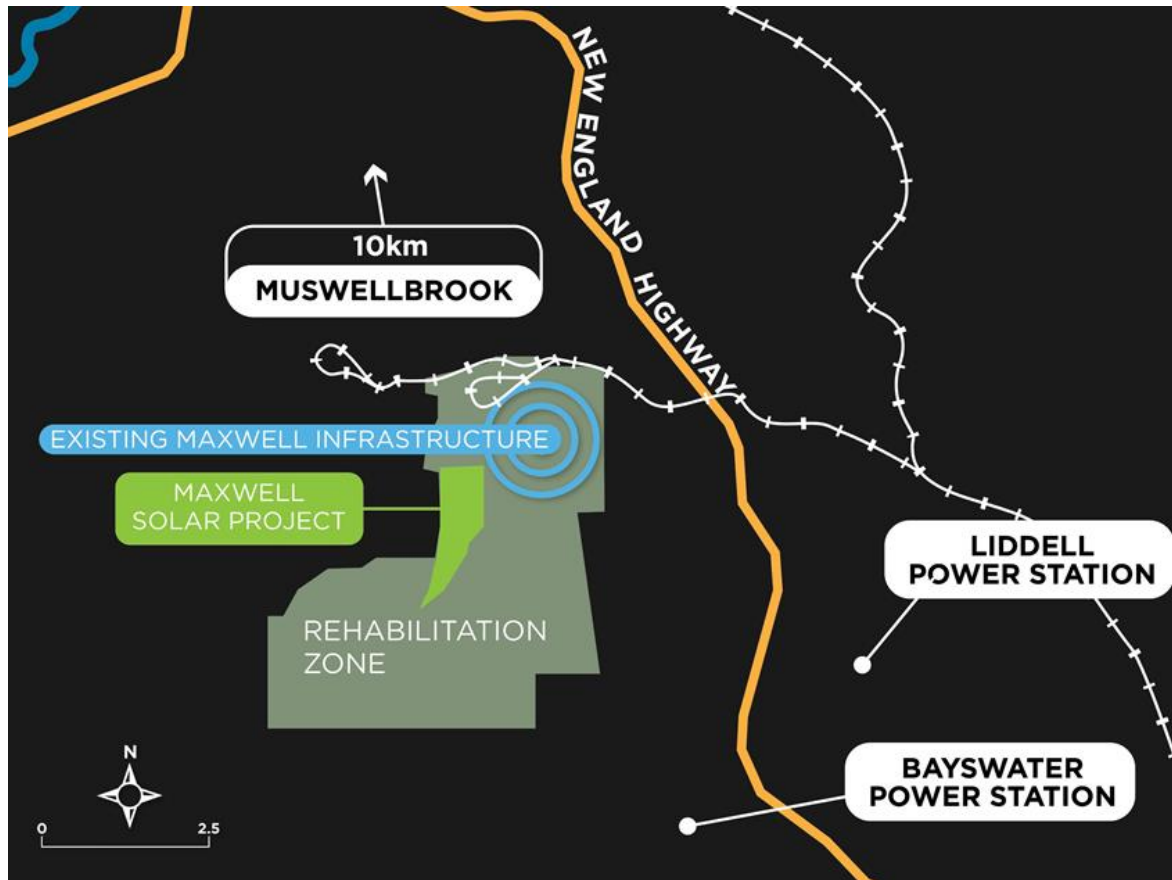
- Your feedback on the SIA findings is welcome
- Questions to consider:
 - *Do the findings reflect your understanding of the Maxwell Project's potential impacts and opportunities?*
 - *Do the mitigation strategies satisfactorily address potential social impacts and maximise Project opportunities?*
- Please email Dee, who will call you to discuss
 - [Dee Elliott, Director, Elliott Whiteing](#)
 - [Email: Dee@elliottwhiteing.com.au](mailto:Dee@elliottwhiteing.com.au)

6. Maxwell Solar Project

THE MAXWELL SOLAR PROJECT



Malabar will submit a separate DA for the “Maxwell Solar Project”



- Solar PV panels would be located on areas of previous open cut mining disturbance.
- Installed capacity of c.25 MW.
- Adjacent to the major electricity generating hub in NSW (Liddell and Bayswater Power Stations) and in proximity to high voltage power lines.
- The solar farm would generate enough energy to power about 10,000 local homes.

SEARs issued March 2019

7. Community

Upper Hunter Show



- Continued to support the Upper Hunter Show as a blue ribbon sponsor.
- This year we are sponsored the 3 main beef cattle classes which included:
 - Interbred Grand Champion Bull
 - Interbred Grand Champion Female
 - Supreme Champion Beef Exhibit

Denman Cricket Presentation



- This was the first year of a two-year sponsorship for Malabar and the Denman Junior Cricket Club.



Upper Hunter Education Fund

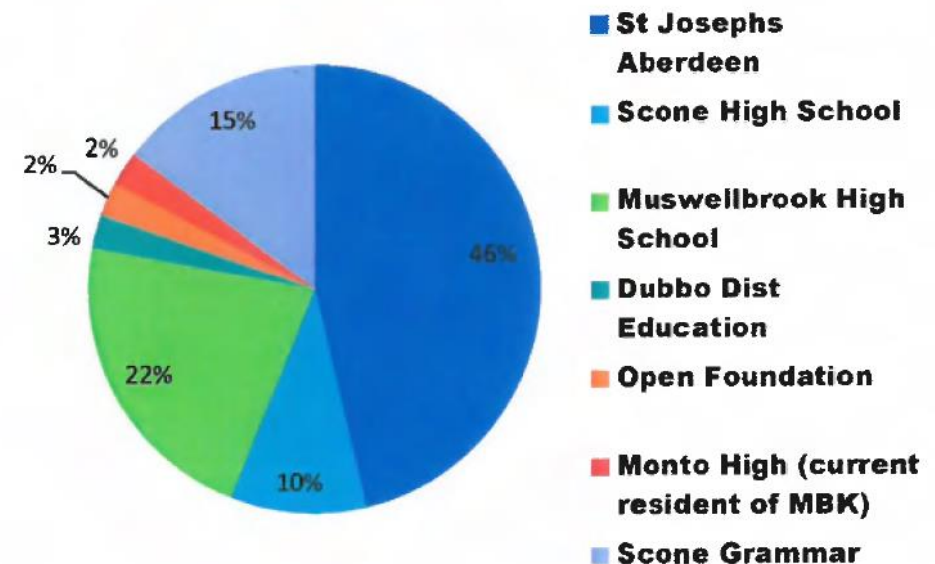


- Continued to sponsor the Upper Hunter Education Fund, providing financial support for tertiary education for local students.



SCHOOL OF ORIGIN 2019 RECIPIENTS

SCHOOL ATTENDED	NO OF STUDENTS
St Josephs Aberdeen	19
Scone High School	4
Muswellbrook High School	9
Dubbo Dist Education	1
Open Foundation	1
Monto High (current resident of MBK)	1
Scone Grammar	6



St Heliers Heavy Horse Field Days



- Malabar purchased a new PA system for the field days.
- Malabar were the main sponsor for feature events ‘working farm implements’ and ‘pumpkin snatch’.
- Malabar’s marque set up at the event to answer questions from the community.

8. Complaints Register

Complaints Register



- One enquiry on 15 March 2019, following the media release on the water discharge incident that occurred at the Maxwell Infrastructure site. Concern was that the Spur Hill CCC were not given the opportunity to ask questions and provide input. Malabar confirmed that the incident had been discussed with the Maxwell Infrastructure CCC.
- No complaints registered since previous CCC meeting.
- Total complaints for 2019: 0 complaints.

Abbreviations and Glossary



- 2D – two dimensional
- CCC – Community Consultative Committee.
- DA – Development Application.
- DP&E – NSW Department of Planning and Environment.
- DRE – NSW Division of Resources and Energy (part of NSW Department of Industry).
- EARs – Environmental Assessment Requirements.
- EIS – Environmental Impact Statement.
- EL – Exploration Licence.
- EP&A Act – NSW *Environmental Planning and Assessment Act 1979*.
- EPBC Act – Commonwealth *Environment Protection and Biodiversity Conservation Act 1999*.
- MLA – Mining Lease Application.
- SEAR's – Secretary's (DP&E) Environmental Assessment Requirements
- SHM – Spur Hill Management Pty Ltd.
- TEOM – an air quality monitoring device, Tapered Element Oscillating Microbalance.