
MAXWELL and MT ARTHUR COAL

Joint Community Consultative Committee

**Minutes of the Meeting held via Zoom* and at the Maxwell Infrastructure Meeting Room,
Muswellbrook, on**

7th December 2022 at 9:30am

Attendance:

Chairperson

Dr. W.E.J Paradise AM (WP) MAC Independent Chairperson

Maxwell

Lisa Andrews Maxwell Independent Chairperson
Michael White (MW) Representative for Coolmore/Godolphin
Jennifer Lecky (JL) Community Representative
Jason Parsons (JP) Environment and Community Coordinator
Donna McLaughlin (DM) Health, Safety, Environment and Community Manager
James Johnson (JJ) General Manager Development and Operations
Alex Newton (AN) Environment and Approvals Coordinator

Mt Arthur Coal (MAC)

Amanda Walker (AW) * Manager Corporate Affairs NSW
Chloe Christensen (CC) * Specialist Environment
Lavinia Hutchison (LH) * Community Representative

Other

Kerri Garvie (KG) * Independent Minute taker

1. Housekeeping and Safety:

The Meeting was opened at 9:35am by the Chair. Emergency procedures explained. Layout for refreshments and toilets clarified. Everyone thanked for signing in.

2. Welcome- attendees and apologies:

Chair acknowledged Co-Independent Chair LA and Independent Minute taker KG, welcomed all members and apologies for Rob Hayes.

3. Declaration of Pecuniary Interest:

WP advised the Chairs are paid. MW advised he is attending as a Representative of the horse studs, being paid as a consultant.

4. Acceptances of Previous Meeting Minutes:

The previous meeting's minutes were distributed to members for review with WP & JL confirming the minutes were accurate.

5. Actions from Previous Meeting

None.

6. Rail Movements:

June 2022 to end of November 2022

The Maxwell annual limit is 7 Mtpa total coal tonnes, but none has been moved as not actually mining for coal yet. Had a maximum of 1 train movement per day during the reporting period, relative to the approved annual limit of 12. These trains are related to the storage of empty rail stock on the rail loop by Aurizon.

The MAC limit is 27 Mtpa; the actual amount of coal moved 6.3 Mt during the reporting period. Train limit is 30 per day, actual train movement averaged 8.8 per day.

	Total coal tonnes	Maximum train movements per day (2 per physical train)
Maxwell Annual Limits	7 Mtpa	12
Mt Arthur Coal Annual Limits	27 Mtpa	30
Maxwell Actual	0.0 Mt	1
Mt Arthur Coal Actual	6.3 Mt	Max: 18 Average: 8.8

Source: JCCC December 2022 presentation – slide reference 3

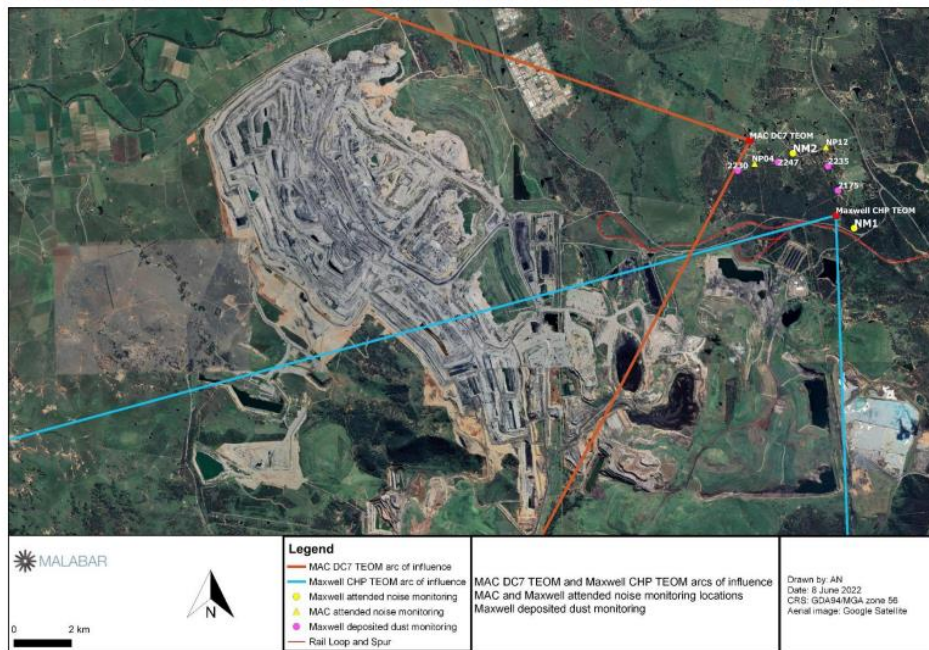
7. Complaints:

No rail complaints were registered for either Maxwell or MAC for the reporting period of June 2022 to November 2022.

8. Environmental Performance:

AN presented slide 5 showing the location of air quality and attended and automated noise monitoring sites relating to MAC and Maxwell, and the Maxwell deposited dust monitoring locations.

Location of Air Quality and Attended Noise Monitoring Sites



Source: JCCC December 2022 presentation - Slide Reference #5

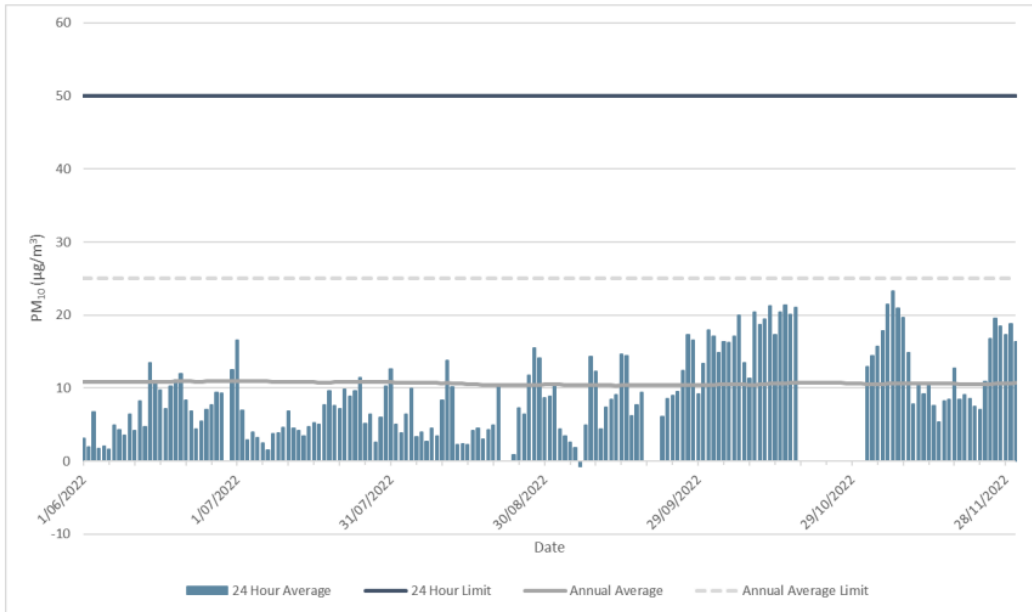
AN presented slides 6 and 7 which were for the results of the monitoring of PM_{10} and $PM_{2.5}$ respectively. It was explained that gaps in both datasets are due to maintenance and scheduled calibration by the monitoring contractor and some power cuts and equipment failure. The first, at the end of June, was a suspected power cut which resulted in some missing data for that day. The gap between 22nd and 23rd August was a result of the annual scheduled calibration, resulting in less than necessary data capture to calculate the daily average. Another 3 days of missing data occurred as a result of equipment locking up at the end of September, which required a restart. An extended data gap occurred mid to late October as a result of an unrecoverable error developing with the equipment, which also required a restart.

Discussion - MW asked if regulators will have questions about the data gaps. AN states that this will be reported at the end of year via the Environment Protection Licence Annual Return and also via the Annual Review for the Department of Planning and Environment. It is possible further investigation will be requested, or measures to address it. In the instance of mid to late October, the monitoring contractor managed to restart the equipment.

Discussion - MW asked how there can be negative data point readings? AN explained that this is a known function of the TEOM, during periods of high humidity, for example after rain or in the early hours of the morning due to dew, whereby the water vapour settles on the microbalance. There is a data validation procedure that requires there be no deletion of this type of data.

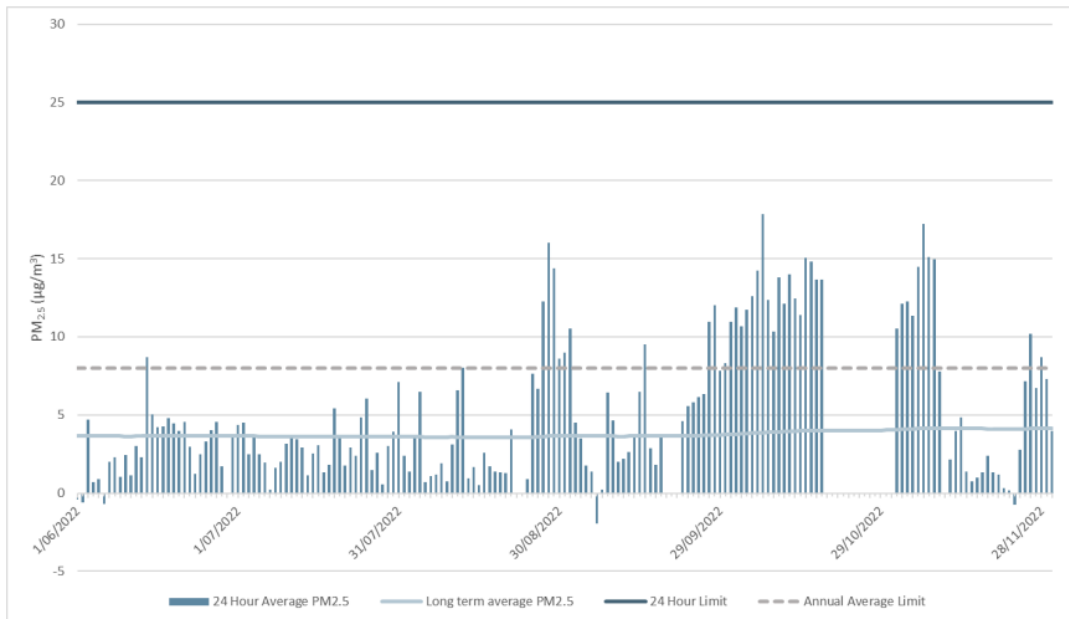
AN states all recorded numbers are very low in relation to any criteria for the protection of human health both for the 24-hour and annual averages.

PM₁₀ Real Time Monitoring (Maxwell)



Source: Malabar JCCC December 2022 presentation- Slide Reference #6

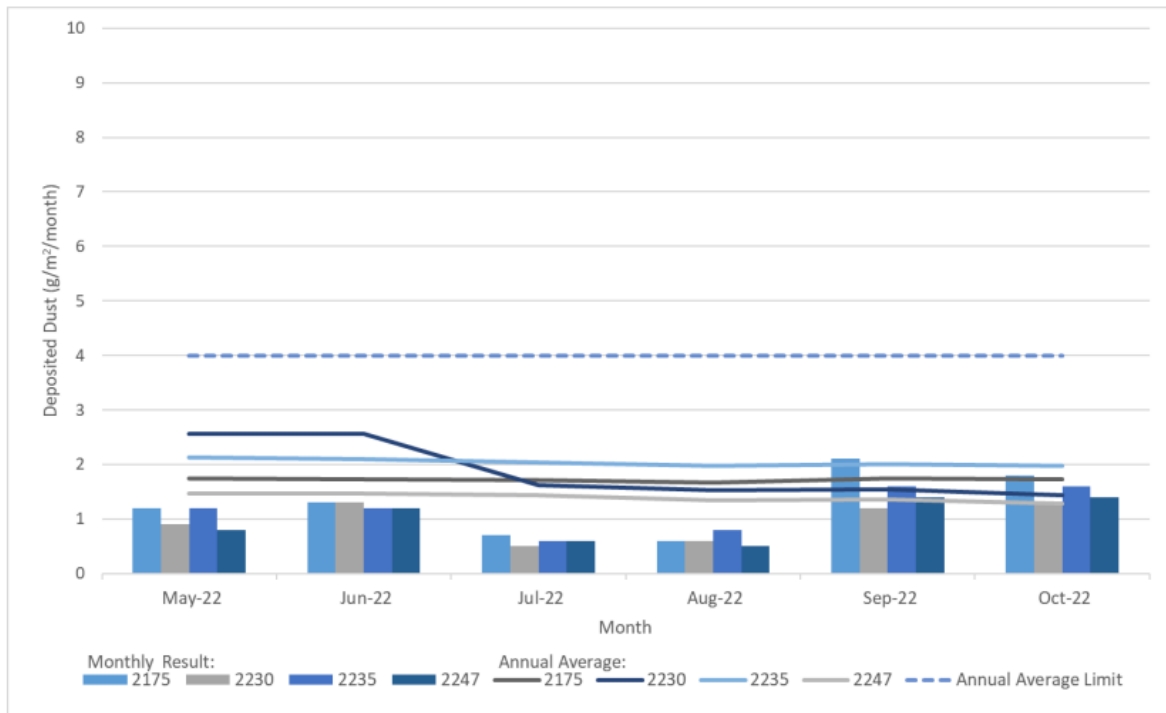
PM_{2.5} Real Time Monitoring (Maxwell)



Source: Malabar JCCC December 2022 presentation- Slide Reference #7

AN discussed the graph presented via Slide 8 showing deposited dust monitoring results, at four locations on the other side of Thomas Mitchell Drive. All recorded levels were very low relative to impact criteria.

Deposited Dust (Maxwell)



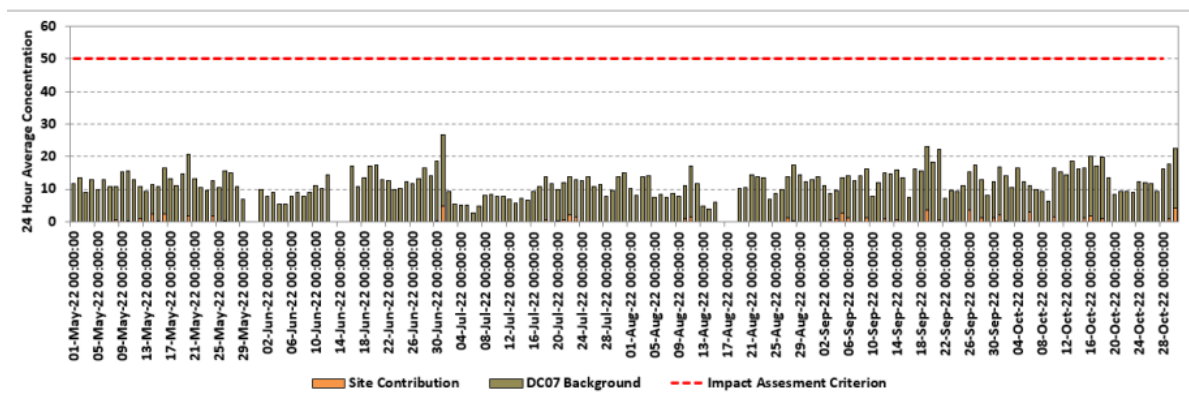
Source: Malabar JCCC December 2022 presentation- Slide Reference #8

CC discussed the graph presented via Slide 9 and explained that all recorded PM₁₀ concentrations were significantly below the 24-hour impact criteria and that data gaps were due to scheduled maintenance or power outages.

CC discussed the graph presented via Slide 10 which shows that short term (hourly) peaks in PM₁₀ concentrations occurred predominantly when the wind direction is from locations other than MAC.

PM₁₀ Antiene (Mt Arthur Coal)

Antiene (DC07) PM10 01/05/2022 – 31/10/2022

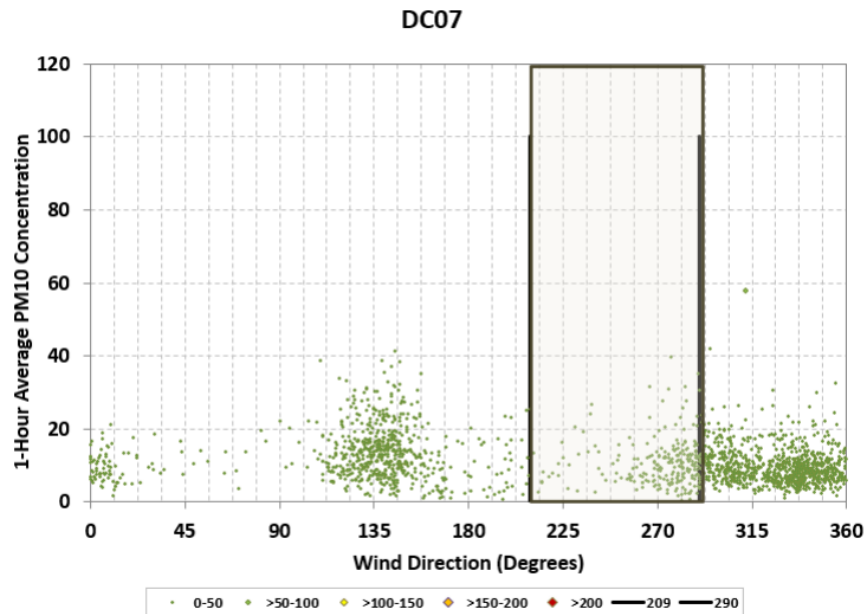


- Mt Arthur Coal had no exceedances of the impact assessment criteria during the reporting period at DC07.
- For the period of 01/05/2022 – 31/10/2022 – 96% data was captured. Please see table below outlining equipment issues experienced during the period.

30/05/2022 & 31/05/2022; 13/06/2022 to 15/06/2022. 16/08/2022 to 18/08/2022.	During the period listed <75% data captured due to power or equipment connectivity issues.
--	--

Source: Malabar JCCC December 2022 presentation- Slide Reference #9

PM₁₀ Antiene (Mt Arthur Coal)



Source: Malabar JCCC December 2022 presentation- Slide Reference #10

AN discussed the table presented via Slide 11 and explained that the data is taken from the two attended noise monitoring sites where Consultants are positioned with a noise monitor, day, evening and night, for three consecutive days each month, as required by the Maxwell Environment Protection Licence. All levels from the Maxwell site were undetectable and hence below any assessment criteria.

Attended Noise Monitoring (Maxwell)

Location	Month	L _{Aeq} (15 min)						L _{A1} (1 min)	
		Day Criteria	Noise Level	Evening Criteria	Noise Level	Night Criteria	Noise Level	Night Criteria	Noise Level
NM1	June to November 2022	45	<20	41	<20	41	<20	52	<20
NM2		44	<20	40	<20	40	<20	52	<20

Source: Malabar JCCC December 2022 presentation- Slide Reference #11

CC advised that there were no exceedances of the noise impact assessment criteria for MAC as shown via the Table presented as Slide 12.

Attended Noise Monitoring NP4 (Mt Arthur Coal)

Periodic noise monitoring results L_{Aeq} (15min)		Periodic noise monitoring results L_{A1} (1min)	
L_{Aeq} (15min)	NP04	L_{A1} (1min)	NP04
Representative residential assessment zone	A	Representative residential assessment zone	A
Noise impact assessment criteria (intrusive criteria) (L_{Aeq} (15min))	38	Noise impact assessment criteria (L_{A1} (1min))	45
Land acquisition criteria (L_{Aeq} (15min))	43		
Predicted noise level for 2022 for each monitoring location	38		
19/05/2022 23:25	IA	19/05/2022 23:25	IA
22/06/2022 22:34	38*	22/06/2022 22:34	42*
25/07/2022 23:28	29*	25/07/2022 23:28	30*
10/08/2022 00:20	IA	10/08/2022 00:20	IA
08/09/2022 00:15	25	08/09/2022 00:15	<30
18/10/2022 00:23	IA	18/10/2022 00:23	IA
IA = Inaudible.		IA = Inaudible.	
* Criteria does not apply due to atmospheric conditions		* Criteria does not apply due to atmospheric conditions	

- There were no exceedances of the noise criteria in this reporting period.

Source: Malabar JCCC December 2022 presentation- Slide Reference #12

Discussion - WP requested that Malabar provided further detail on the extended outage for the TEOM and any actions put in place; Action: Malabar agreed to provide further detail at the next meeting.

General Business:

DM noted that Maxwell was planning to submit a modification for the Antiene Rail Spur Development Consent. The modification would extend the operation of the Antiene Rail Spur Development Consent to align with the approved operating life of the Maxwell Underground Mine. There would be no change to the boundary or transport limits are proposed. Maxwell is proposing to submit the modification in quarter two of 2023.

WP requested that BHP advise of any implications of the proposed 2030 closure of the Mt Arthur project relevant to the Joint CCC. Action: AW to investigate the implications and reported back to the CCC for the next meeting.

Next Meeting:

Wednesday 21st June 2023
With Chair Lisa Andrews

Meeting close:

Meeting closed at 10am with Chair thanking everyone for coming. There were two Actions.

Action 1. AN to provide further detail on the extended downtime for the TEOM and any actions put in place.

Action 2. AW to advise of any implications of the 2030 closure of the Mt Arthur project relevant to the Joint CCC.