



Maxwell CCC Presentation
13 September 2023

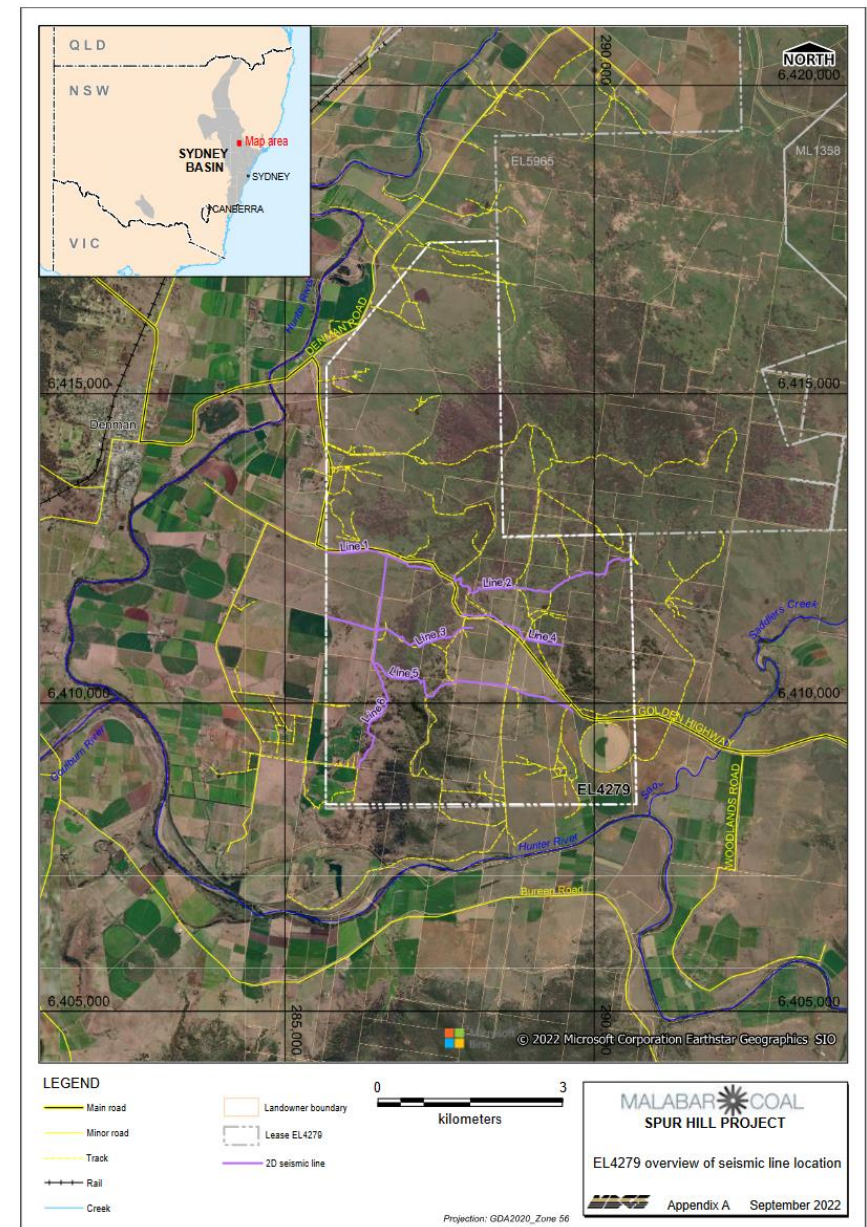
Meeting Agenda

No.	Topic	Who
1	Welcome & Introductions	Chairperson
2	Apologies	Chairperson
3	Acknowledgement of Country	Chairperson
4	Declaration of Pecuniary Interests	Chairperson
5	Business Arising/Action Items	Chairperson
6	Correspondence	Chairperson
7	Spur Hill Exploration Licence Update	James Johnson
8	Maxwell Underground Mine Update	James Johnson
9	Management Plans and Environmental Performance	Donna McLaughlin and Alex Newton
10	Community Updates	Donna McLaughlin and Teagan Rutter
11	Community Questions	All
12	Antiene Modification	Donna McLaughlin and Alex Newton
13	General Business	All
14	Next Meeting	Chairperson
15	Meeting close	Chairperson

7. Spur Hill Exploration Licence Update

Spur Hill Exploration

- Preparations for 2D seismic programme progressing.
- Work completed:
 - Archaeological and ecological surveys
 - Final reports received.
- Seismic contractor and geophysicist consultant engaged.
- Assessable Prospecting Operations (APO) application submitted to NSW Resources Regulator and awaiting approval (likely early October).
- Landowner liaison to take place shortly.
- Planning for data acquisition October–November 2023 over approximately four days.
- Field preparations are required prior to acquisition.



Spur Hill 2D Seismic

- The 2D seismic programme will involve:
 - Geophone cables attached to a Recording truck are laid along the seismic line.
 - An Envirovibe buggy drives along the line vibrating at designated intervals.
 - Reflected vibrations from the rock layers below are recorded back at the surface by the geophones.
 - Everything moves forward to the next point and the process is repeated.
 - Surveyors record the locations of the vibration points and the geophones.
- Main source of vibration will be an Envirovibe buggy. In sensitive areas a hand operated unit will be used.
- Both sources use a vibrating wacker plate to transmit vibrations into the ground.
- An exclusion zone of 20 m is applied around the Envirovibe. Surface vibrations cannot be felt at distances greater than 60 m away.
- It takes 10–12 seconds to acquire each point and approximately 800 points will be recorded per day for a total of ~6.5 km/day.
- In sensitive areas where geophone cables cannot be used a cordless system can be implemented.

Envirovibe buggy



Mini-SOSIE



Recording truck



Service truck



Geophone cable



Wireless devices



8. Update on Maxwell Underground Mine

Maxwell Underground Mine - Schedule

Calendar years	2022			2023			2024			2025			2026 Onwards		
Site readiness & Construction preparation	█	█													
Construction of Access Rd & MEA		█	█	█	█	█	█	█							
Construction of Mine Access Portals, Drifts & Vent Shaft			█	█	█	█	█	█	█						
Construction of site infrastructure			█	█	█	█									
Re-commissioning of CHPP & Infrastructure			█	█	█										
Onboarding Workforce				█	█	█	█	█	█						
Whynot Seam (B&P Operations)					█	█	█	█	█	█	█	█	█	█	█
Development Coal produced to set up for Longwall production										█	█	█	█	█	█
Longwall ordered, manufactured, delivered and installed			█	█	█	█	█	█							
Design, Construction & Commissioning of overland conveyor						█	█	█	█	█					
Longwall production												█	█	█	█

MEA Earthworks

Access Rd Construction



MEA Earthworks

Woodlands Hill Portal 07/06/23



Woodlands Portal 01/09/23



9. Management Plans and Environmental Performance

Management Plan Updates

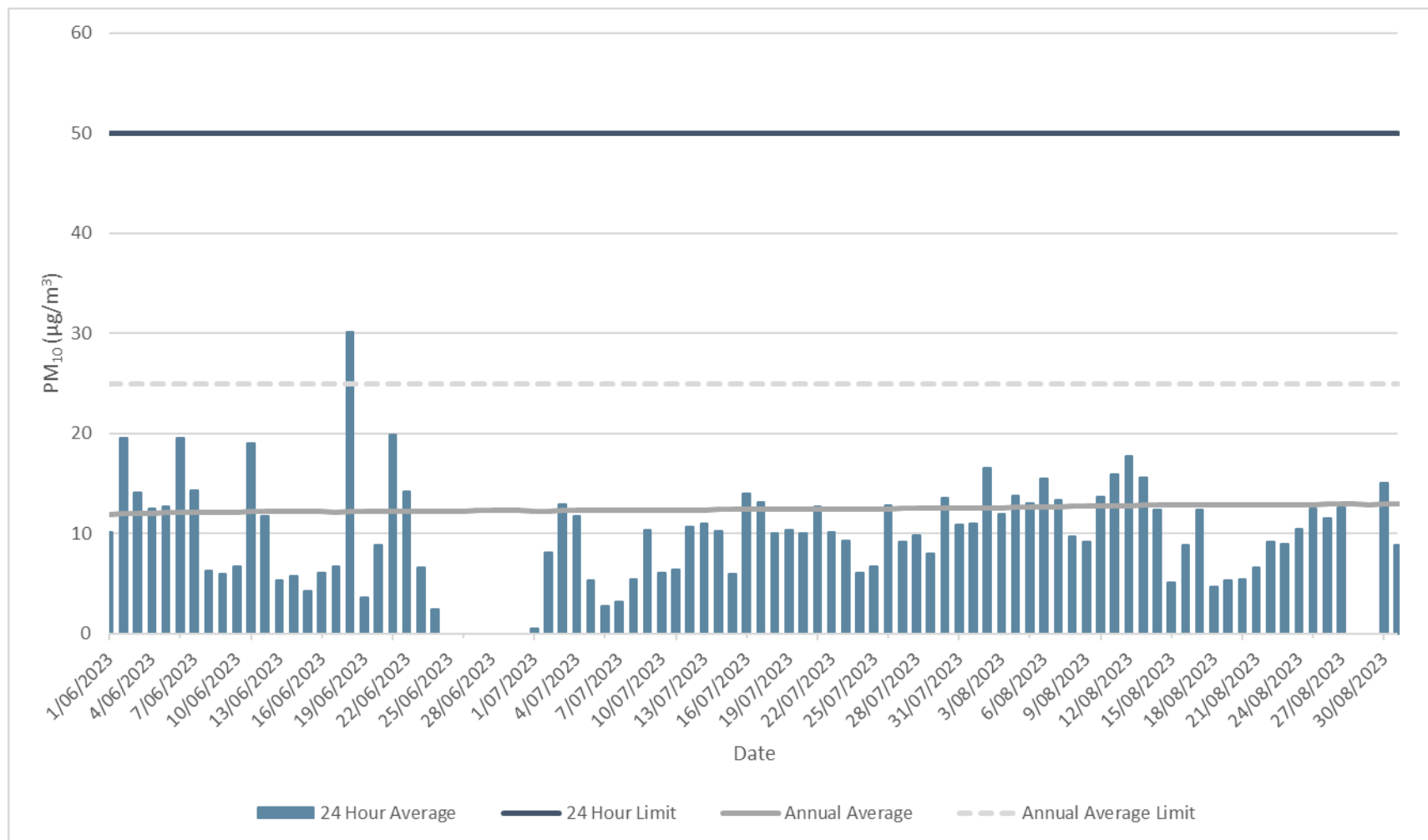
- Social Impact Management Plan – changed to new template and to include MOD2 changes.
- Rehabilitation Management Plan – to include remedial work to erosion areas, drop structures and contours.
- Forward Program – to include remedial work to erosion areas, drop structures and contours.
- Work has commenced on the Whynot Extraction Plan – specialist consultants:
 - Colin Driscoll (flora and fauna)
 - Geordie Oakes (archaeology)
 - Greg Roads (surface water)
 - James Barbato (subsidence)
 - Noel Merrick (groundwater)

Rehabilitation Update

- Weed Control:
 - Cut-and-paint Golden Wreath Wattle within Woodland Rehabilitation.
 - Spraying of Creeping Pear along access road and Southern Offset Area.
 - Spraying of Mother-of-Millions north of Thomas Mitchel Drive.
- Pest Control: shooting program in June and August. Total: 17 pigs, 3 rabbits, 96 hares, 2 cat and 36 kangaroos.
- Preparation for spring tree planting program, including slashing, ripping and spraying grass.

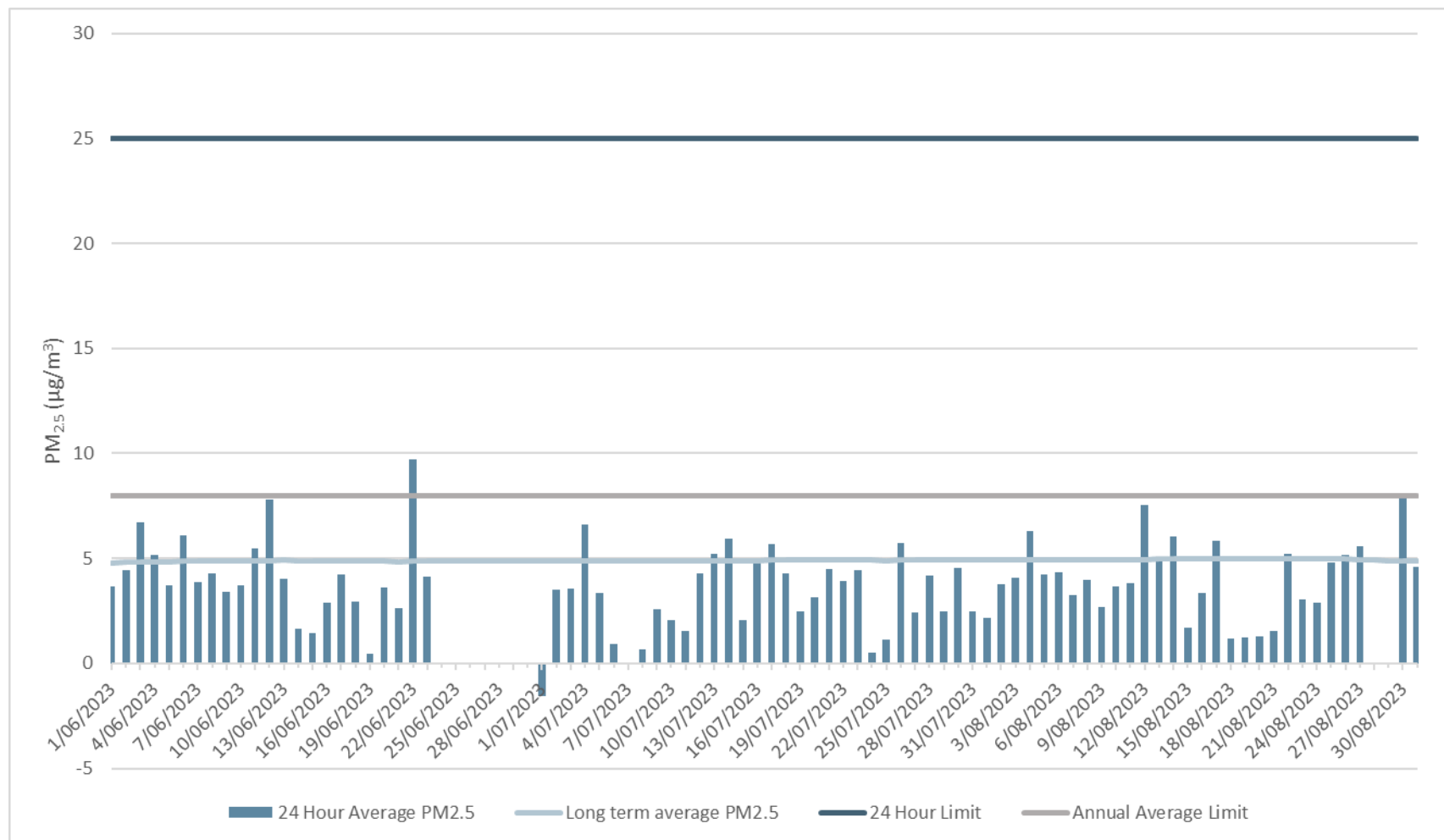


PM₁₀ at TEOM-1 (Maxwell Infrastructure)



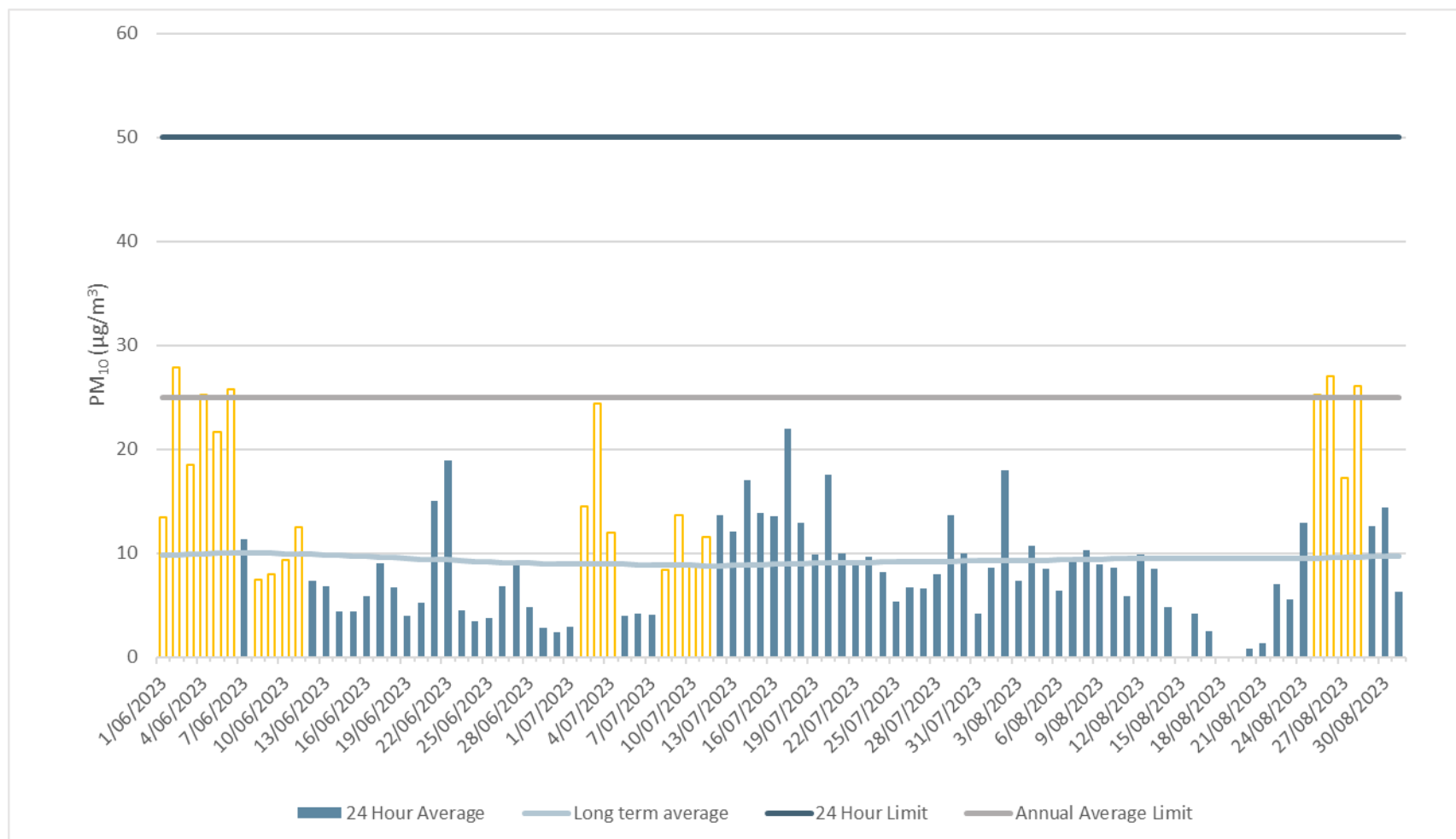
The graph shows 24-hour average and long term (rolling annual average) PM₁₀ concentrations recorded from 1 June to 31 August 2023 as measured using a TEOM. All were significantly below the 24-hour and annual impact assessment criteria.

PM_{2.5} at TEOM-1 (Maxwell Infrastructure)



The graph shows 24-hour average and long term (rolling annual average) PM_{2.5} concentrations recorded from 1 June to 31 August 2023 as measured using a TEOM. All were significantly below the 24-hour and annual impact assessment criteria.

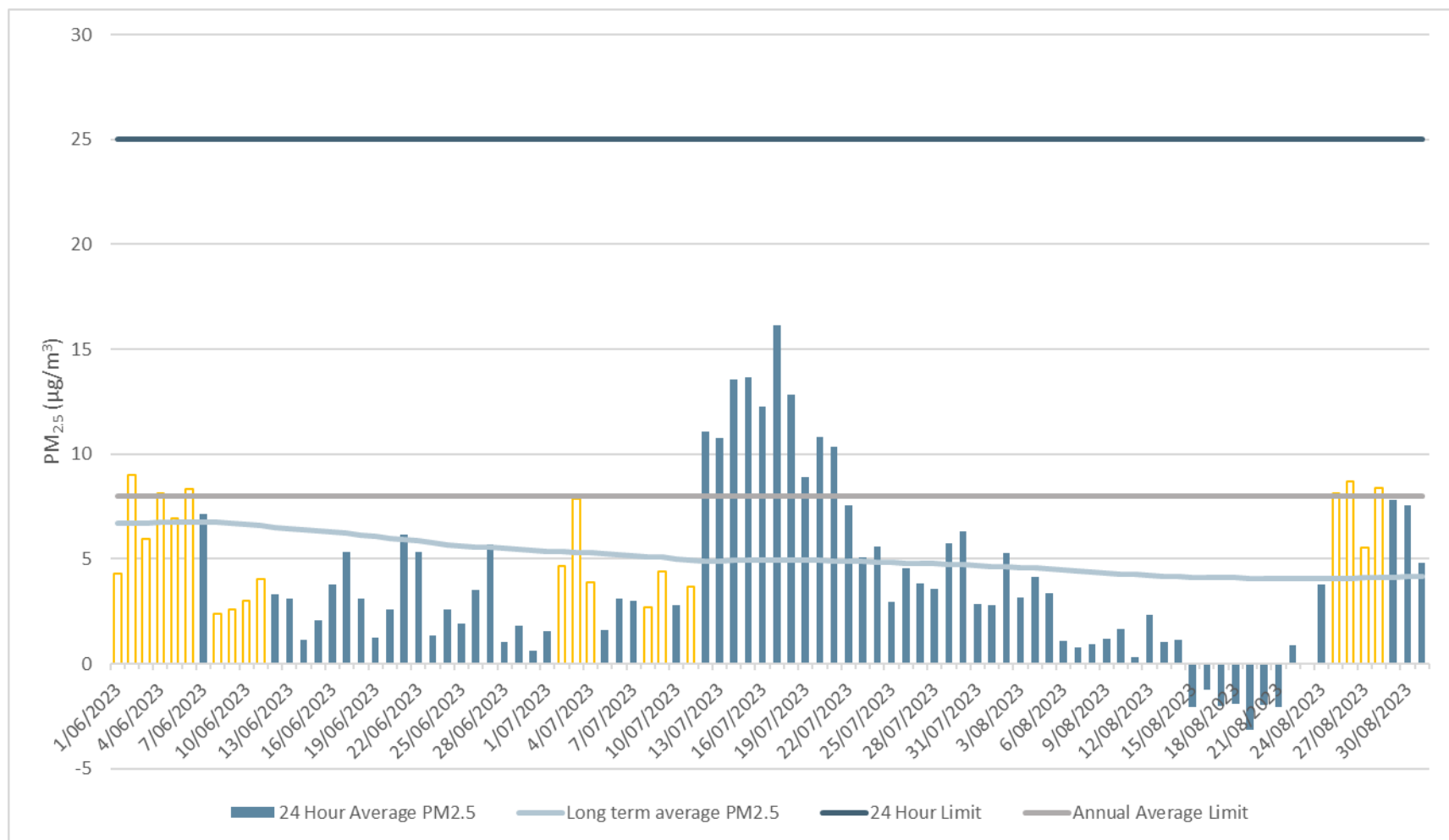
PM₁₀ at TEOM-2 (Plashett)



The graph shows 24-hour average and long term (rolling annual average) PM₁₀ concentrations recorded from 1 June 2023 to 31 August 2023 as measured using a TEOM. All were significantly below the 24-hour and annual impact assessment criteria.

As requested during the CCC meeting of 13/9/23, due to power failures causing data gaps at TEOM-2, this slide has been updated to include data from the Jerrys Plains monitoring station, which is located 1.7km to the SSE of TEOM-2 and is judged representative of the air quality at TEOM-2. The data from the Jerrys Plains station is shown as the orange bars.

PM_{2.5} at TEOM-2 (Plashett)



The graph shows 24-hour average and long term (rolling annual average) PM_{2.5} concentrations recorded from 1 June 2023 to 31 August 2023 as measured using a TEOM. All were significantly below the 24-hour and annual impact assessment criteria. Small negative values in the range are a function of the TEOM instrument at very low concentrations.

As for PM₁₀ at TEOM-2, the graph has been supplemented to include data from the Jerrys Plains monitoring station (shown as the orange bars). PM_{2.5} is not measured at the Jerrys Plains monitor, hence the year to date ratio of PM₁₀ to PM_{2.5} from TEOM-1 has been applied to data from PM₁₀ data from TEOM-2 to derive PM_{2.5} at TEOM-2.

10. Community

Complaints

- No complaints received.

Community Update

- Donated for the MCCI - Great Cattle Dog Muster event.
- Muswellbrook South Public School – Green Team. Provided and assisted with planting 10 fruit trees, topping up worm farms, and filling 2 garden beds.
- Mackenzie Day from DSHJRLFC - 2023 tour of UK/France



11. Community Questions

Community Questions

- No questions received

12. Antiene Rail Modification Update

Update - Antiene Rail Modification

- The Modification Report was placed on public exhibition by the Department of Planning and Environment (DPE) from 29 June 2023 to 12 July 2023.
- During the public exhibition period, submissions on the Modification Report were received from NSW Environment Protection Authority and Muswellbrook Shire Council.
- Nineteen submissions were also received from organisations and members of the public. Of these nineteen public submissions, all supported the Modification and no public submissions objected to the Modification.
- Draft conditions were received on 25 August 2023.
- Final determination expected in September 2023.

13. General Business

Thank you