



**Maxwell CCC Presentation**  
**15 March 2023**

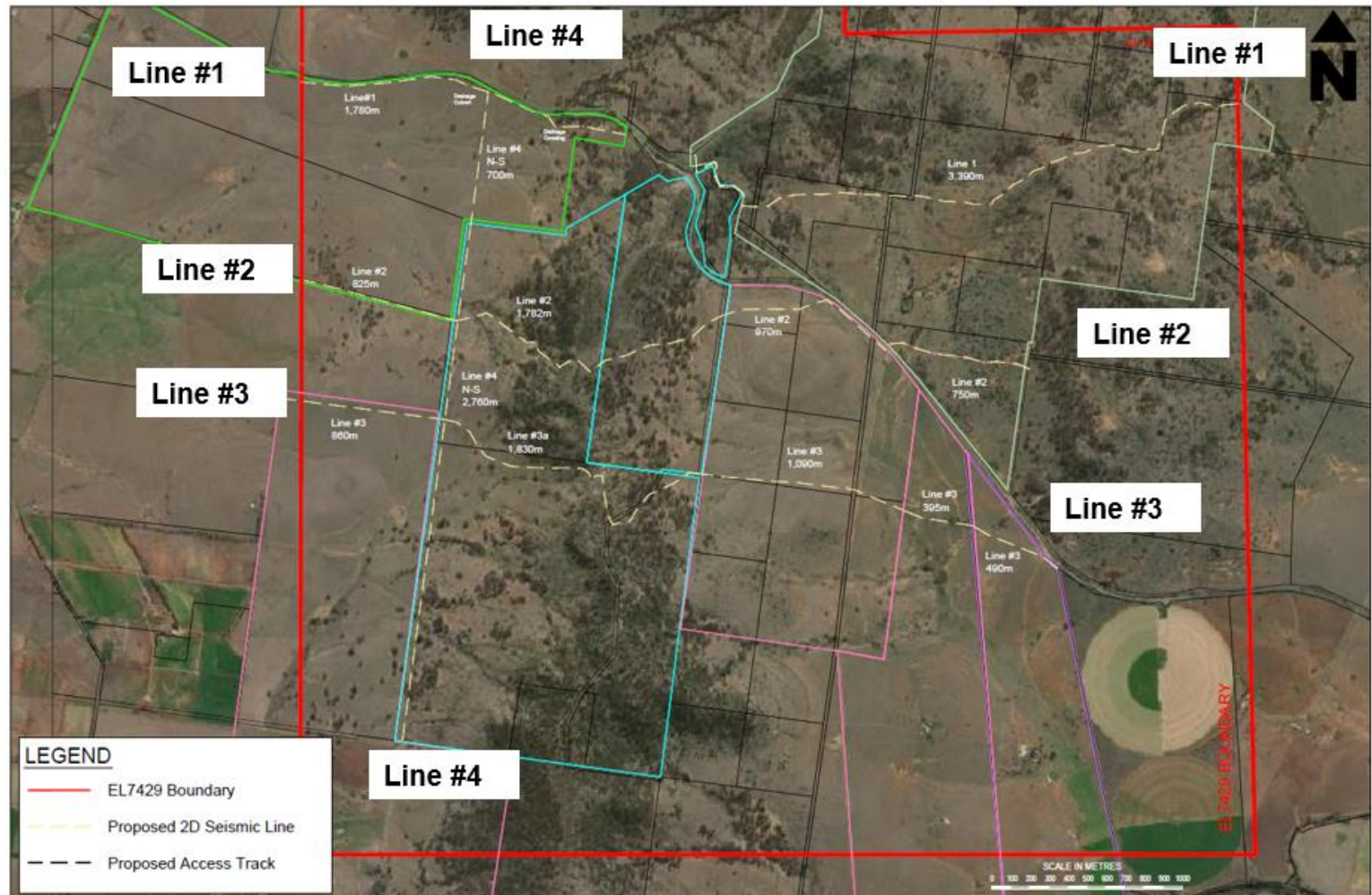
# Meeting Agenda

No.	Topic	Who
1	Welcome & Introductions	Chairperson
2	Apologies	Chairperson
3	Declaration of pecuniary interests	Chairperson
4	Business Arising/Action Items	Chairperson
5	Correspondence	Chairperson
6	Update on the Spur Hill Project	James Johnson
7	Update on the Maxwell Underground Mine	James Johnson
8	Environmental Performance	Donna McLaughlin and Alex Newton
9	Community Updates	Donna McLaughlin
10	Community Questions	All
11	Antiene Modification	Donna McLaughlin and Alex Newton
12	General Business	All
13	Next Meeting	Chairperson
14	Meeting close	Chairperson

## **6. Update on the Spur Hill Underground Metallurgical Project**

# Spur Hill 2D Seismic Lines

- Delays with wet weather and contractor availability
- Work complete:
  - Archaeological and Ecological surveys completed
  - ESF4 form to be submitted
- Planning to commence work in Q2 of this year.



## 7. Update on the Maxwell Underground Mine

# Schedule

Calendar years	2022			2023			2024			2025			2026 Onwards		
Site readiness & Construction preparation	█	█													
Construction of Access Rd & MEA		█	█	█	█	█									
Construction of Mine Access Portals, Drifts & Vent Shaft			█	█	█	█	█	█							
Construction of site infrastructure			█	█	█										
Re-commissioning of CHPP & Infrastructure			█	█	█										
Onboarding Workforce				█	█	█	█	█	█						
Whynot Seam (B&P Operations)				█	█	█	█	█	█	█	█	█	█	█	█
Development Coal produced to set up for Longwall production									█	█	█	█	█	█	█
Longwall ordered, manufactured, delivered and installed			█	█	█	█	█	█							
Design, Construction & Commissioning of overland conveyor					█	█	█	█	█	█	█				
Longwall production											█	█	█	█	█

# MEA Earthworks

Whynot Portal 09/02/23

Whynot Portal 08/03/23



# MEA Earthworks

Woodlands Hill Portal 09/02/23

Woodlands Portal 08/03/23





# Access Road & Conveyor Trace



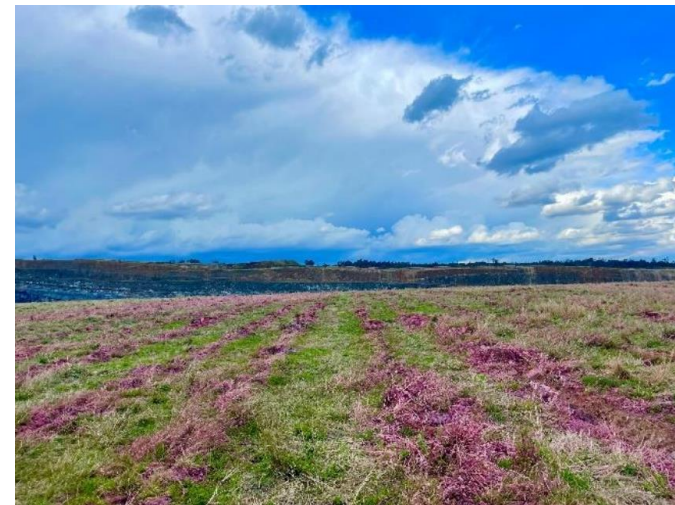
# MEA HV Overhead Powerlines



## 8. Environmental Performance

# Rehabilitation Update

- 22 hectares of the invasive golden wreath wattle (*Acacia saligna*) to north of southern void mulched with forest mulcher; follow up spraying in rip lines, in advance of tree planting.
- Spraying of St John's wort in the Plashett offset areas - December.
- Spraying of pampas grass and spiny rush around and downstream of Access Road Dam - February
- Pig, fox and wild dog trapping in December & February.

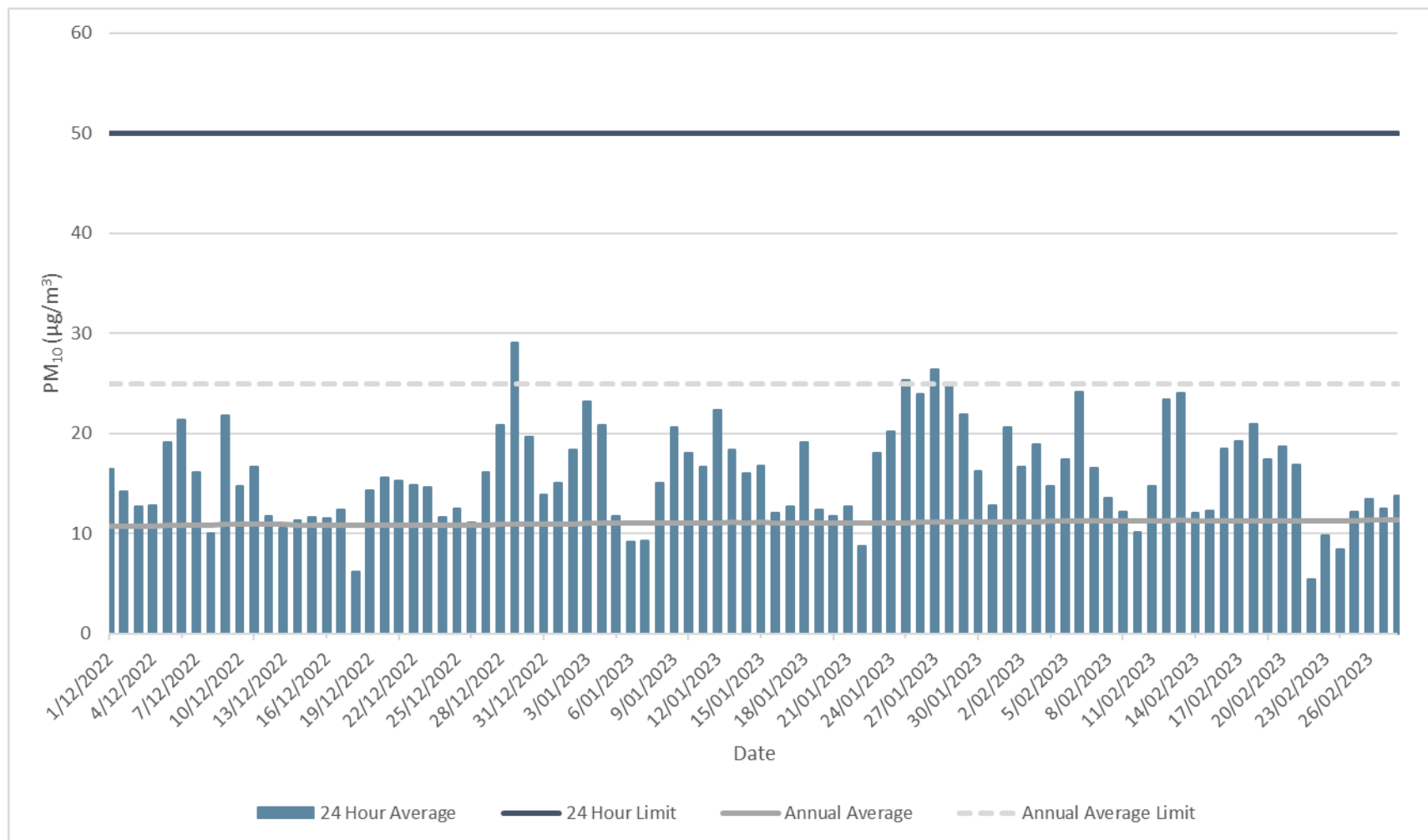


Photos courtesy of Enright Land Management

# Management Plans and Audits

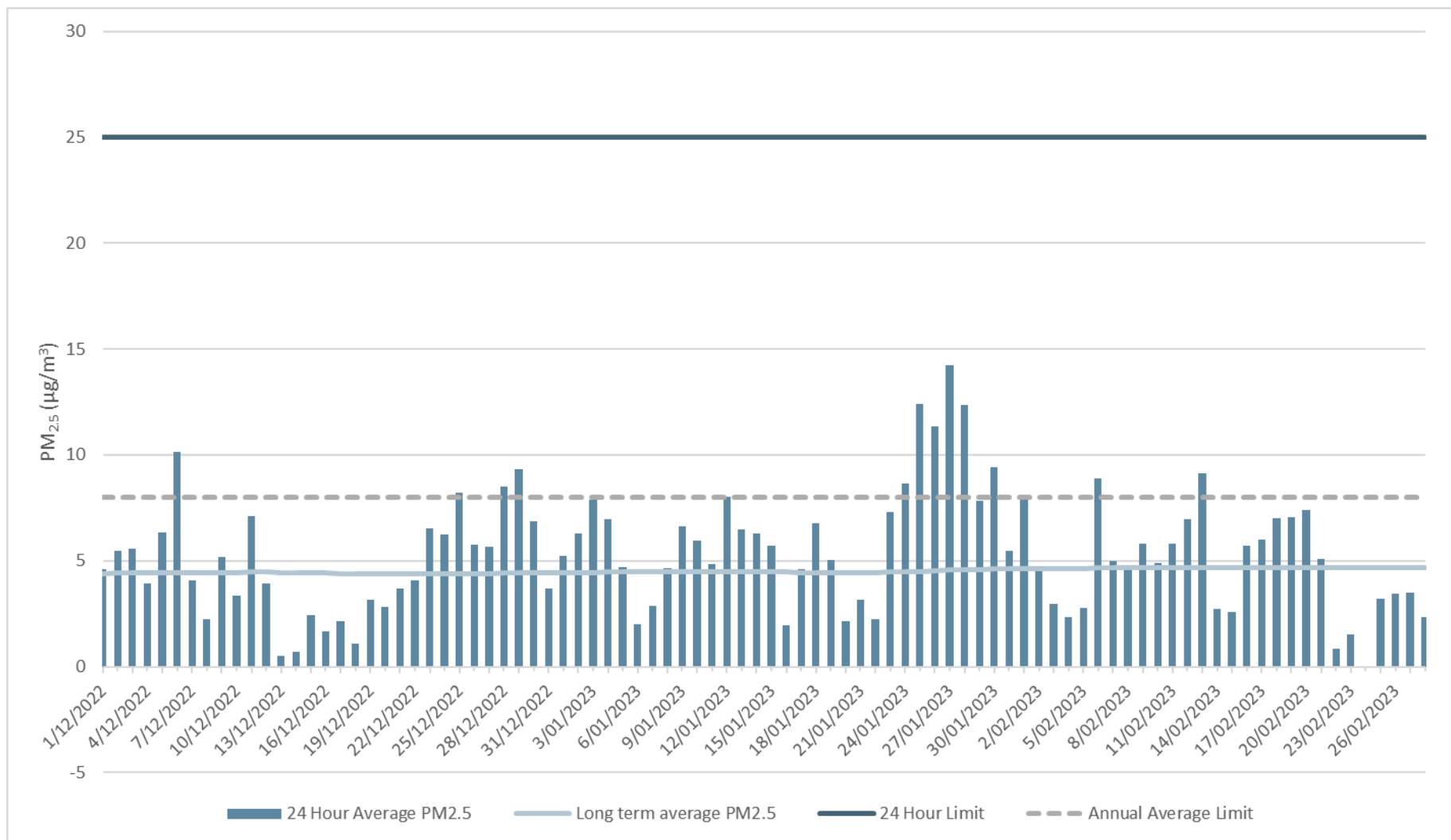
- The following plans have been updated and approved following MOD2:
  - Aboriginal Cultural Heritage
  - Air Quality and Greenhouse Gas
  - Contaminated Materials Protocol
  - Environmental Management Strategy
  - Spontaneous Combustion
  - Traffic Management
  - Water Management
- The Rehabilitation Strategy has been approved by DPE.
- In December 2022, Maxwell received a notice from the Resources Regulator to engage a suitably qualified expert to undertake an assessment that sets out the design of modifications to the rehabilitated landform and surface water management structures on the rehabilitated landform to address any instability and erosion risks identified.

# PM<sub>10</sub> at TEOM-1 (Maxwell Infrastructure)



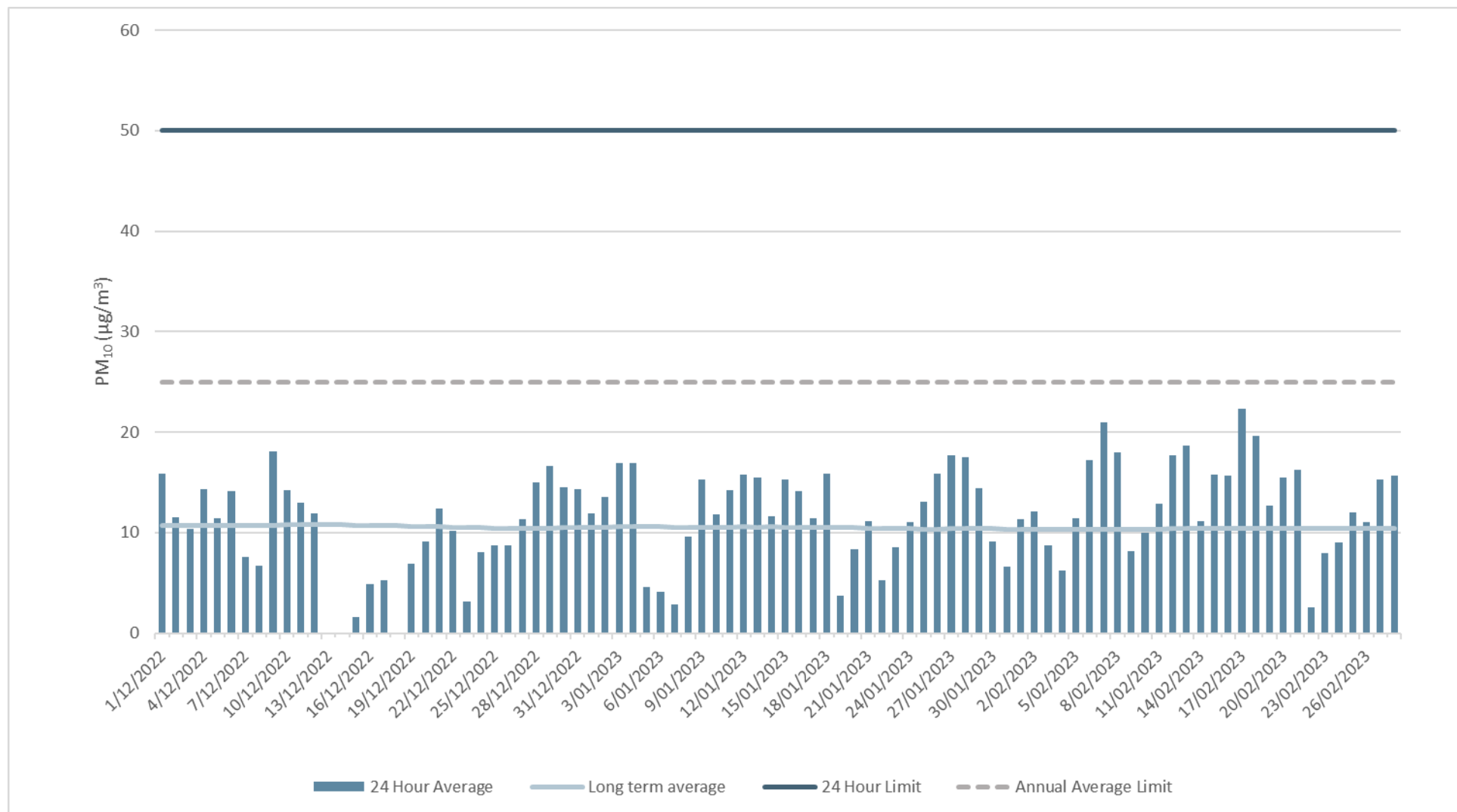
The graph shows 24-hour average and long term (rolling annual average) PM<sub>10</sub> concentrations recorded from 1 December to 28 February 2023 as measured using a TEOM. All were significantly below the 24-hour and annual impact assessment criteria.

# PM<sub>2.5</sub> at TEOM-1 (Maxwell Infrastructure)



The graph shows 24-hour average and long term (rolling annual average) PM<sub>2.5</sub> concentrations recorded from 1 December to 28 February 2023 as measured using a TEOM. All were significantly below the 24-hour and annual impact assessment criteria.

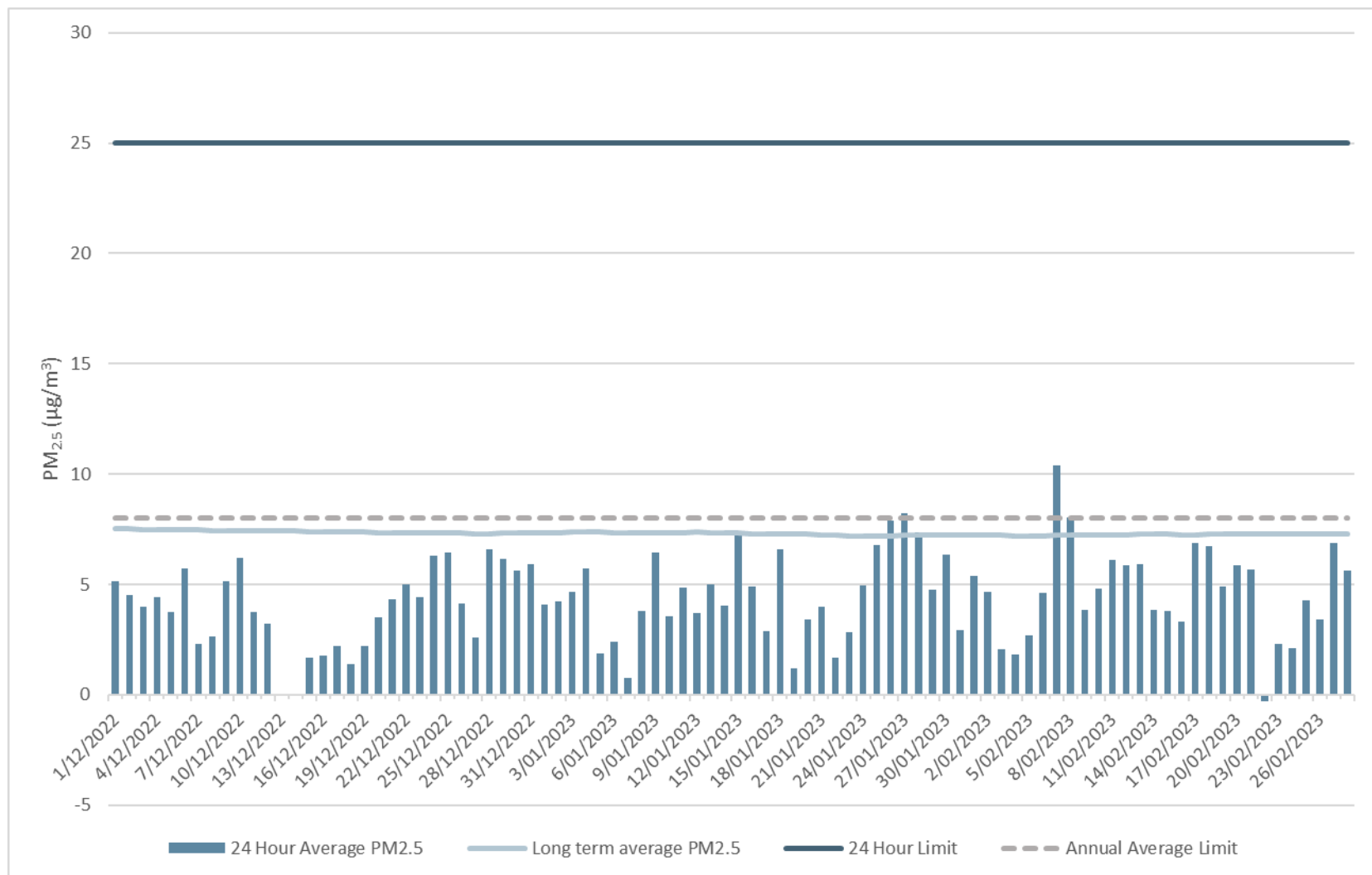
# PM<sub>10</sub> at TEOM-2 (Plashett)



The graph shows 24-hour average and long term (rolling annual average) PM<sub>10</sub> concentrations recorded from 1 December 2022 to 28 February 2023 as measured using a TEOM. All were significantly below the 24-hour and annual impact assessment criteria.



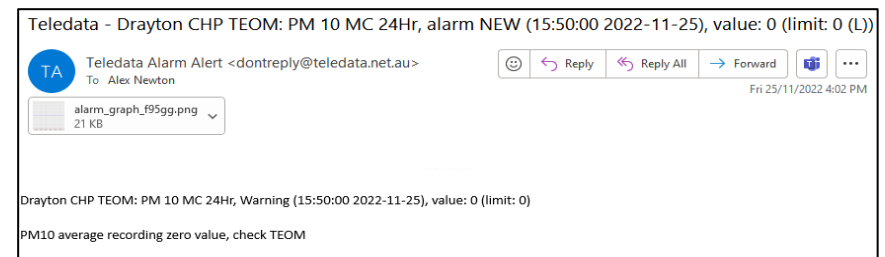
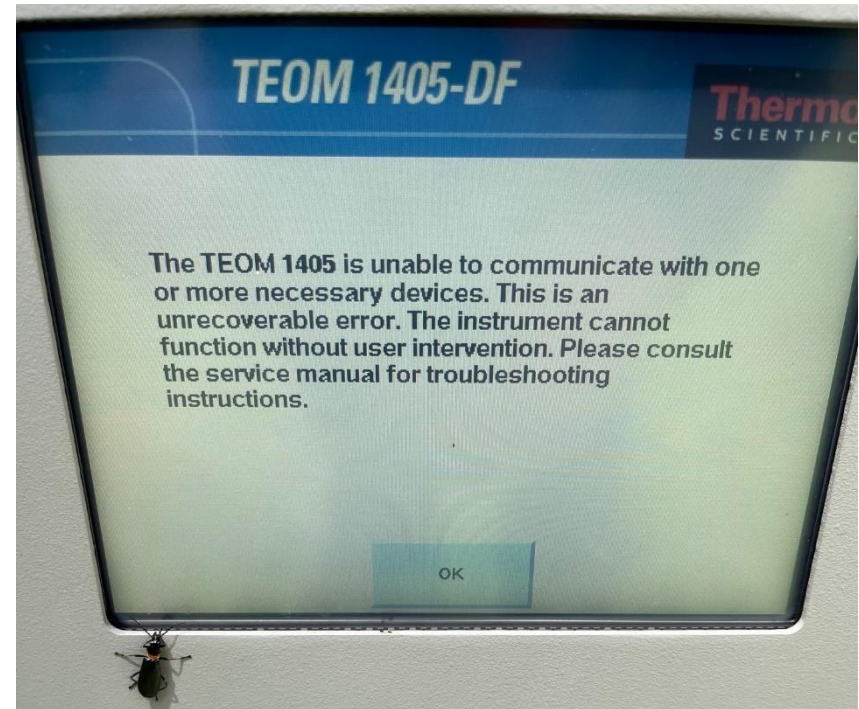
# PM<sub>2.5</sub> at TEOM-2 (Plashett)



The graph shows 24-hour average and long term (rolling annual average) PM<sub>2.5</sub> concentrations recorded from 1 December 2022 to 28 February 2023 as measured using a TEOM. All were significantly below the 24-hour and annual impact assessment criteria. Small negative values in the range are a function of the TEOM instrument at very low concentrations.

# Investigation into TEOM downtime October 2022

- Previous CCC meeting: PM<sub>10</sub> & PM<sub>2.5</sub> dataset from TEOM-1 shown with apparent missing data (actually 0 µg/m<sup>3</sup> recorded from 19–31 October 2022).
- Upon regular check of data from the office which determined the equipment was ‘flatlining’, then visiting the TEOM on 31 October the screen showed ‘unrecoverable error’ resulting in loss of data during this period. Restarting the TEOM resolved the issue.
- Monitoring platform ‘Teledata’ previously set to generate email alert only when data is missing.
- Email alerts now also include when four consecutive five-minute values are 0 µg/m<sup>3</sup> (ie when **flatlining**)
- No missing 24-hour average data periods since. Any alerts received were responded to as required.



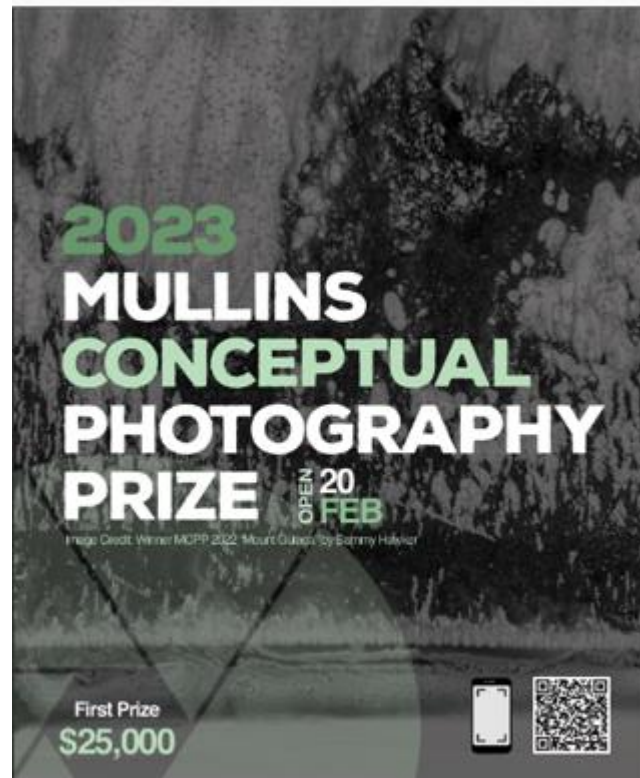
## 9. Community

# Complaints

- No complaints received.

# Community Update

- Muswellbrook Day View Club – donation to supply back to school items
- Sponsorship towards the Mullins Conceptual Photography Prize, exhibited at Muswellbrook Regional Arts Centre.
- Donated prize for the Muswellbrook Cats AFC Mega Raffle, funding drive.
- Sponsorship for Bureen RFS to assist in rewiring of brigade building.
- Denman Sandy Hollow JRLFC, main sponsor for 2023 season.



## 10. Community Questions

# Community Questions

- No questions received

# 11. Antiene Rail Modification



# Introduction

- Malabar commenced the planning of the Maxwell Underground Coal Mine Project (Maxwell UG Project) in early 2018 and submitted an EIS and DA in September 2019.
- The EIS considered and assessed the continued use of the Maxwell rail loop and Antiene Rail Spur, which are regulated under a separate Development Consent (DA 106-04-00).
- The Department's Assessment Report for the Maxwell UG Project recognised that a modification would be required to DA 106-04-00 to extend its approved operating life (2025) to align with the Maxwell UG Project (2047).
- Malabar commenced construction of the Maxwell UG Project in May 2022.

# Land Ownership

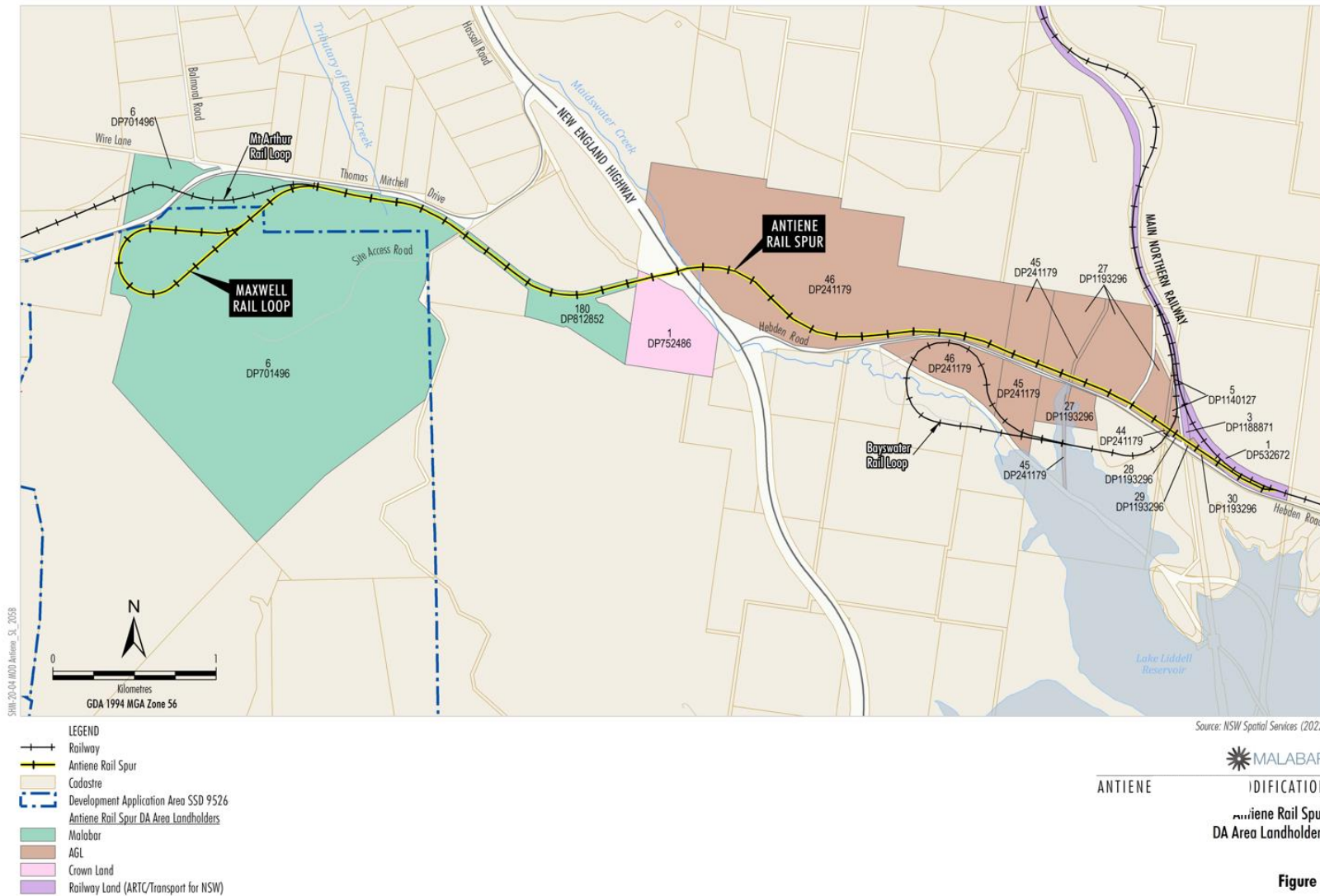


Figure 5

# Proposed Modification and Assessment Pathway

- Maxwell UG Project is approved to operate until 2047. Condition A10 of the Maxwell UG Project (Development Consent SSD 9526) states:

*Product coal may only be transported from the site by rail.*

*Note: the loading and transportation of coal via the rail loop and Antiene Rail Spur is subject to a separate development consent (DA 106-04-00).*

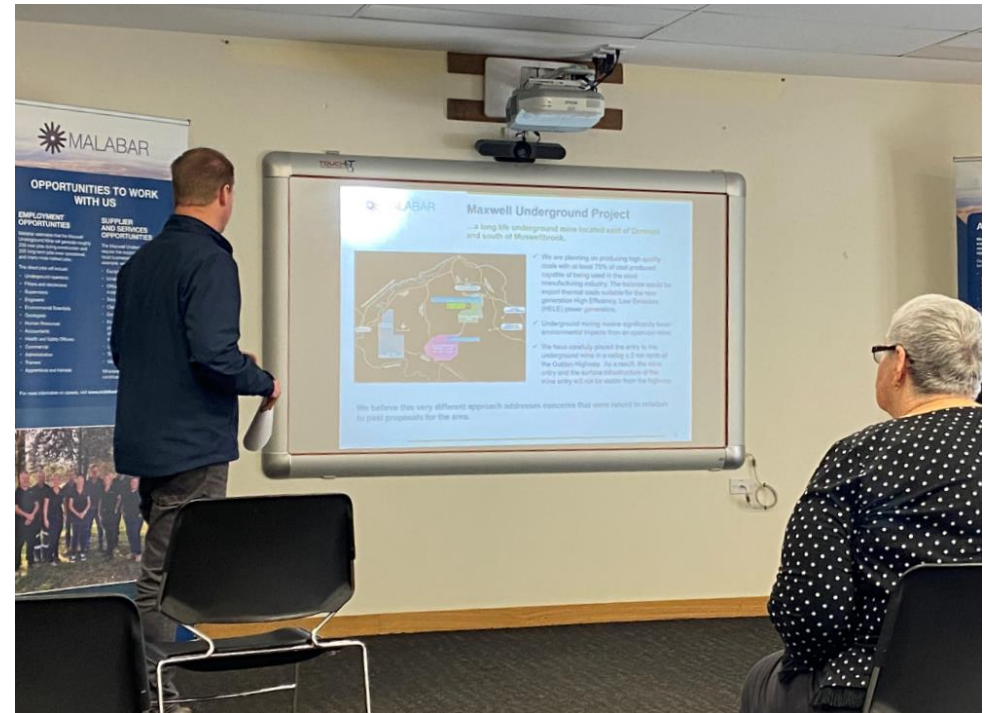
- The Modification would extend the operation of the Antiene Rail Spur Development Consent (DA 106-04-00) to align with the approved operating life of the Maxwell UG Project.
- No change to the boundary or transport limits are proposed.
- The Modification will be sought under section 4.55(2) of the EP&A Act, on the basis that the continued operation of the Antiene Rail Spur is 'substantially the same'.

# Scope of Modification Report

- The potential environmental impacts associated with use of the Antiene Rail Spur for the Maxwell UG Project were assessed in the Project EIS, including:
  - cumulative assessment of the Maxwell Infrastructure Rail Loop as part of all the other on-site noise in accordance with the requirements of the Noise Policy for Industry (NSW Environment Protection Authority, 2017);
  - an assessment of rail noise impacts associated with Project-related train movements on the Antiene Rail Spur and Main Northern Railway in accordance with the Rail Infrastructure Noise Guideline;
  - an assessment of cumulative impacts associated with the concurrent use of the Antiene Rail Spur by the Mt Arthur Coal Mine and the Project; and
  - a review of potential for coal dust emissions from Project train wagons.
- No new technical studies are considered to be required for the Modification Report. Instead, the Modification Report would summarise the relevant outcomes of the above technical studies.
- The Modification Report will be prepared in accordance with the *State Significant Development Guidelines* (DPIE, 2021), including *Appendix E – Preparing a Modification Report*.

# Planned Stakeholder Engagement

- ▶ Comprehensive consultation was undertaken as part of the Maxwell Underground Mine EIS.
- ▶ Consultation for the Modification Report will include:
  - ▶ Department of Planning and Environment
  - ▶ Muswellbrook Shire Council
  - ▶ Environment Protection Authority
  - ▶ Australian Rail Track Corporation
  - ▶ Transport for NSW
  - ▶ Crown Lands
  - ▶ Community Consultative Committees
  - ▶ BHP
  - ▶ AGL



# Timing

- ▶ December 2022:
  - ▶ Scoping meeting with DPE.
  - ▶ Confirmation that the Modification can be sought under section 4.55(2) of the EP&A Act.
- ▶ Q2 of 2023 - Submission of Modification Report.
- ▶ Q4 of 2023 – Determination of the Modification.



## 12. General Business

Thank you



