



Maxwell CCC Presentation
7 December 2022

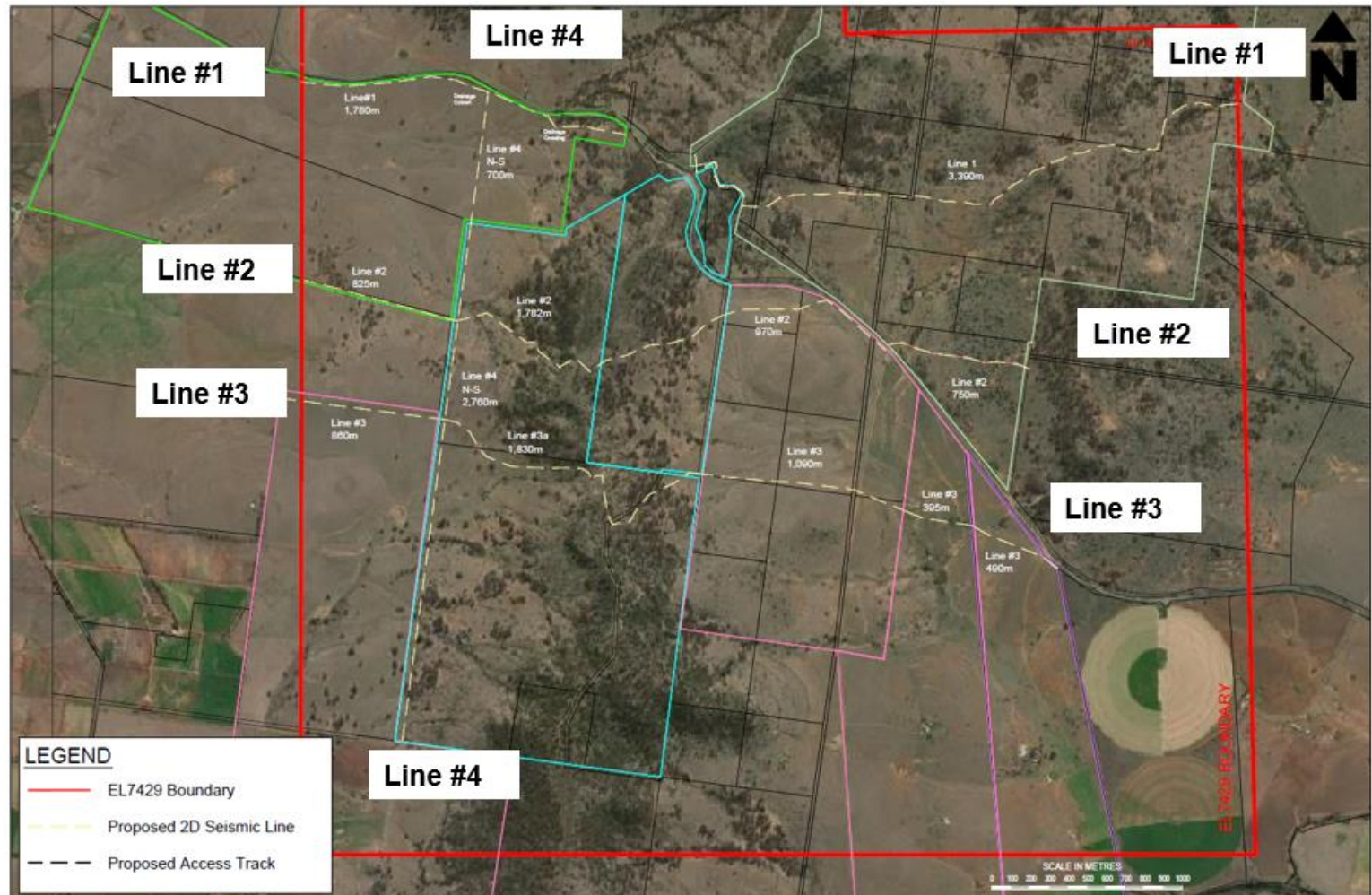
Meeting Agenda

No.	Topic	Who
1	Site Tour	All
2	Welcome & Introductions	Chairperson
3	Apologies	Chairperson
4	Declaration of pecuniary interests	Chairperson
5	Business Arising/Action Items	Chairperson
6	Correspondence	Chairperson
7	Update on Maxwell and Spur Hill Projects	James Johnson
8	Environmental Performance	Donna McLaughlin and Alex Newton
9	Community Updates	Jason Parsons
10	Community Questions	All
11	General Business	All
12	Next Meeting	Chairperson
13	Meeting close	Chairperson

5. Update on the Spur Hill Underground Metallurgical Project

Spur Hill 2D Seismic Lines

- Delays with wet weather and contractor availability
- Work complete:
 - Archaeological and Ecological surveys completed
 - ESF4 form to be submitted
- Planning to commence work in Q1 of next year.

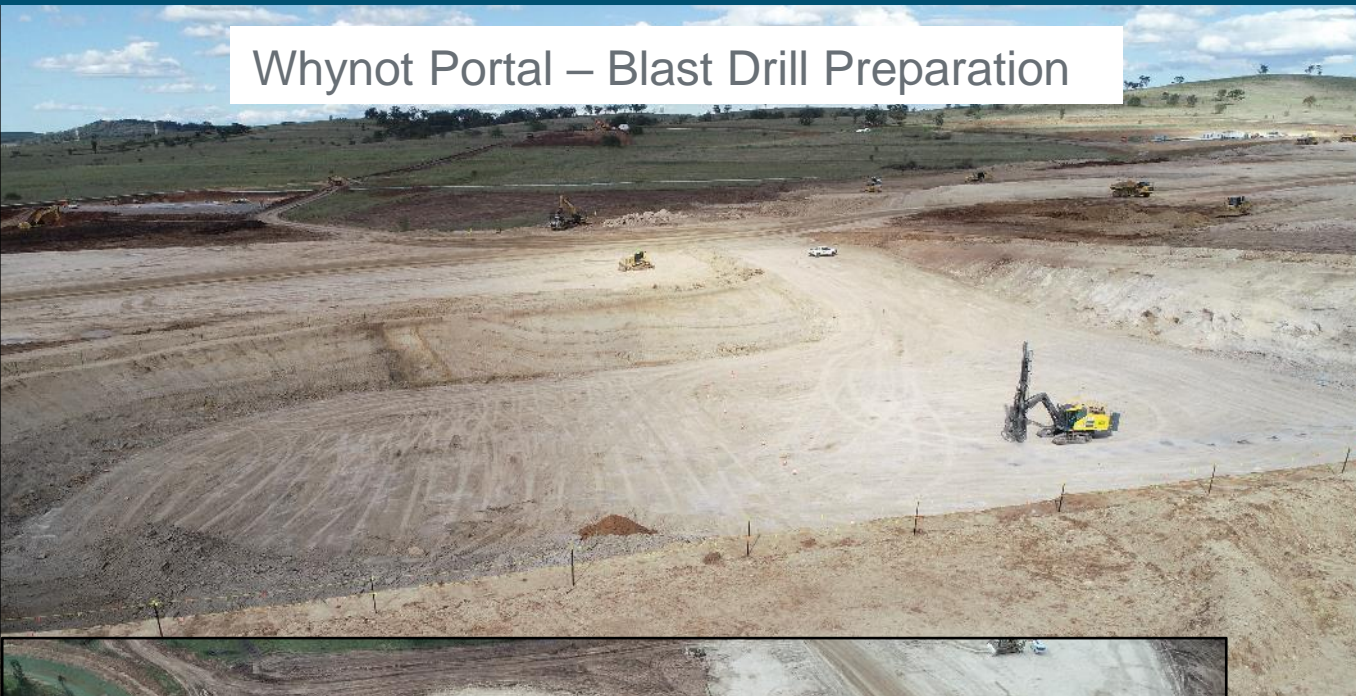


5. Update on the Maxwell Underground Metallurgical Mine

Schedule

Calendar years	2022			2023				2024				2025 onwards		
Site readiness & Construction preparation	█	█	█											
Construction of Access Rd & MEA		█	█	█	█	█	█							
Construction of Mine Access Portals, Drifts & Vent Shaft			█	█	█	█								
Construction of site infrastructure			█	█	█	█								
Onboarding Workforce				█	█	█	█	█	█	█				
Whynot Seam (B&P Operations)					█	█	█	█	█	█	█	█	█	█
Development Coal produced to set up for Longwall production								█	█	█	█	█	█	█
Longwall ordered, manufactured, delivered and installed		█	█	█	█	█	█	█	█					
Design & Construction of overland conveyor				█	█	█	█	█	█					
Longwall production											█	█	█	█

Construction Update – Mine Entry Area



Whynot Portal – Blast Drill Preparation



Fire Tank Slabs



Whynot Portal



17 ML Mine Water Dam

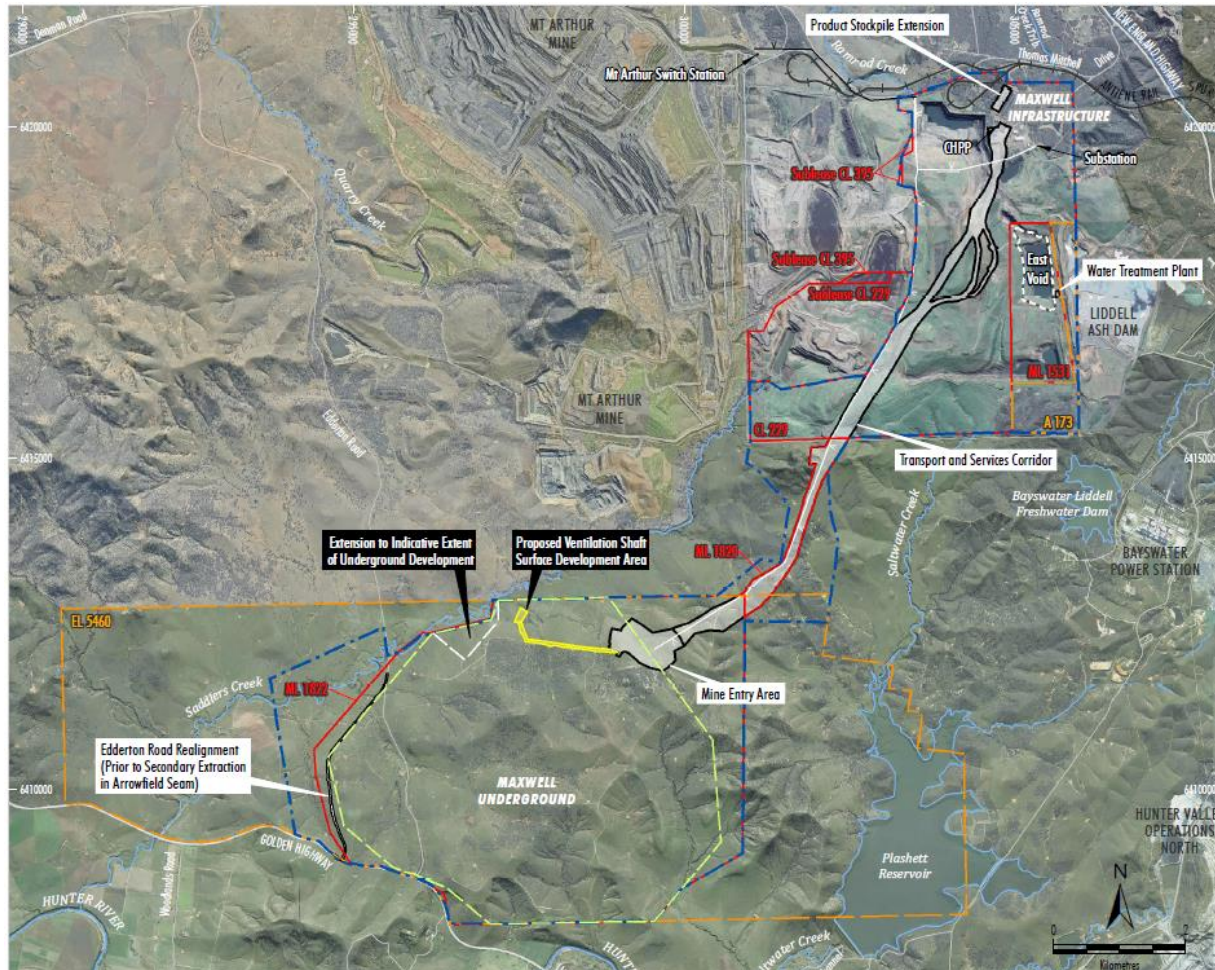
Construction Update – Mine Entry Area



Woodlands Hill Portal



MOD2 – Realignment Modification Overview



- The proposed modification is wholly within Development Application Area.
- Key changes are:
 - Re-orientation of longwall panels to better align to geotechnical conditions
 - Commencing production in the Woodlands Hill seam initially with 145m wide longwall panels, and then increasing the longwall to 300m wide. (The EIS commences with a 300m wide longwall at the outset).
 - Relocation of the Woodlands Hill seam ventilation shaft to suit this revised mine layout.



MOD2 – Realignment Modification Overview

- Assessment Report submitted 30 June 2022.
- Public exhibition from 2 to 22 August 2022:
- Response to submissions submitted 2 September 2022.
- Draft conditions received 26 September 2022.
- MOD2 approved 20 October 2022.

Development Consent

Section 4.36 of the Environmental Planning and Assessment Act 1979

The Independent Planning Commission of NSW (the Commission), as the declared consent authority under clause 8A of the State Environmental Planning Policy (State and Regional Development) 2011 and section 4.5(a) of the Environmental Planning and Assessment Act 1979, approves the development application referred to in Schedule 1, subject to the conditions in Schedule 2.

These conditions are required to:

- prevent, minimise, or offset adverse environmental impacts;
- set standards and performance measures for acceptable environmental performance;
- require regular monitoring and reporting; and
- provide for the ongoing environmental management of the development

Mary O'Kane
Member of the Commission

John Hann
Member of the Commission

Sydney

22 December 2020

SCHEDULE 1

Application Number: SSD 9526
Applicant: Maxwell Ventures (Management) Pty Ltd
Consent Authority: The Independent Planning Commission of NSW
Site: The land defined in Appendix 1
Development: Maxwell Underground Coal Mine Project

Blue type represents October 2021 modification (Mod 1)

Green type represents October 2022 modification (Mod 2)

The Department has prepared a consolidated version of the consent which is intended to include all modifications to the original determination instrument.

The consolidated version of the consent has been prepared by the Department with all due care. This consolidated version is intended to aid the consent holder by combining all consents relating to the original determination instrument but it does not relieve a consent holder of its obligation to be aware of and fully comply with all consent obligations as they are set out in the legal instruments, including the original determination instrument and all subsequent modification instruments.

NSW Government
Department of Planning and Environment

6. Environmental Performance

Rehabilitation Update

- Planting of 4,000 plants in November over 5ha to increase wildlife connectivity throughout the woodland corridor.
- Weed control completed during November targeting St John's Wort.
- Dog and fox baiting occurred undertaken in October and November.
- Pig and wild dog trapping undertaken in November.
- Pest control planned for December in recent revegetation areas and the southern offset area.

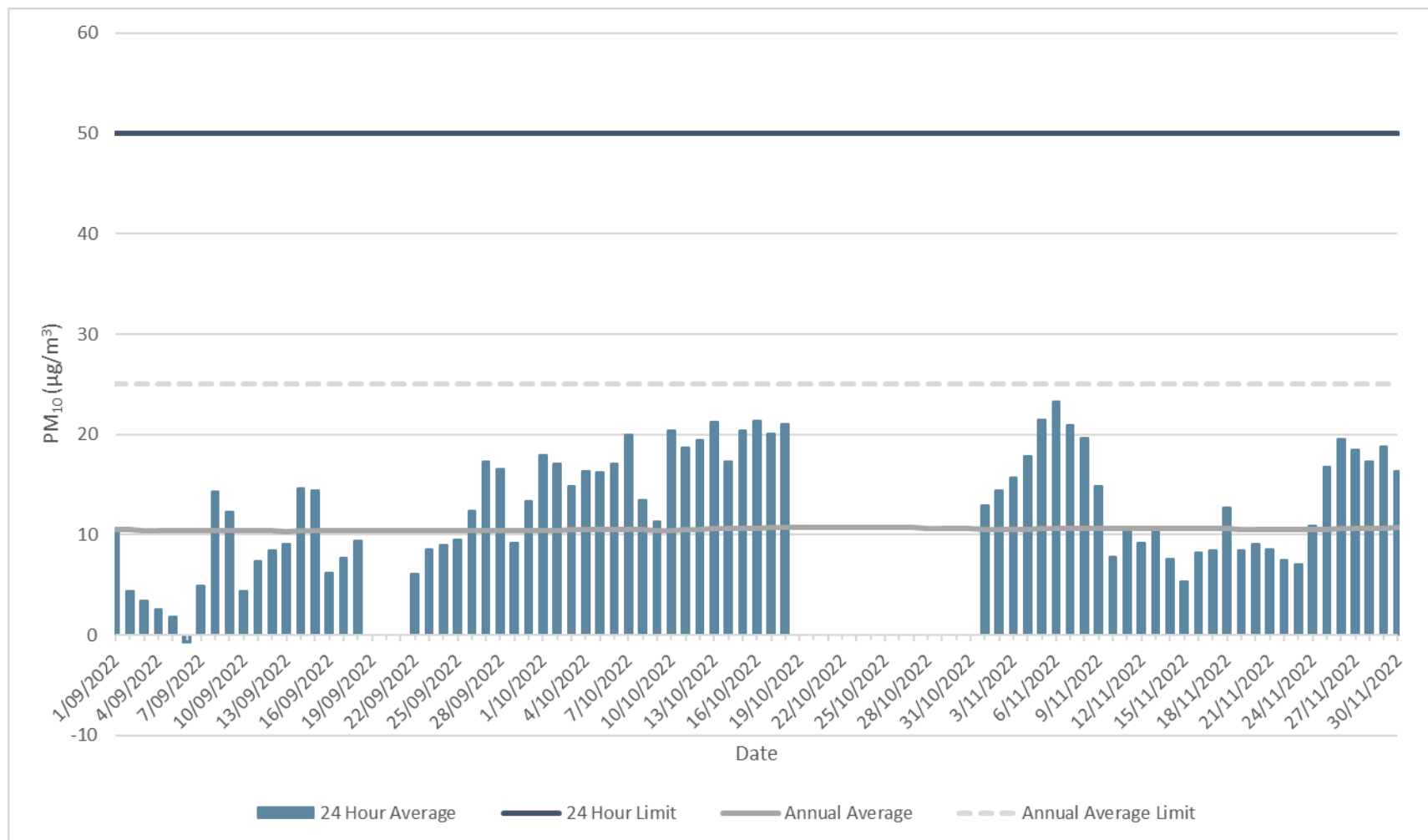


Management Plans and Audits

- Plans completed:
 - **Social Impact Management Plan**
- Commenced preparing:
 - **Extraction Plan**
 - **Rehabilitation Strategy**
- As reported during previous meetings, Development Consent SSD_9526 required an Independent Environmental Audit (IEA) to be conducted within one year of commencement.
 - **The final report was approved by DPE on 14 September and circulated to the CCC and other stakeholders on 26 September.**

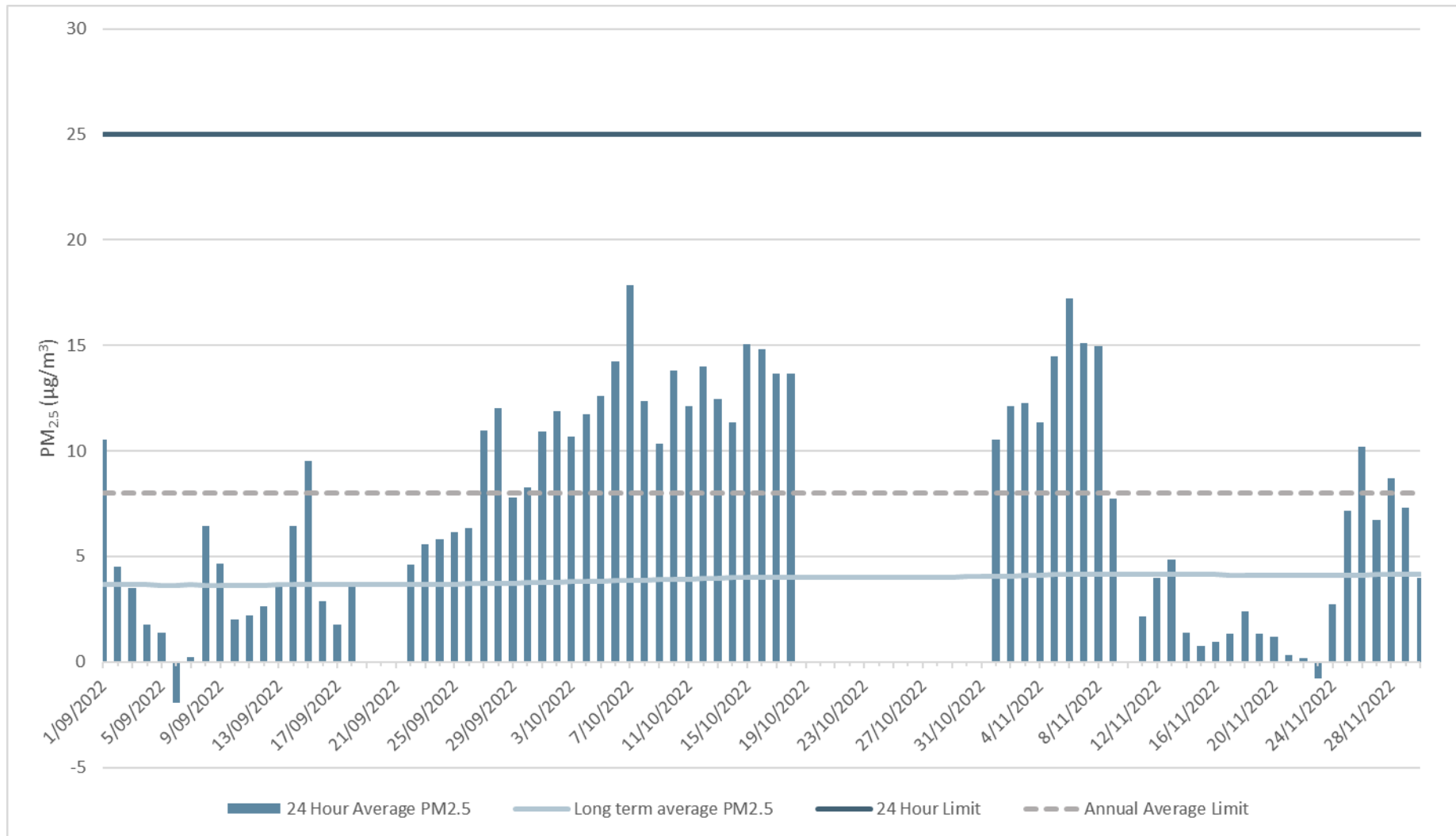


PM₁₀ at TEOM-1 (Maxwell Infrastructure)



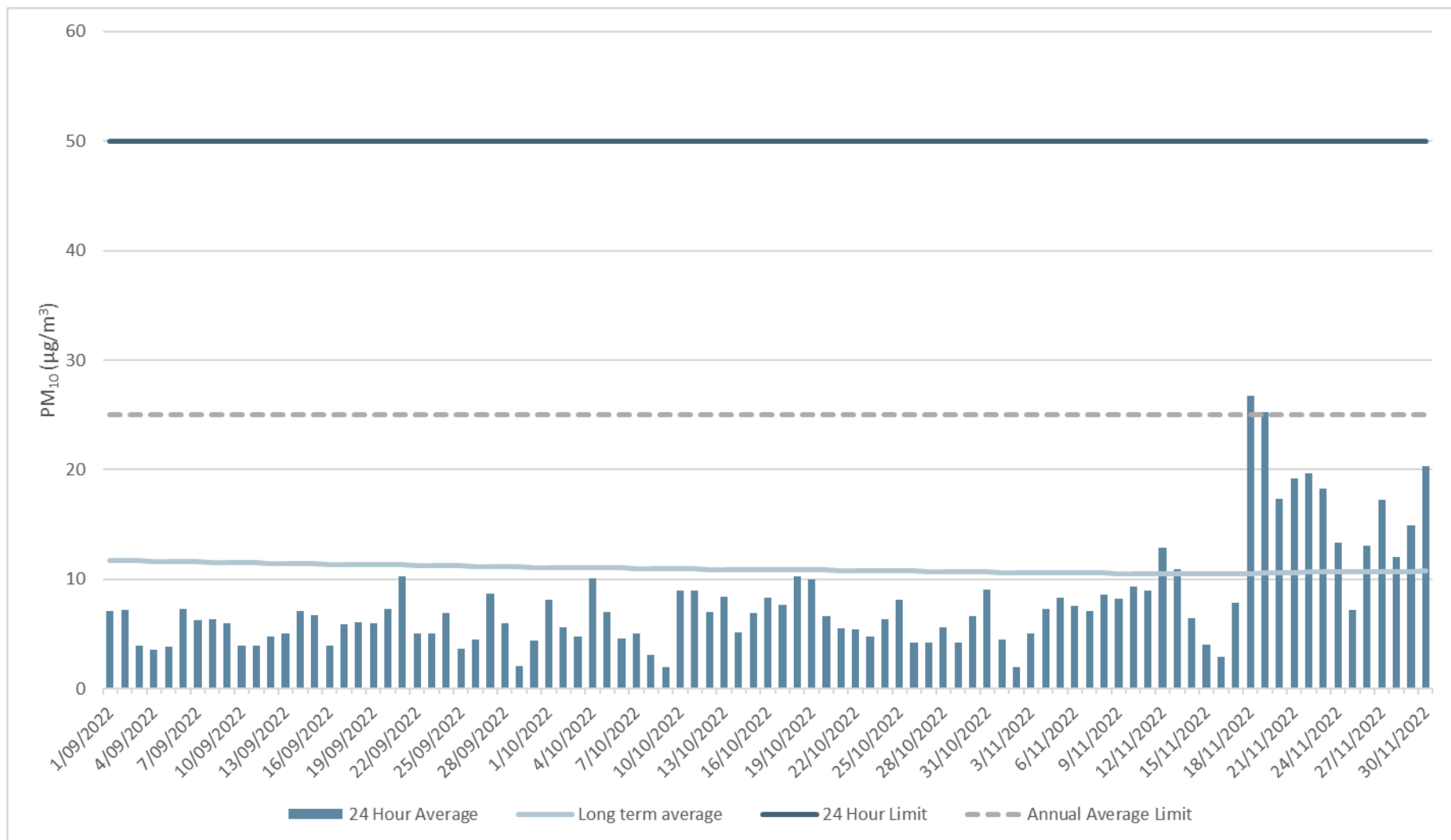
The graph shows 24-hour average and long term (rolling annual average) PM₁₀ concentrations recorded from 1 September to 30 November 2022 as measured using a TEOM. All were significantly below the 24-hour and annual impact assessment criteria.

PM_{2.5} at TEOM-1 (Maxwell Infrastructure)



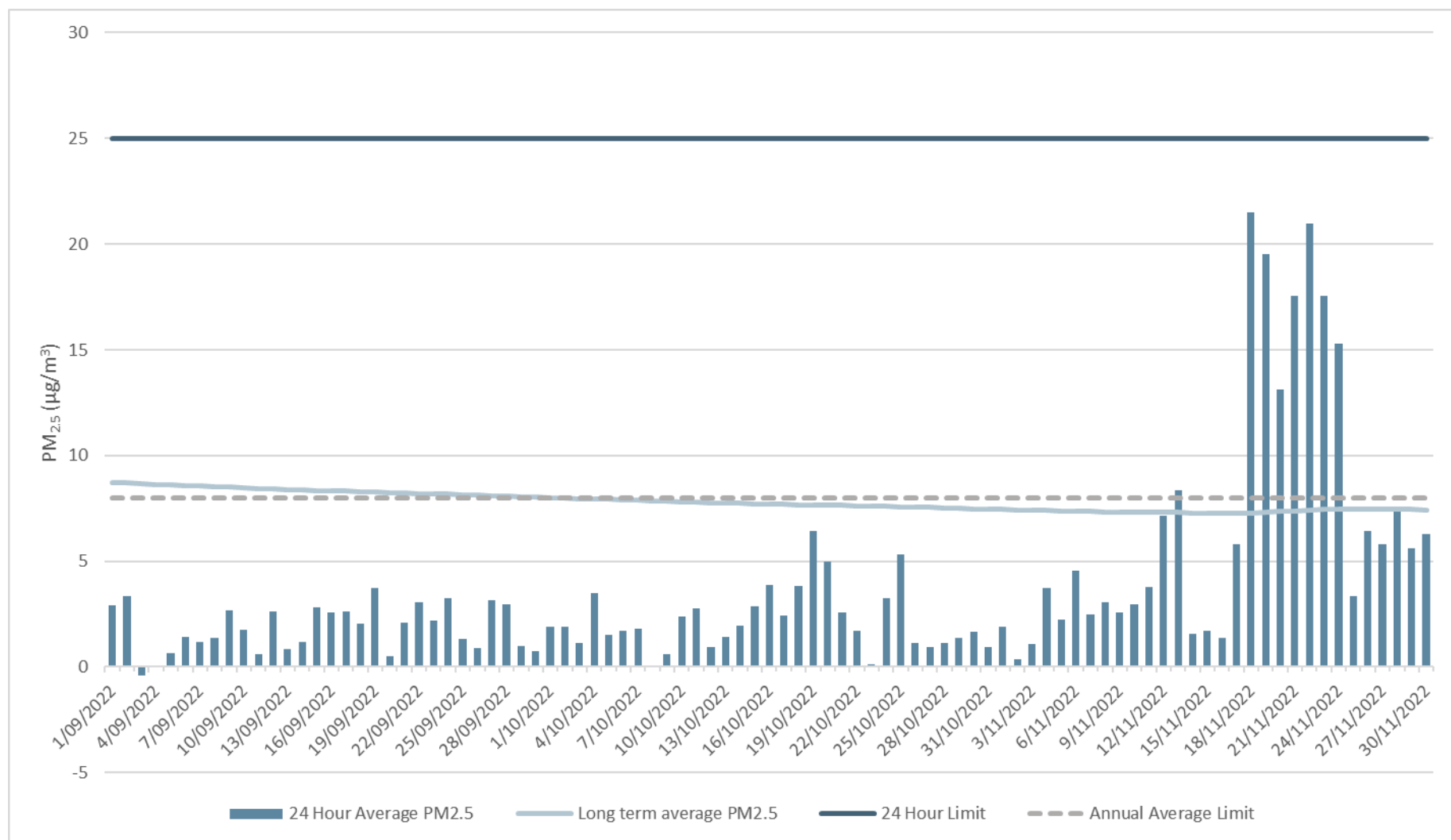
The graph shows 24-hour average and long term (rolling annual average) PM_{2.5} concentrations recorded from 1 September to 30 November 2022 as measured using a TEOM. All were significantly below the 24-hour and annual impact assessment criteria.

PM₁₀ at TEOM-2 (Plashett)



The graph shows 24-hour average and long term (rolling annual average) PM₁₀ concentrations recorded from 1 September to 30 November 2022 as measured using a TEOM. All were significantly below the 24-hour and annual impact assessment criteria.

PM_{2.5} at TEOM-2 (Plashett)



The graph shows 24-hour average and long term (rolling annual average) PM_{2.5} concentrations recorded from 1 September to 30 November 2022 as measured using a TEOM. All were significantly below the 24-hour and annual impact assessment criteria. Small negative values in the range are a function of the TEOM instrument at very low concentrations.

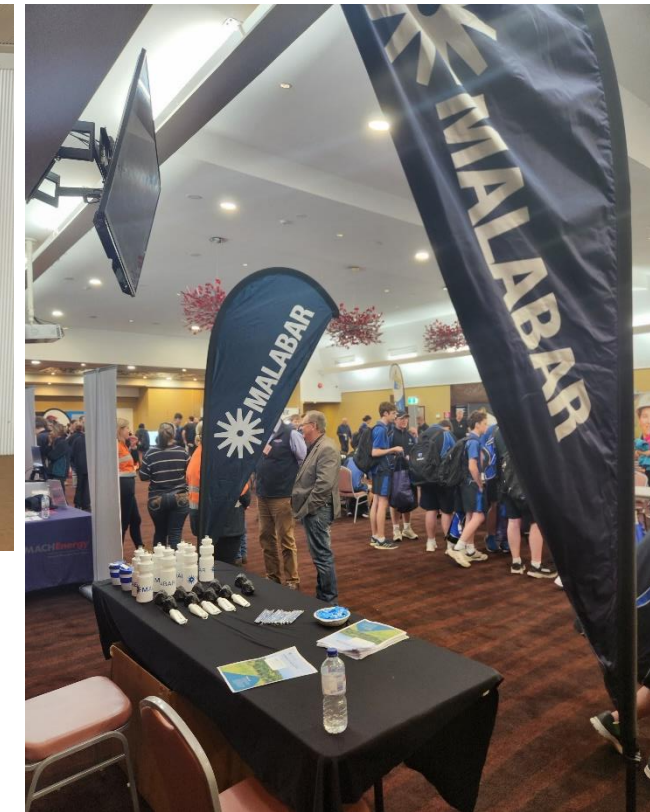
7. Community

Complaints

- No complaints received.

Community Update

- Jerrys Plains School of Arts Hall – supported Denman & District Mends Shed to build two display cabinets.
- Engaged with students from multiple schools including Singleton High and St Catherines Catholic College and members of the public at the Hunter Valley Careers Expo at Muswellbrook RSL.
- Supported Warrior Disability Services in Earn and Return Scheme.



Maxwell Sod Turn – 25th November 2022

- Malabar welcomed a range of local community members, suppliers, Muswellbrook Shire Council, elected representatives and local businesses to the mine to celebrate the commencement of construction.
- Construction of the mine marks a significant milestone for the mine and will generate approximately 250 jobs throughout the construction period.
- Once operational, the mine will generate 350 full-time long-term jobs in addition to many more indirect jobs and stimulus for local businesses and suppliers.



8. Community Questions

Community Questions

- No questions received

9. General Business

Thank you

Appendix- Monitoring Locations

