



Maxwell CCC Presentation
14 September 2022

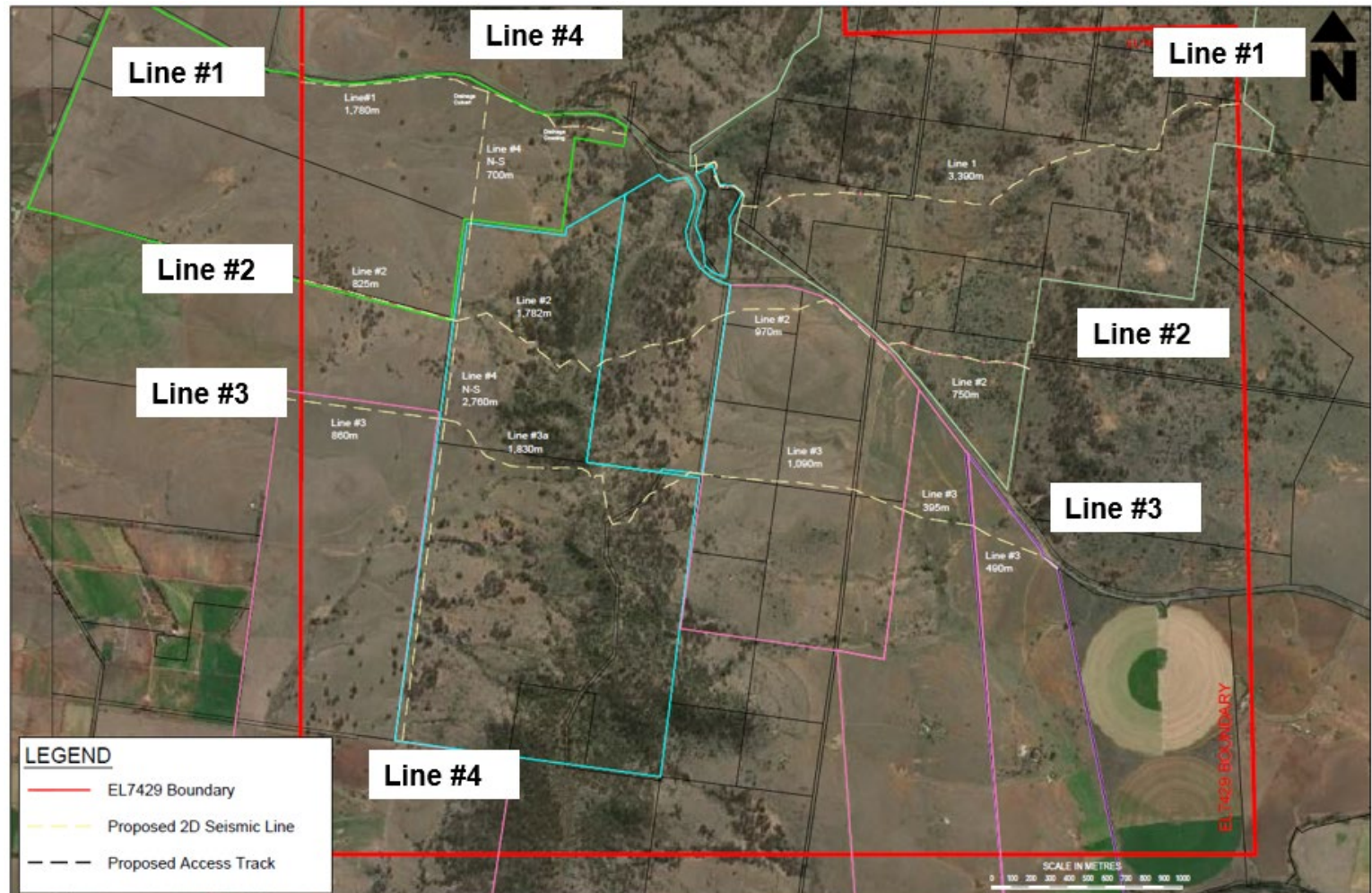
Meeting Agenda

No.	Topic	Who
1	Welcome & Introductions	Chairperson
2	Apologies	Chairperson
3	Declaration of pecuniary interests	Chairperson
4	Business Arising/Action Items	Chairperson
5	Correspondence	Chairperson
6	Update on Maxwell and Spur Hill Projects	James Johnson and Henk Lemmer
7	Environmental Performance	Donna McLaughlin and Alex Newton
8	Community Updates	Alex Newton
9	Community Questions	All
10	General Business	All
11	Next Meeting (7 December 2022)	Chairperson
12	Meeting close	Chairperson

5. Update on the Spur Hill Underground Metallurgical Project

Spur Hill 2D Seismic Lines

- Delays with wet weather
- Next steps:
 - Archaeological and Ecological surveys completed
 - ESF4 form to be submitted
 - Velseis Integrated Seismic Technologies planned to commence once approvals in place



5. Update on the Maxwell Underground Metallurgical Mine

Schedule

Calendar years	2022		2023				2024				2025 onwards		
Site readiness & Construction preparation	■	■											
Construction of Access Rd & MEA		■	■	■	■	■	■						
Construction of Mine Access Portals, Drifts & Vent Shaft			■	■	■	■							
Construction of site infrastructure			■	■	■	■							
Onboarding Workforce				■	■	■	■	■	■	■			
Whynot Seam (B&P Operations)					■	■	■	■	■	■	■	■	■
Development Coal produced to set up for Longwall production							■	■	■	■	■	■	■
Longwall ordered, manufactured, delivered and installed		■	■	■	■	■	■	■	■				
Design & Construction of overland conveyor				■	■	■	■	■	■				
Longwall production										■	■	■	■

Construction update – temporary access road

Temporary Road Complete



Temporary Road Gravel



Construction update – mine entry area (MEA)

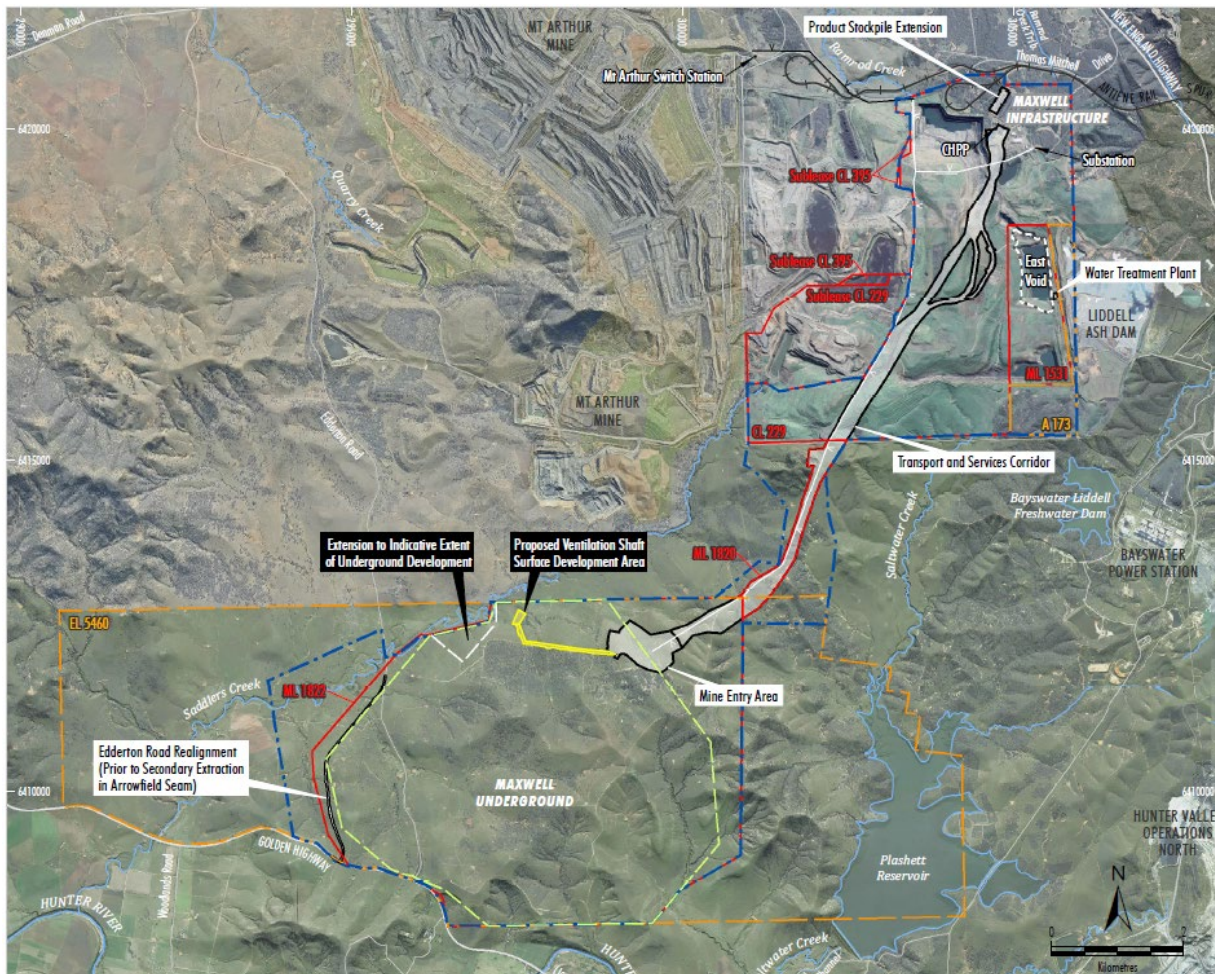
CW Drain

CW Drain Discharge



MEA Dam

MOD2 – Realignment Modification Overview



- The proposed modification is wholly within Development Application Area.
- Key changes are:
 - Re-orientation of longwall panels to better align to geotechnical conditions
 - Commencing production in the Woodlands Hill seam initially with 145m wide longwall panels, and then increasing the longwall to 300m wide. (The EIS commences with a 300m wide longwall at the outset).
 - Relocation of the Woodlands Hill seam ventilation shaft to suit this revised mine layout.

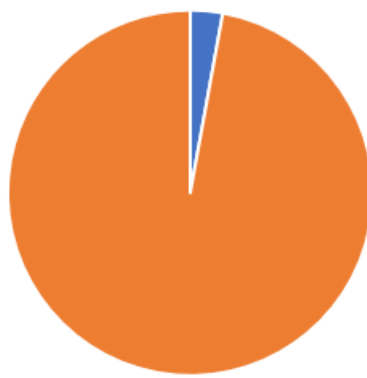
- Approved Maxwell Underground Mine
- Development Application Area
- Indicative Extent of Underground Development
- Indicative Surface Development Area
- CHPP Reject Emplacement Area
- 66 kV Power Supply
- Proposed Modification
- Modified Indicative Extent of Underground Development
- Indicative Modification Surface Survey Area

MOD 2: Realignment Modification Update

- Public exhibition from 2 August to 22 August
- 70 submission received
 - 8 from government agencies
 - 23 from organisations
 - 39 from member of the public
- Issues raised:
 - Subsidence impacts on Hunter River and Saddlers Creek
 - Groundwater predictions
 - Groundwater model update
 - Noise modelling predictions
- Response to submissions submitted to DPE on 2 September.



■ Government Agencies ■ Organisations ■ Public



■ Opposing ■ Support

Task	Tracking
Project Scoping and Approvals Strategy	
Scoping letter	Completed
Confirm proposed disturbance areas	Completed
Consultation	Completed
Specialist Studies	
Subsidence	Completed
Groundwater	Completed
Aboriginal Cultural Heritage	Completed
Biodiversity	Completed
Visual	Completed
Surface water and flooding	Completed
Geomorphology	Completed
Air quality and noise	Completed
Preparation of Modification Report	
Draft Modification Report prepared	Completed
Modification Report reviewed by Malabar	Completed
Pre-lodgement meeting with DPE	Completed
Submit Modification Report to DPE	Completed
Post-Submission Approval Process	
DPE review and confirm adequacy	Completed
Public exhibition	Completed
Response to public exhibition	Completed
DPE assessment of modification and draft development consent	
Determination DPE	

6. Environmental Performance

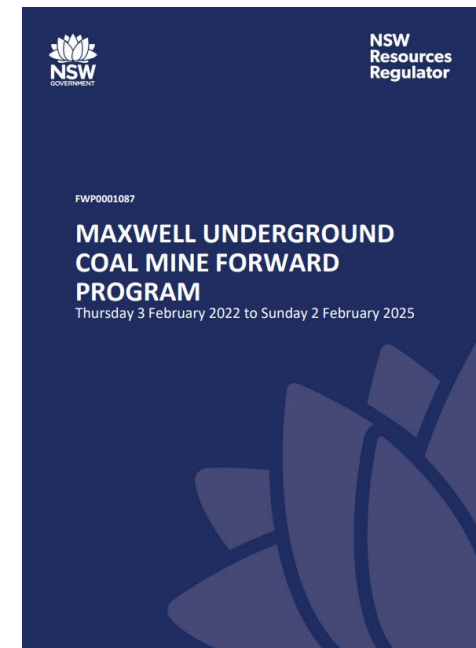
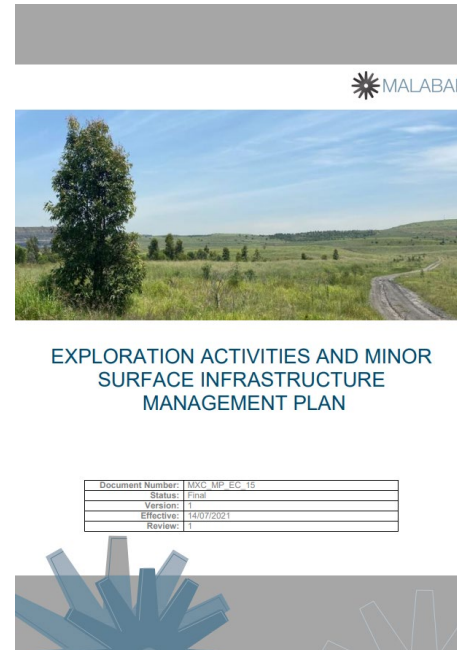
Rehabilitation Update

- Approximately 10ha of ground preparation for tree planting has occurred in past 3 months including ripping, slashing, spraying and kangaroo control.
- Aiming in Spring for 5,000 plants to be planted in rehabilitation areas and 1,000 in the MEA tree screen however ongoing weather conditions impacting plant growth at suppliers.
- Weed control undertaken during July.
- Pig trapping undertaken during July and August.
- Dog and fox baiting undertaken in July with surrounding neighbours.
- Improvement works:
 - Undertaken high density lidar on mine rehabilitation
 - Soil testing undertaken
 - Reviewing drainage designs (contours and drop structures)

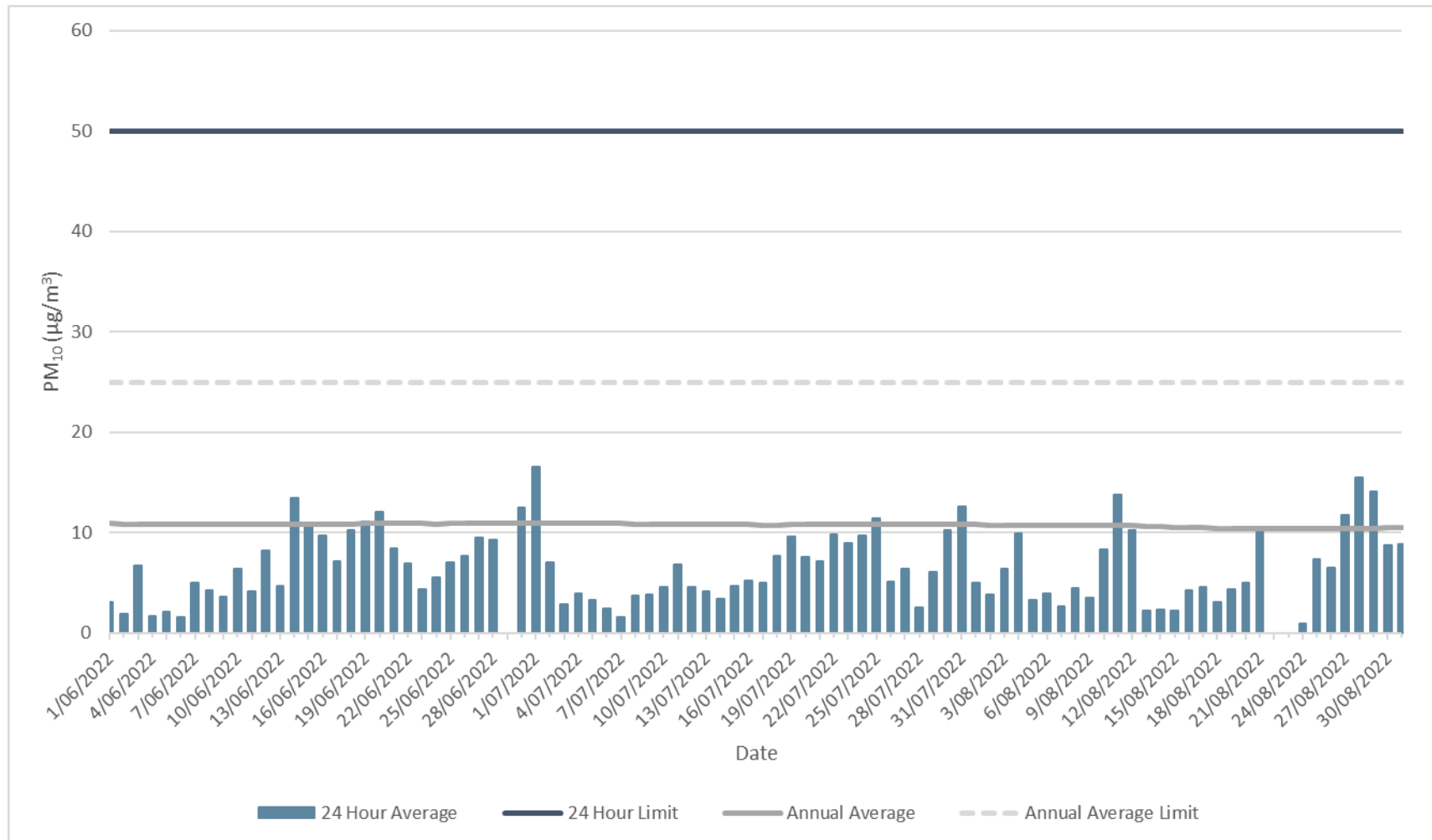


Management Plans and Audits

- Plans completed:
 - Exploration Activities and other Surface Infrastructure Management Plan has been approved.
 - Maxwell Underground Coal Mine Forward Program
- Commenced preparing the Extraction Plan
- As reported during the past two meetings, Development Consent SSD_9526 requires an Independent Environmental Audit (IEA) to be conducted within one year of commencement. The final report was submitted to DPE on 5 July and awaits DPE review comments prior to issue to stakeholders.

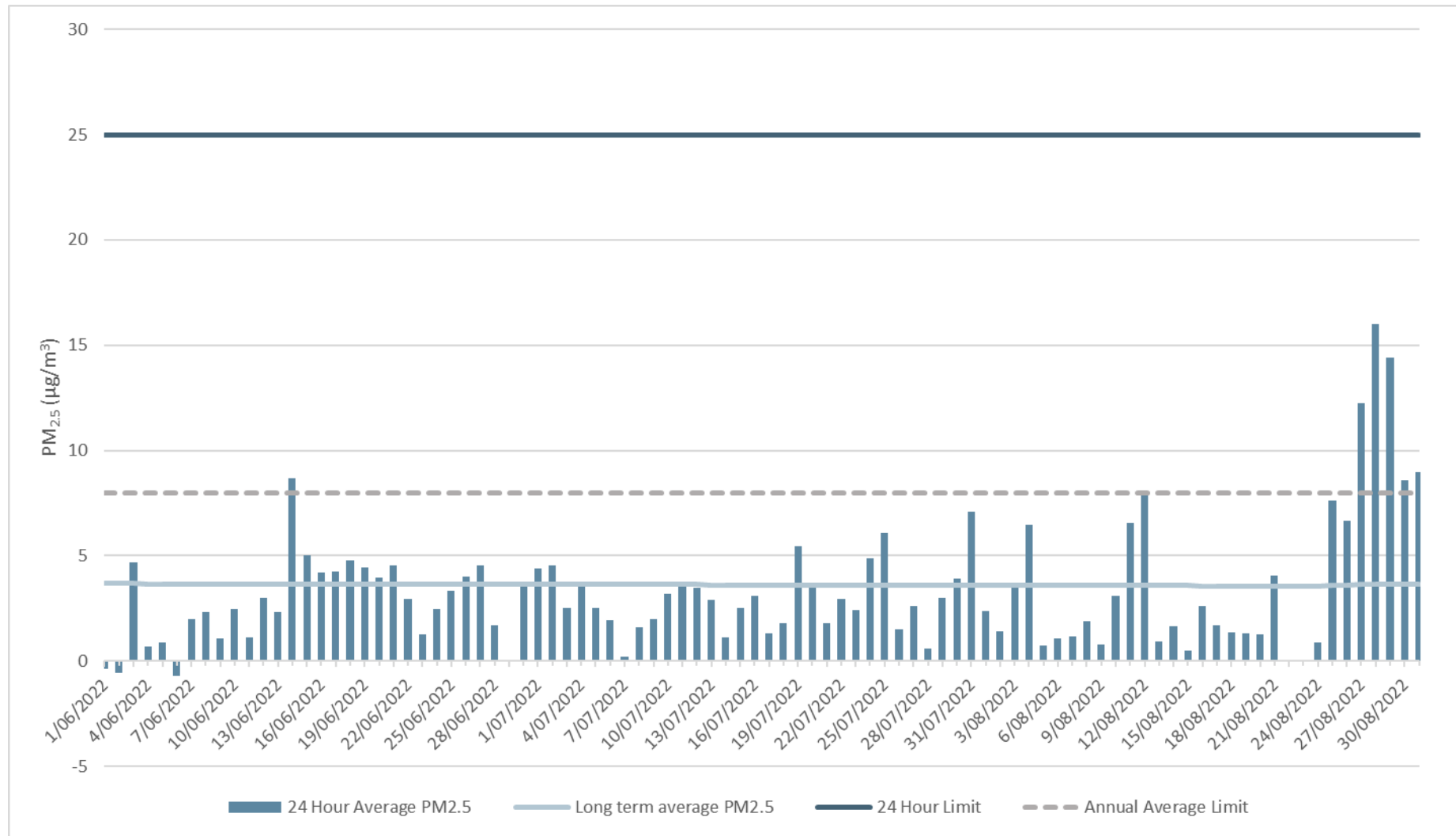


PM₁₀ at TEOM-1 (Maxwell Infrastructure)



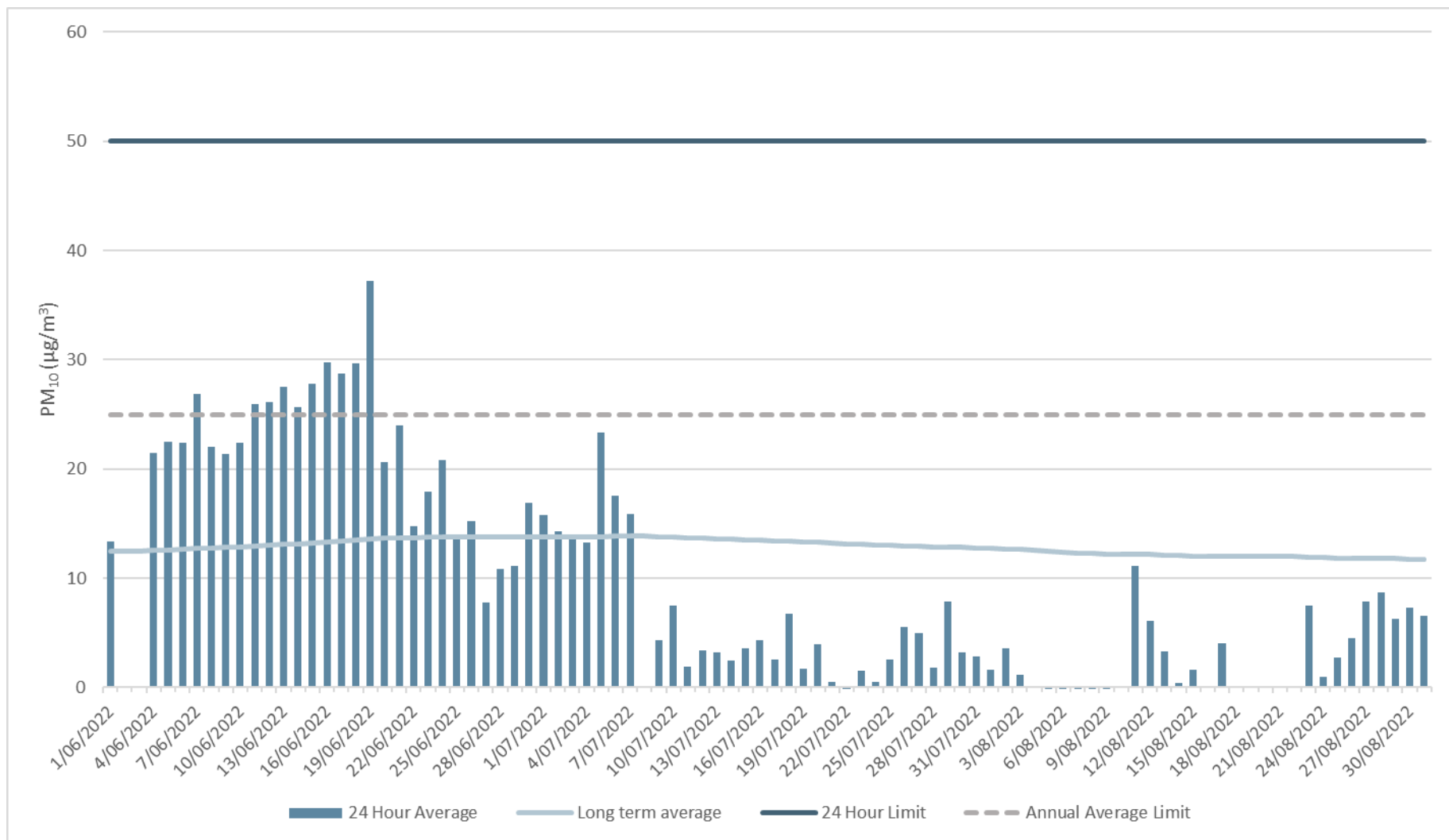
The graph shows 24-hour average and long term (rolling annual average) PM₁₀ concentrations recorded from 1 June to 31 August 2022 as measured using a TEOM. All were significantly below the 24-hour and annual impact assessment criteria.

PM_{2.5} at TEOM-1 (Maxwell Infrastructure)



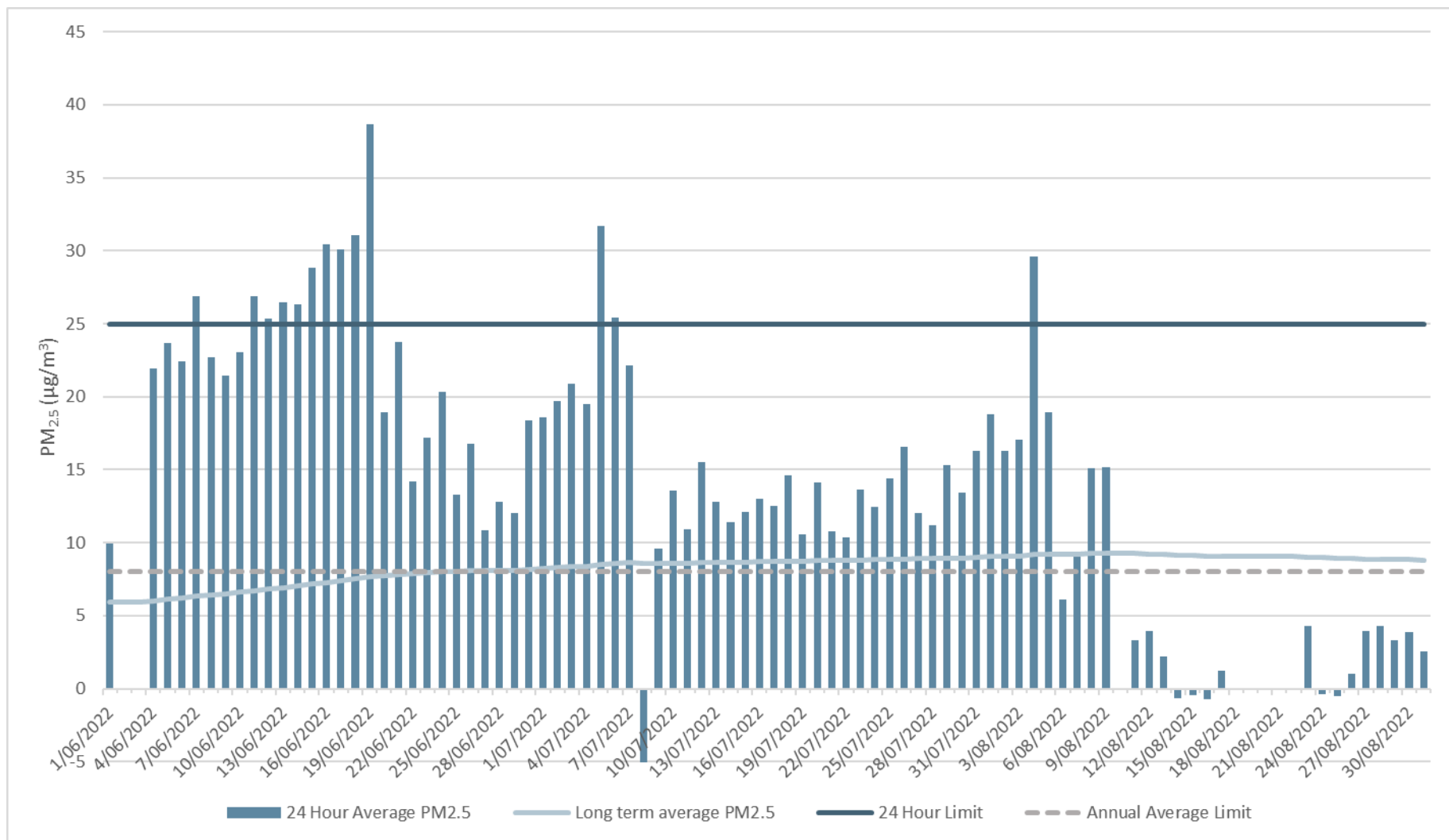
The graph shows 24-hour average and long term (rolling annual average) PM_{2.5} concentrations recorded from 1 June to 31 August 2022 as measured using a TEOM. All were significantly below the 24-hour and annual impact assessment criteria.

PM₁₀ at TEOM-2 (Plashett)



The graph shows 24-hour average and long term (rolling annual average) PM₁₀ concentrations recorded from 1 June to 31 August 2022 as measured using a TEOM. All were significantly below the 24-hour and annual impact assessment criteria.

PM_{2.5} at TEOM-2 (Plashett)



The graph shows 24-hour average and long term (rolling annual average) PM_{2.5} concentrations recorded from 1 June to 31 August 2022 as measured using a TEOM. All were significantly below the 24-hour and annual impact assessment criteria. Small negative values in the range are a function of the TEOM instrument at very low concentrations.

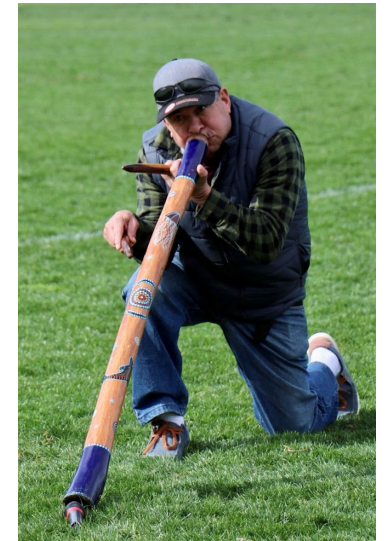
7. Community

Complaints

- No complaints received.

Community Update

- Site NAIDOC BBQ provided by Blackrock Industries
- Sponsored the Muswellbrook High School NAIDOC league tag event (combined with the local primary schools)
 - BBQ
 - Dancers and Digeridoo Player
 - Painting
 - Free drink bottles



8. Community Questions

Community Questions

- No questions received

9. General Business

Thank you

Appendix- Monitoring Locations

