



Maxwell CCC Presentation
15 June 2022

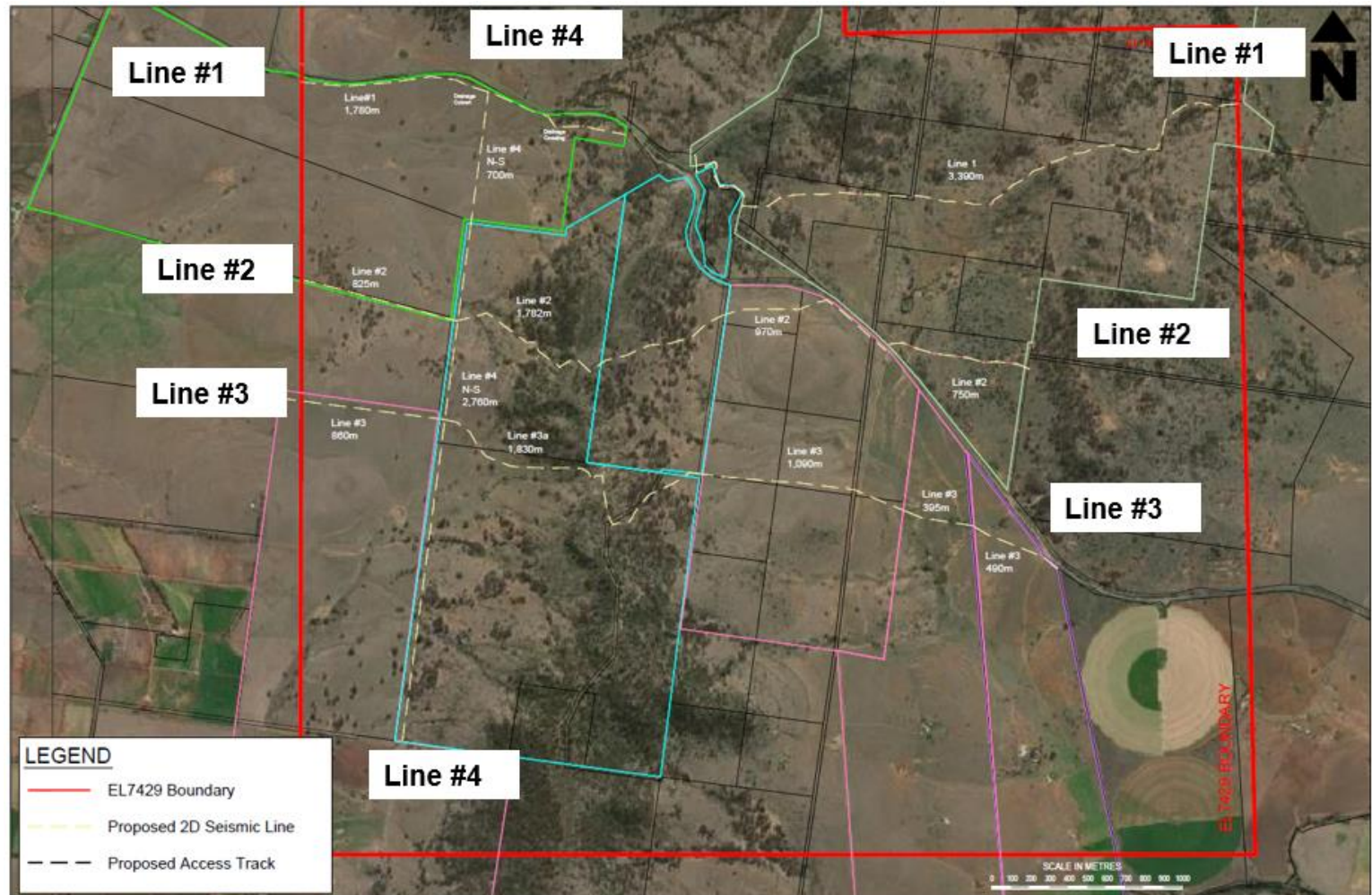
Meeting Agenda

No.	Topic	Who
1	Welcome – attendees and apologies	Chairperson
2	Declaration of pecuniary interests	Chairperson
3	Business Arising/Action Items	Chairperson
4	Correspondence	Chairperson
5	Update on Maxwell and Spur Hill Projects	James Johnson and Henk Lemmer
6	Environmental Performance	Alex Newton
7	Community Updates	Alex Newton
8	Community Questions	All
9	General Business	All
10	Next Meeting (14 September 2022)	Chairperson
11	Meeting close	Chairperson

5. Update on the Spur Hill Underground Metallurgical Project

Spur Hill 2D Seismic Lines

- Next steps:
 - Archaeological and Ecological surveys completed
 - ESF4 form to be submitted
 - Velseis Integrated Seismic Technologies planned to commence once approvals in place

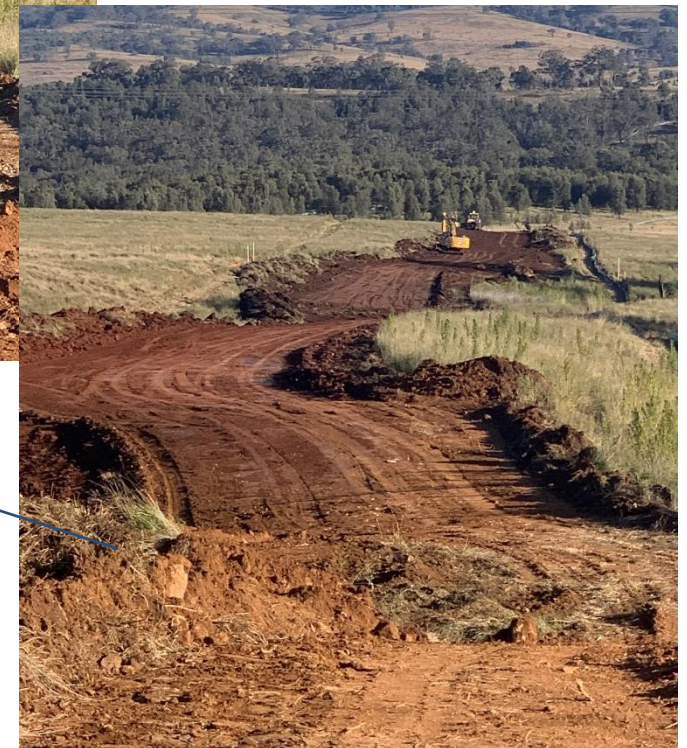
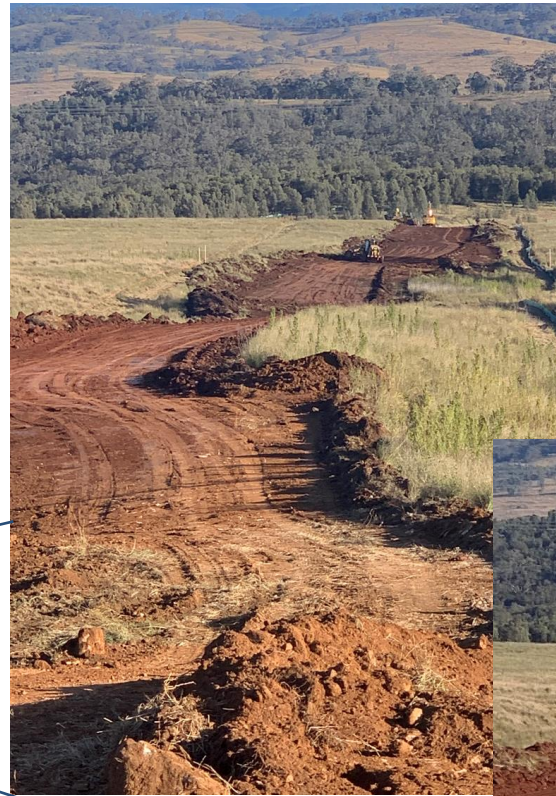
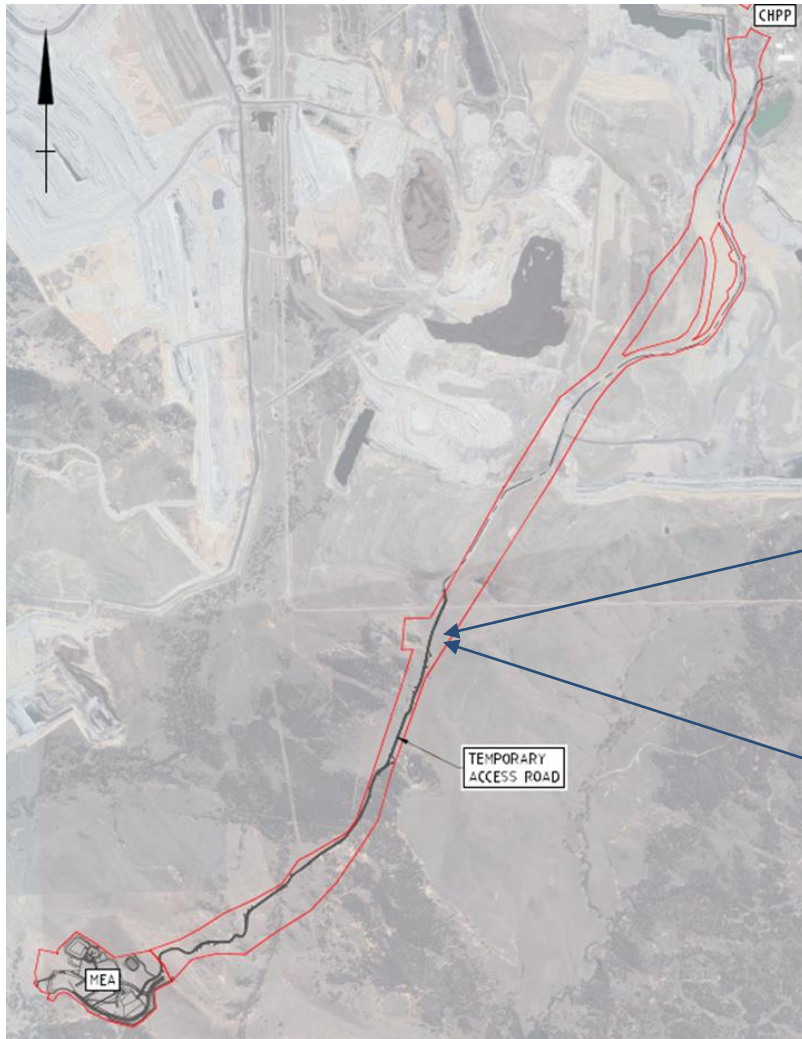


5. Update on the Maxwell Underground Metallurgical Mine

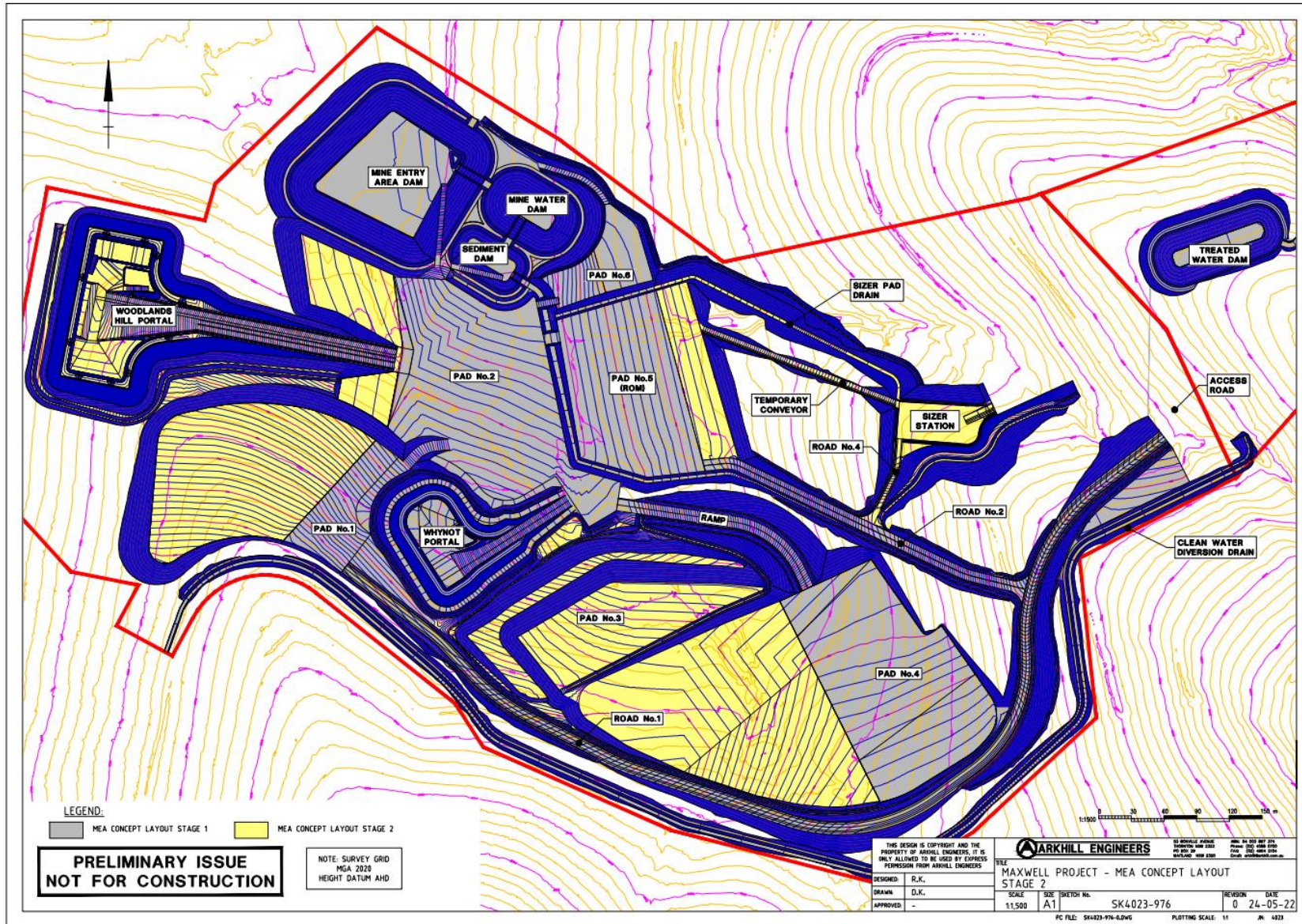
Schedule

Calendar years	2021				2022				2023				2024				2025 onwards			
Mining Leases & Management Plans	█	█	█	█																
Site readiness & Construction preparation				█	█	█														
Construction of Access Rd & MEA						█	█	█	█	█	█	█								
Construction of Mine Access Portals, Drifts & Vent Shaft							█	█	█	█	█									
Construction of site infrastructure							█	█	█	█	█									
Onboarding Workforce										█	█	█	█	█	█	█				
B&P Operations											█	█	█	█	█	█	█	█	█	█
Development Coal produced to set up for Longwall production													█	█	█	█	█	█	█	█
Longwall ordered, manufactured, delivered and installed							█	█	█	█	█	█	█	█	█					
Design & Construction of overland conveyor										█	█	█	█	█	█					
Longwall production																	█	█	█	█

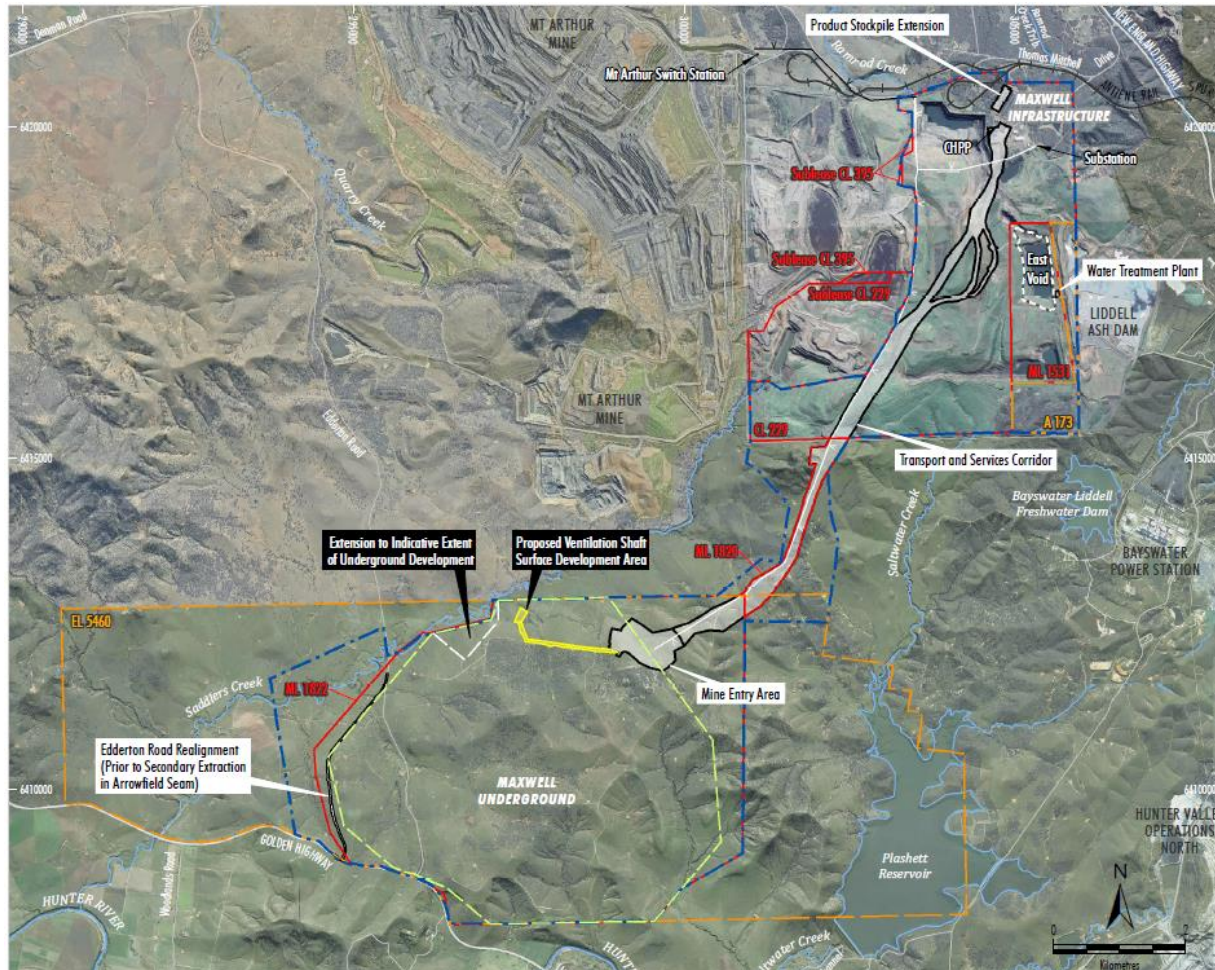
Construction update – temporary access road



Construction update – mine entry area (MEA)



MOD2 – Update



- The proposed modification is wholly within Development Application Area.
- Key changes are:
 - Re-orientation of longwall panels to better align to geotechnical conditions
 - Commencing production in the Woodlands Hill seam initially with 145m wide longwall panels, and then increasing the longwall to 300m wide. (The EIS commences with a 300m wide longwall at the outset).
 - Relocation of the Woodlands Hill seam ventilation shaft to suit this revised mine layout.



MOD2 – Update

- Early consultation with horse studs, MSC and CCC.
- Statutory ACHA consultation process completed.
- Specialist studies are all in the final review stage.
- Submission by the end of June.
- Approval required in Q4 2022 to meet design, procurement and construction schedule.

Task	Tracking
Project Scoping and Approvals Strategy	
Scoping letter and meeting	Complete
Confirm proposed disturbance areas	Complete
Consultation	Ongoing
Specialist Studies	
Subsidence	Final Review
Groundwater	Final Review
Aboriginal Cultural Heritage	Final Review
Biodiversity	Final Review
Visual	Final Review
Surface water and flooding	Final Review
Geomorphology	Final Review
Air quality and noise	Final Review
Preparation of Modification Report	
Draft Modification Report prepared	Final Review
Pre-lodgement meeting with DPE	June 2022
Submit Modification Report to DPE	June 2022
Post-Submission Approval Process	
DPE review and confirm adequacy	
Public exhibition	
Response to public exhibition	
DPE assessment of modification	
Modification approved by DPE	
EPBC approval varied	
Update relevant environmental plans	

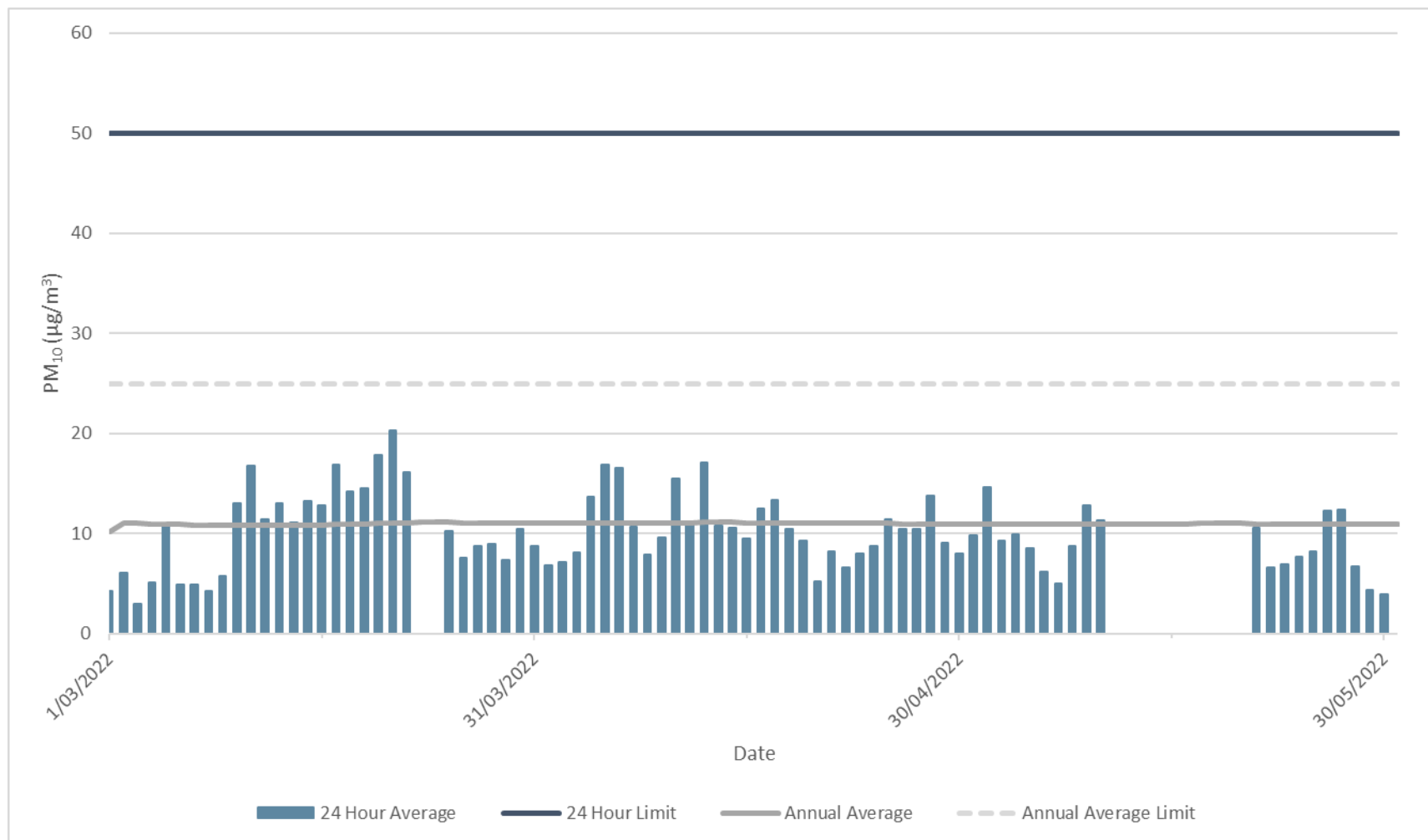
6. Environmental Performance

Rehabilitation Update

- 5000 trees were planted in May, a shortfall on expected numbers due to weather conditions impacting plant growth. Infill planting will occur in Spring.
- Follow up tree watering planned.
- 160 trees planted at the Mine Area Entry Visual screen.
- Weed spraying continued on site.
- Wild dog and fox baiting program commenced in May across site and Plashett property.

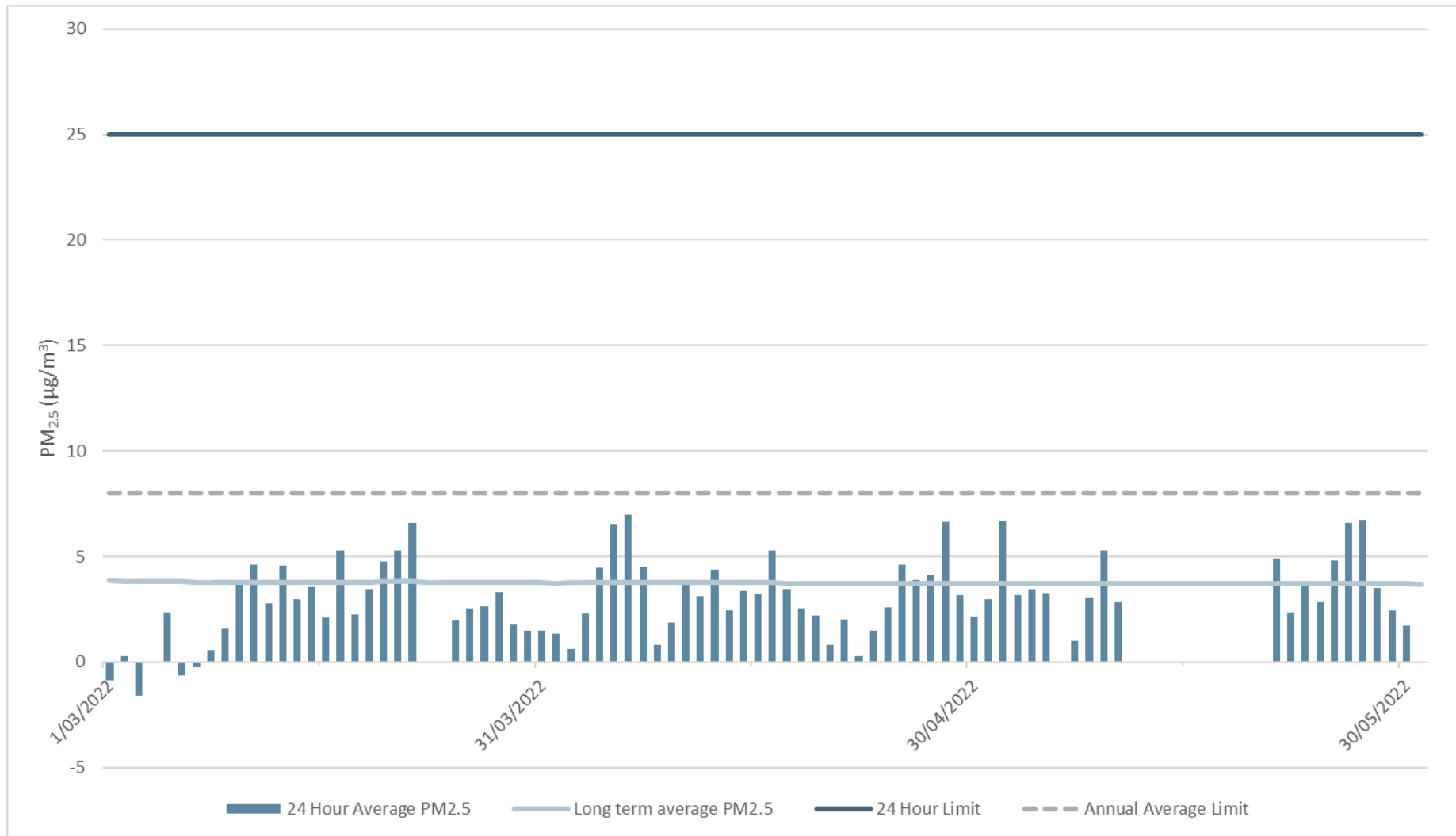


PM₁₀ at TEOM-1 (Maxwell Infrastructure)



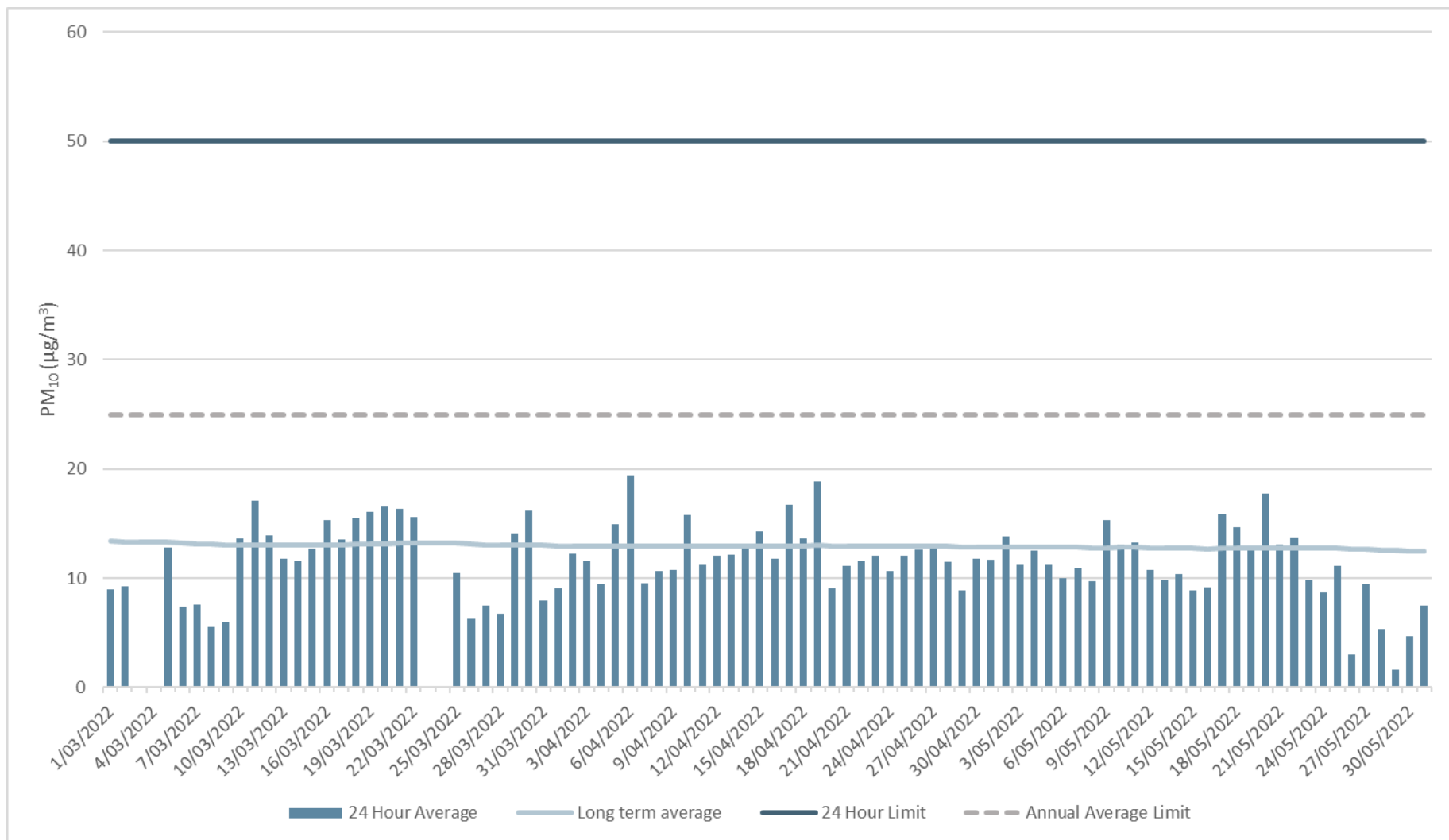
The graph shows 24-hour average and long term (rolling annual average) PM₁₀ concentrations recorded from 1 December to 28 February 2022 as measured using a TEOM. All were significantly below the 24-hour and annual impact assessment criteria.

PM_{2.5} at TEOM-1 (Maxwell Infrastructure)



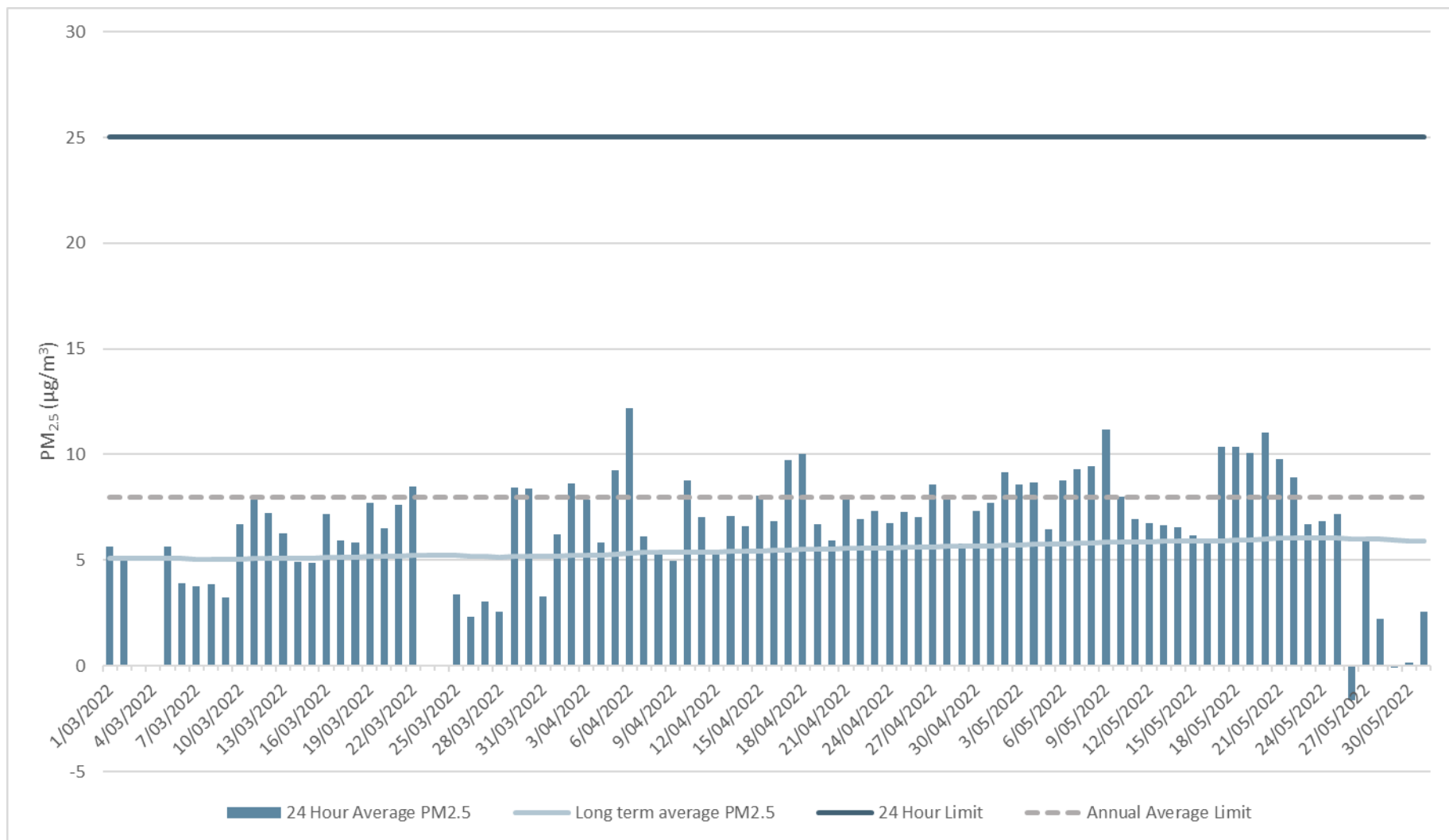
The graph shows 24-hour average and long term (rolling annual average) PM_{2.5} concentrations recorded from 1 March to 31 May 2022 as measured using a TEOM. All were significantly below the 24-hour and annual impact assessment criteria.

PM₁₀ at TEOM-2 (Plashett)



The graph shows 24-hour average and long term (rolling annual average) PM₁₀ concentrations recorded from 1 March to 31 May 2022 as measured using a TEOM. All were significantly below the 24-hour and annual impact assessment criteria.

PM_{2.5} at TEOM-2 (Plashett)



The graph shows 24-hour average and long term (rolling annual average) PM_{2.5} concentrations recorded from 1 March to 31 May 2022 as measured using a TEOM. All were significantly below the 24-hour and annual impact assessment criteria. The values in the range -1.0 to -4µg/m³ in late May are a function of the TEOM instrument at very low concentrations.

7. Independent Environmental Audit

Independent Environmental Audit

As reported during the last meeting, Development Consent SSD_9526 requires an Independent Environmental Audit (IEA) to be conducted within one year of commencement.

The NSW Department of Planning and Environment (DPE) has requested in addition to the conditions to focus the IEA scope on a review and assessment of Aboriginal heritage, air quality, biodiversity, rehabilitation and social impacts.

Consultation on the scope has also occurred with DPE Biodiversity and Conservation Division, DPE Water, NSW Environment Protection Authority, Heritage NSW, Regional NSW Mining, Exploration & Geoscience, Muswellbrook Shire Council and Natural Resource Access Regulator.

The field component of the audit was conducted by consultants approved by DPE over 3 days from 10–12 May.

No unknown non-conformances have been identified to date. Some opportunities for improvement were identified.

The draft report is due from the consultants on 17 June. The final report is due to DPE by 5 July.

7. Community

Complaints

- No complaints received

Community Update

- Upper Hunter Show
 - Malabar sponsored the Cattle events, including the Supreme Exhibit and the Interbreed Grand Champion Bull and Heifer.
 - Malabar donated 5 family passes to local families including goody bags, and 5 family passes were donated to Muswellbrook South Primary School.



Community Update

Jerry's Plain Cup

- The Jerry's Plains Cup Race Day was held in April at the Muswellbrook race club with Malabar as the major sponsor.
- This event kicked off the Jerry's Plains Bicentennial events held from 29 April to 2 May.
- The sponsorship package included a two-course lunch held at the Silks Function Centre. Malabar invited 34 guests from the local community to attend the race day with guests including
 - Community members
 - Local businesses
 - Local charities
- Winner of the Jerrys Plains Cup was Mercury (Bailey Wheeler for Richard Litt).



Community Update

- Denman Swimming Club
 - Malabar donated financially towards the cost of the annual presentation night; the event catered for 79 members.
- Westpac Rescue Helicopter
 - Malabar donated \$500 to the Westpac Rescue Helicopter who provide an invaluable service to the community.



Community Information Sessions

Community Information Sessions were held at the Muswellbrook Library seminar room on:

- Friday 13 May 2022
- Wednesday 18 May 2022
- Friday 20 May 2022

The community were updated on the Maxwell Underground Mine and commencement of construction activities.



8. Community Questions

Community Questions

- No questions received

9. General Business

Thank you

