



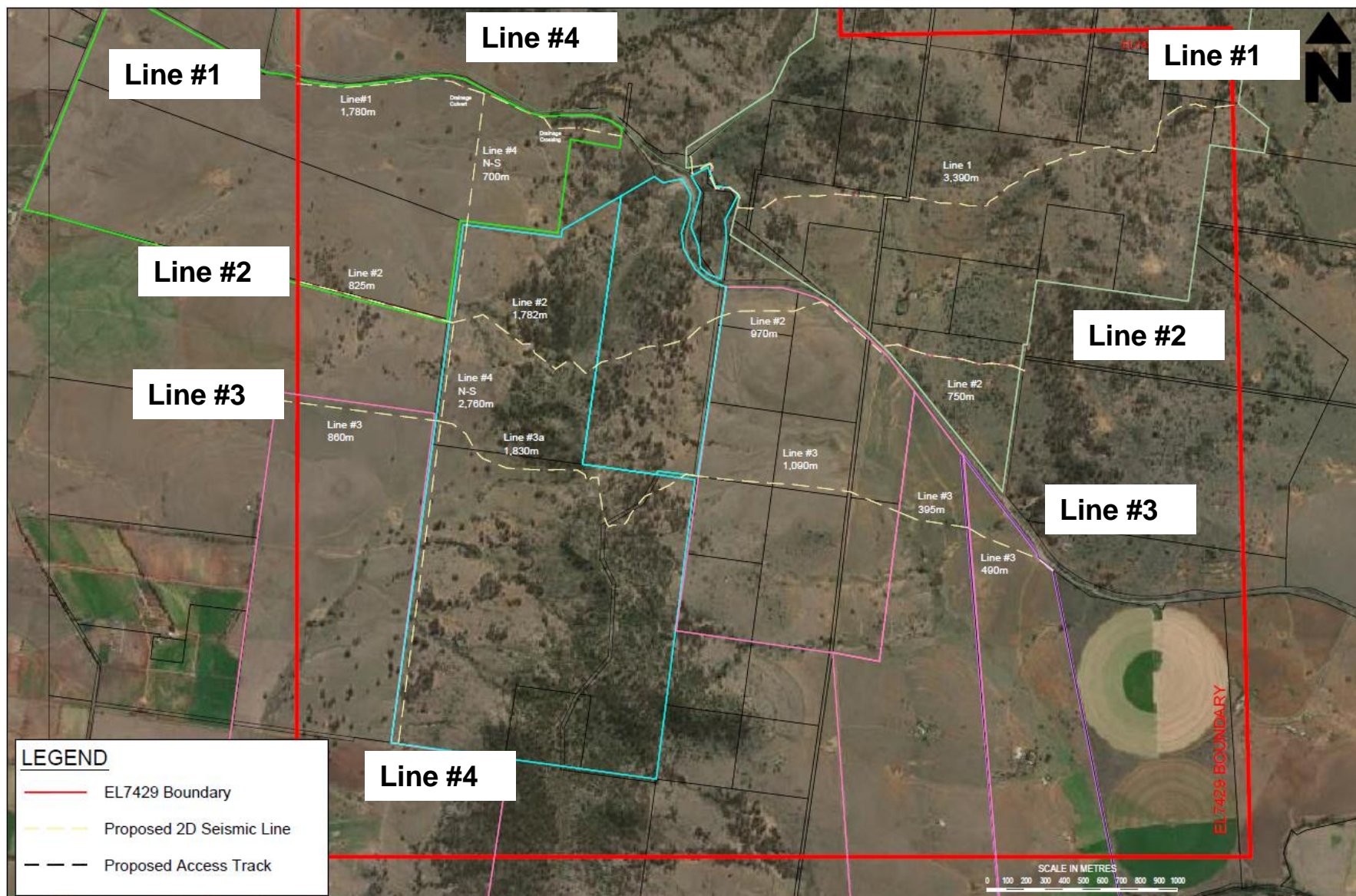
Maxwell CCC Presentation
16 March 2022

Meeting Agenda

No.	Topic	Who
1	Welcome – attendees and apologies	Chairperson
2	Declaration of pecuniary interests	Chairperson
3	Business Arising/Action Items	Chairperson
4	Correspondence	Chairperson
5	Update on Spur Hill and Maxwell	James Johnson and Donna McLaughlin
6	Environmental Performance	Donna McLaughlin and Teresa Coleman
7	Independent Environmental Audit	Donna McLaughlin
8	Community Updates	Teresa Coleman
9	Community Questions	All
10	General Business	All
11	Next Meeting (15 June 2022)	Chairperson
12	Meeting close	Chairperson

5. Update on the Spur Hill Underground Metallurgical Project

Spur Hill 2D Seismic Lines

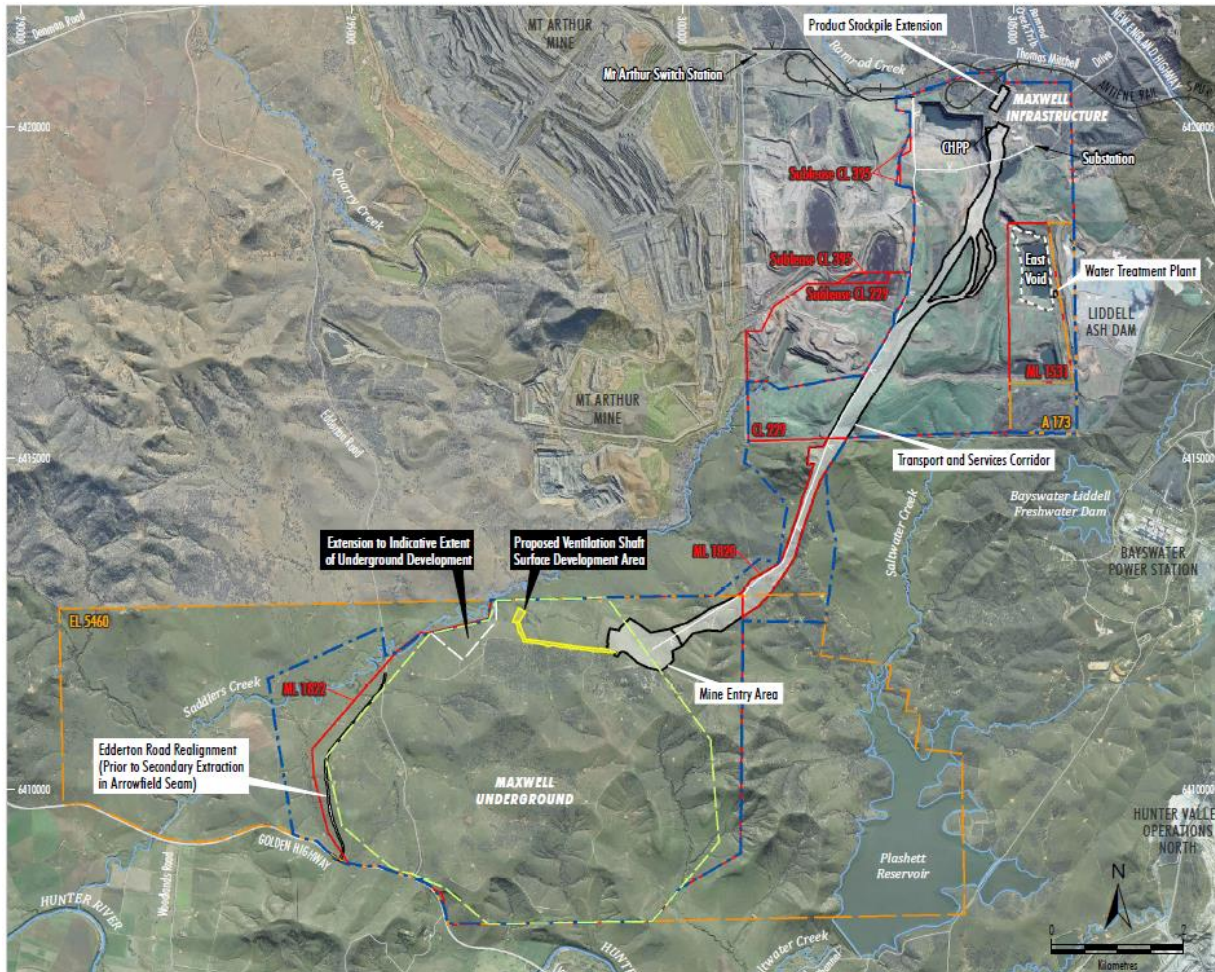


Spur Hill 2D Seismic Lines

- 4 Lines Proposed for a total of 17.5klm
 - East West Line #1: 5.2klm
 - East West Line #2: 4.2klm
 - East West Line #3: 4.7klm
 - North South Line #4: 3.5klm
- Site access and line routes confirmed with landholders.
- Proposed line inspections and optimisation undertaken with Geophysical Resources and Services.
- Delays due to wet weather.
- Next steps:
 - Archaeological and Ecological surveys to be completed to allow submission of ESF4 Form
 - Velseis Integrated Seismic Technologies planned to commence once approvals in place

5. Update on the Maxwell Underground Metallurgical Mine

MOD2 - Overview



- The proposed modification is wholly within Development Application Area.
- Key changes are:
 - Re-orientation of longwall panels to better align to geotechnical conditions
 - Commencing production in the Woodlands Hill seam initially with 145m wide longwall panels, and then increasing the longwall to 300m wide. (The EIS commences with a 300m wide longwall at the outset).
 - Relocation of the Woodlands Hill seam ventilation shaft to suit this revised mine layout.

- Approved Maxwell Underground Mine
- Development Application Area
- Indicative Extent of Underground Development
- Indicative Surface Development Area
- CHPP Reject Emplacement Area
- 66 kV Power Supply
- Proposed Modification
- Modified Indicative Extent of Underground Development
- Indicative Modification Surface Survey Area

MOD2 – Overview

Approved



Proposed



Schedule

Calendar years	2021				2022				2023				2024				2025 onwards			
Mining Leases & Management Plans	■	■	■	■																
Site readiness & Construction preparation				■	■	■	■													
Construction of Access Rd & MEA						■	■	■	■	■	■	■								
Construction of Mine Access Portals, Drifts & Vent Shaft							■	■	■	■	■	■								
Construction of site infrastructure							■	■	■	■	■	■								
Onboarding Workforce										■	■	■	■	■	■	■				
Development Coal produced to set up for Longwall production													■	■	■	■	■	■	■	■
Longwall ordered, manufactured, delivered and installed						■	■	■	■	■	■	■	■	■	■	■				
Design & Construction of overland conveyor										■	■	■	■	■	■	■				
Longwall production																	■	■	■	■

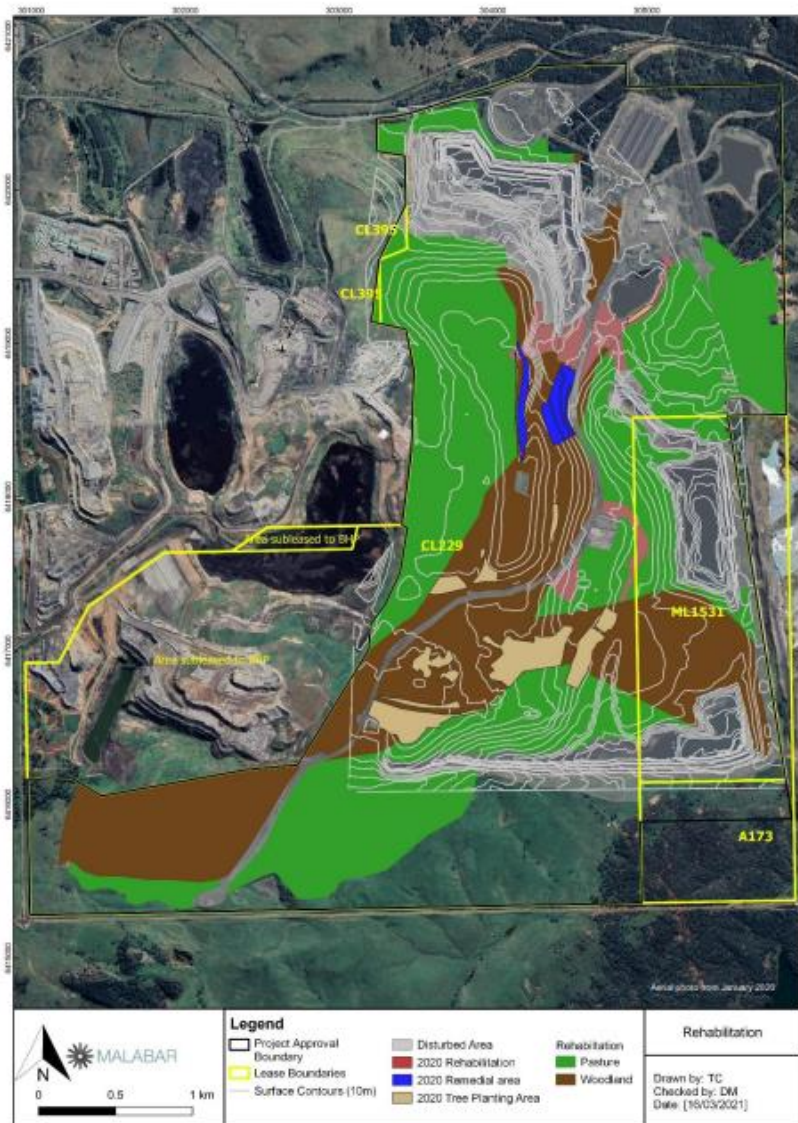
6. Environmental Performance

Rehabilitation Update

- Autumn tree bed preparations are commencing mid March.
- Approximately 13,000 trees to be planted late April.
- Weed spraying continued on site.
- Annual ecological monitoring completed.



Landform Evolution Modelling Update



- Section 240 Notice:
 - To assess the long-term erosional stability of mine rehabilitation
 - To assess the surface water management structures.
- Maxwell submitted a report to the Resources Regulator on the 28 January 2022
- Feedback received from Resources Regulator
- Maxwell to provide further information by 1 April 2022.

Cattle Grazing Trial



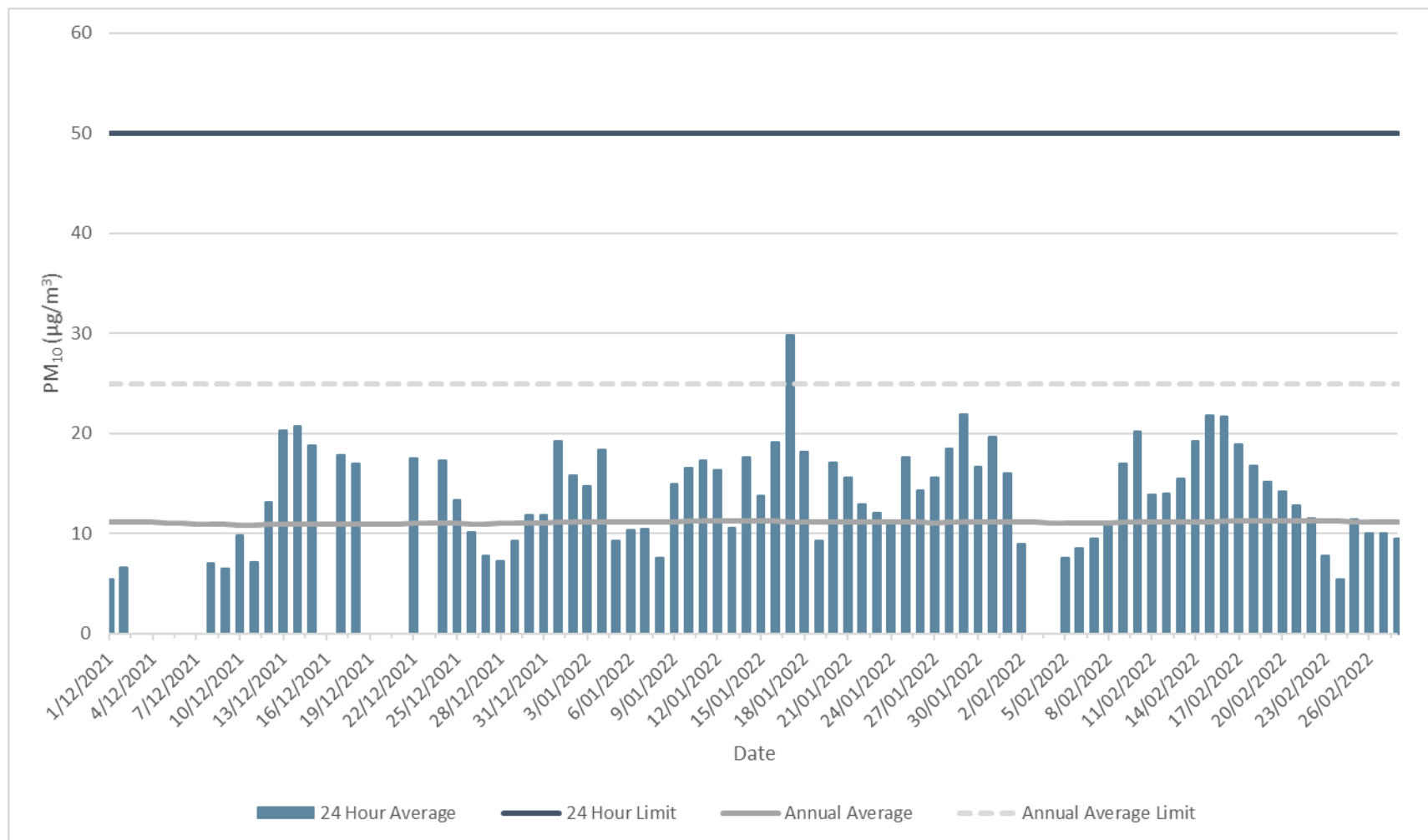
- Continuation of cattle trial with 96 head of cattle on rehabilitated pasture paddocks.
- Cattle have averaged 70kg weight gain per month, over 7-month duration.
- Lightweight cattle to be sold to feedlot market in March.

Recent Rainfall Events

- On Tuesday 8 March 2022, the DC2 Dam and the Rail Loop Dam started to overflow following excessive rainfall on the day of and in the days preceding the incident.
- Both dams had pumping infrastructure operating at the time of the event to transfer water to other raw water storages on the mine site.
- Maxwell reported the event to the relevant agencies and downstream neighbours.
- Water quality samples were collected from both dams. The water quality results from the incident indicate that the water discharged from the dams was within or less than the guidelines values.
- Detailed incident investigation reports have been submitted to EPA and DPE.

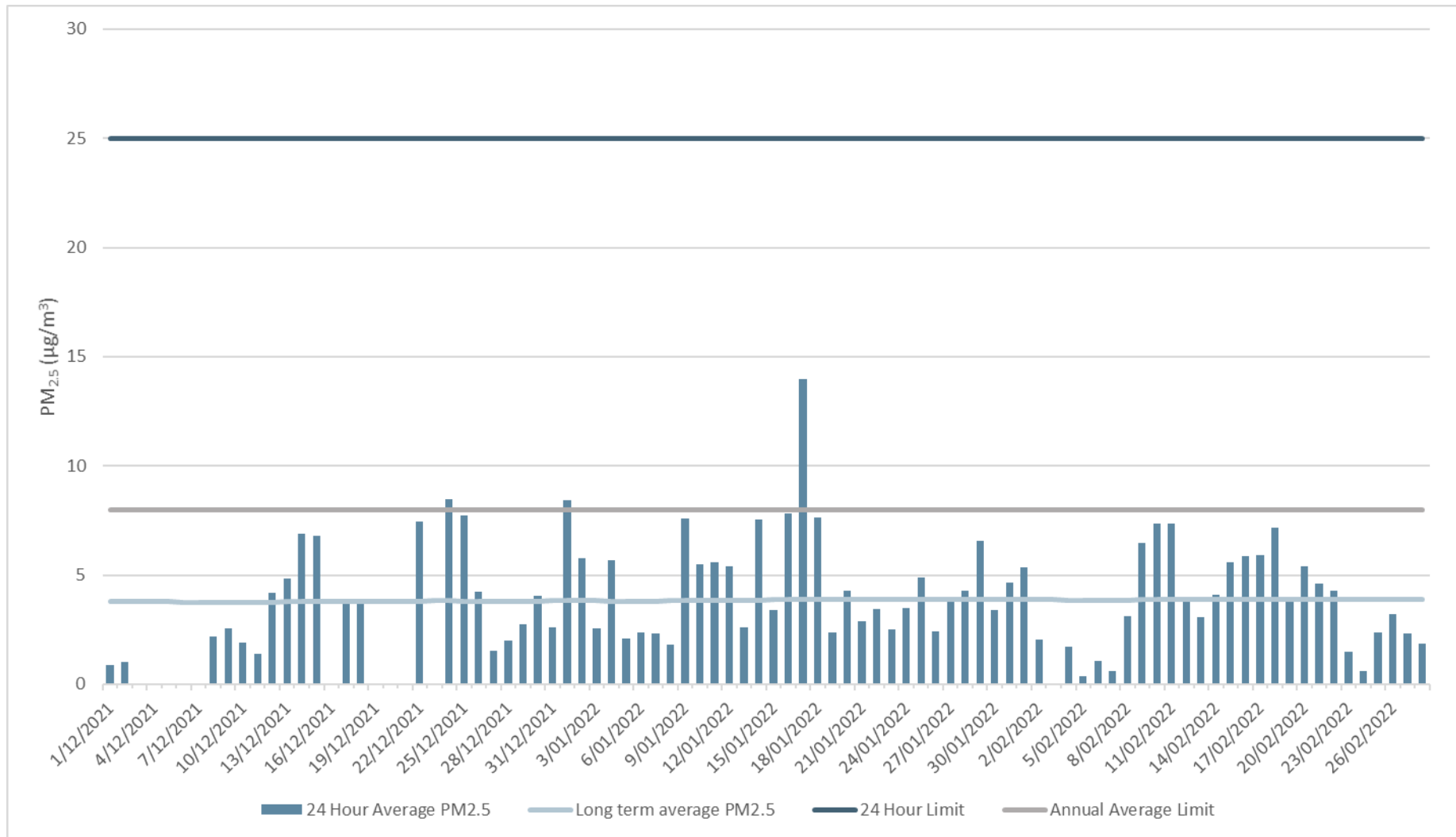
Date	Rainfall (mm)
28/02/2022	0.0
1/03/2022	1.4
2/03/2022	1.6
3/03/2022	11.6
4/03/2022	14.0
5/03/2022	9.8
6/03/2022	31.8
7/03/2022	53.0
8/03/2022	90.8
9/03/2022	41.6
10/03/2022	0.2
TOTAL	255.8

PM₁₀ at TEOM-1 (Maxwell Infrastructure)



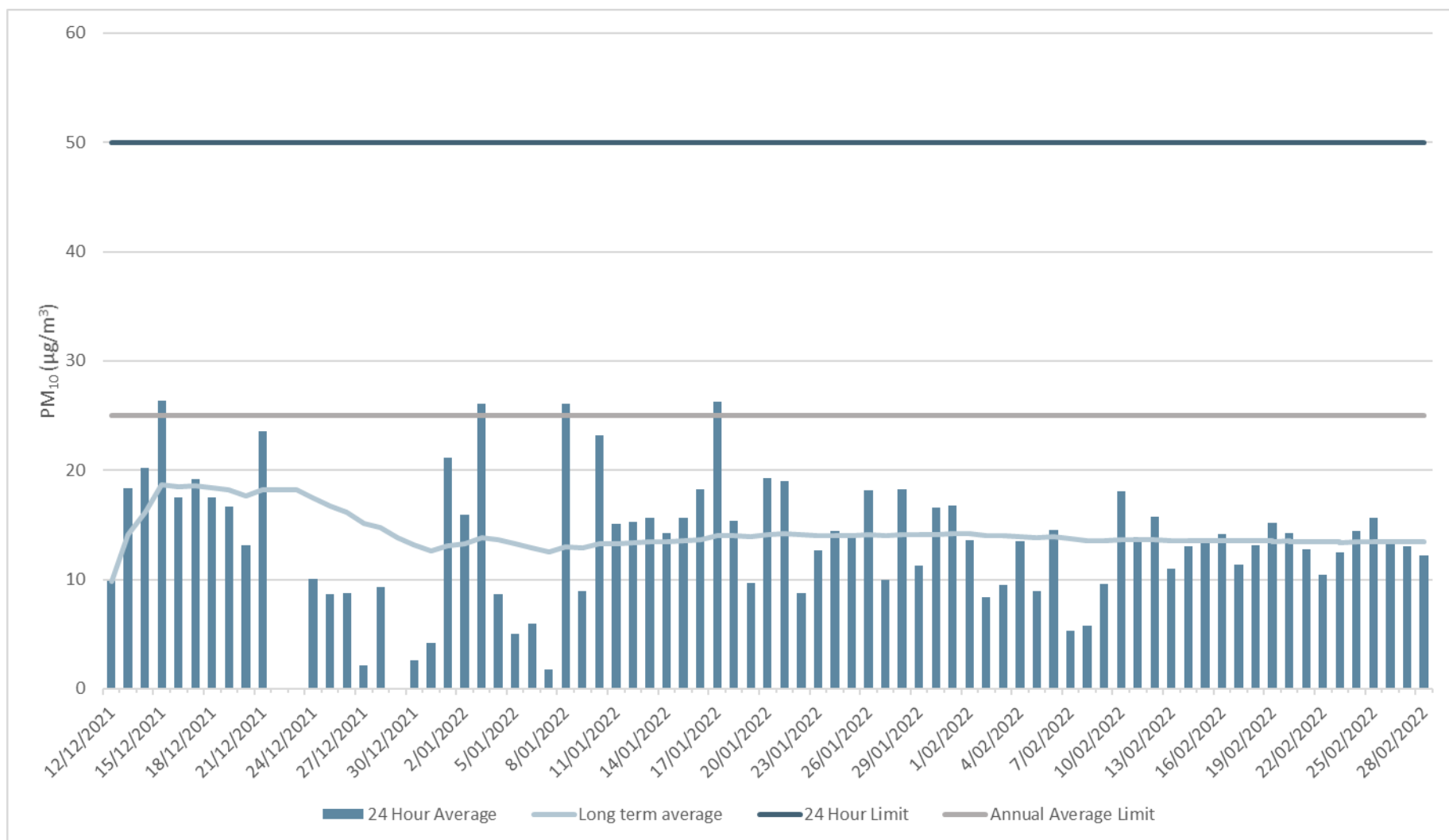
The graph shows 24-hour average and long term (rolling annual average) PM₁₀ concentrations recorded from 1 December to 28 February 2022 as measured using a TEOM. All were significantly below the 24-hour and annual impact assessment criteria.

PM_{2.5} at TEOM-1 (Maxwell Infrastructure)



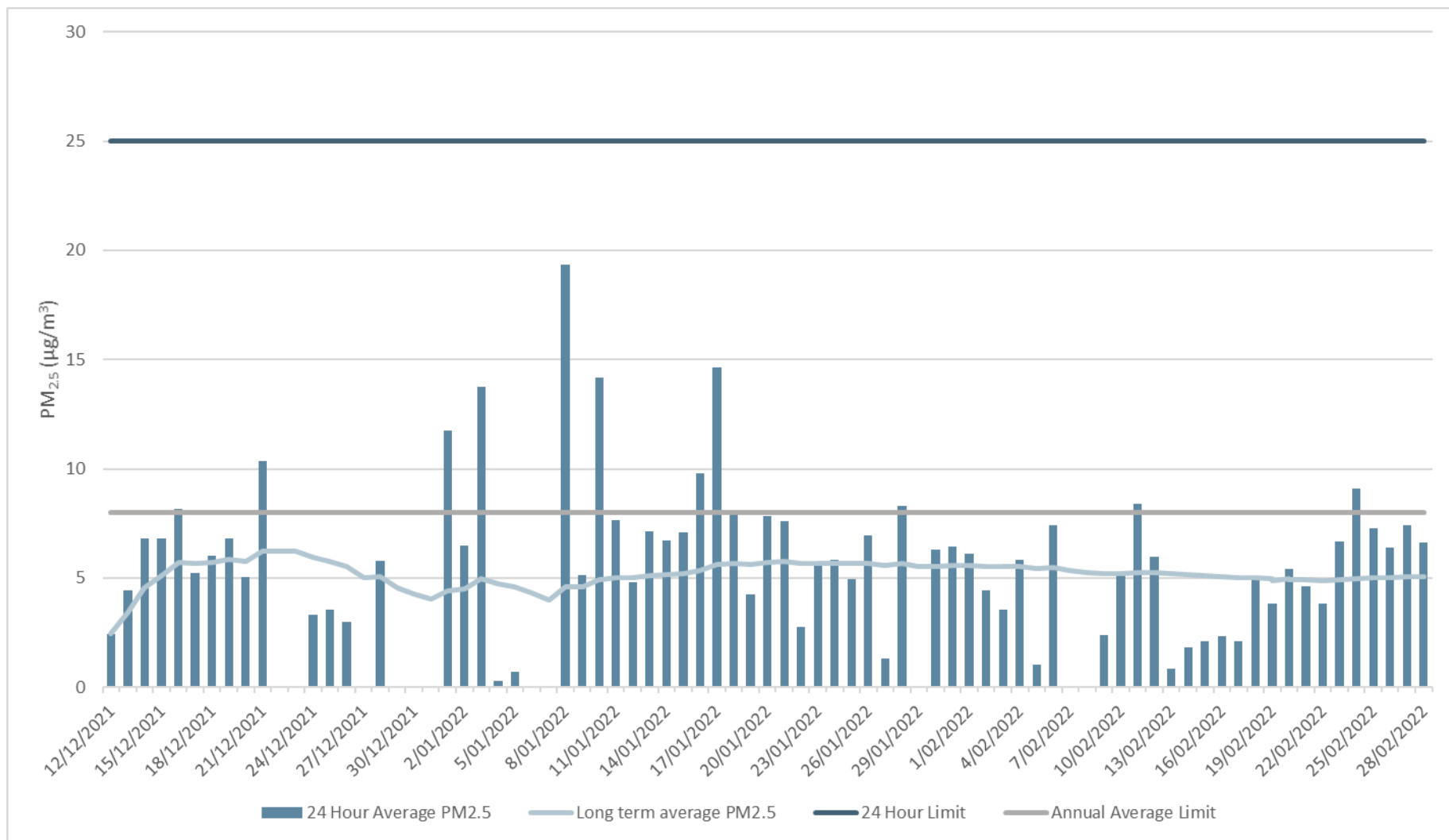
The graph shows 24-hour average and long term (rolling annual average) PM_{2.5} concentrations recorded from 1 December to 28 February 2022 as measured using a TEOM. All were significantly below the 24-hour and annual impact assessment criteria.

PM₁₀ at TEOM-2 (Plashett)



The graph shows 24-hour average and long term (rolling annual average) PM₁₀ concentrations recorded from 1 December to 28 February 2022 as measured using a TEOM. All were significantly below the 24-hour and annual impact assessment criteria. TEOM-2 was installed on 11 Dec, first full day of data was 12 Dec.

PM_{2.5} at TEOM-2 (Plashett)



The graph shows 24-hour average and long term (rolling annual average) PM_{2.5} concentrations recorded from 1 December to 28 February 2022 as measured using a TEOM. All were significantly below the 24-hour and annual impact assessment criteria. TEOM-2 was installed on 11 Dec, first full day of data was 12 Dec. There are frequent values in the range -1.0 to -4 $\mu\text{g}/\text{m}^3$, these are a function of the TEOM instrument at very low concentrations.

7. Independent Environmental Audit

Independent Environmental Audit

In accordance with Development Consent SSD_9526 Condition E13 an Independent Environmental Audit (IEA) is to be conducted within one year of commencement, the audit is due for completion in July 22.

Independent Environmental Audit

E13. Within one year of commencement of development under this consent, and every three years after, unless the Planning Secretary directs otherwise, the Applicant must commission and pay the full cost of an Independent Environmental Audit of the development. The audit must:

- (a) be led by a suitably qualified, experienced and independent auditor whose appointment has been endorsed by the Planning Secretary;
- (b) be conducted by a suitably qualified, experienced and independent team of experts (including any expert in field/s specified by the Planning Secretary) whose appointment has been endorsed by the Planning Secretary;
- (c) be carried out in consultation with the relevant agencies and the CCC;
- (d) assess the environmental performance of the development and whether it is complying with the relevant requirements in this consent, water licences and mining leases for the development (including any assessment, strategy, plan or program required under these approvals);
- (e) review the adequacy of any approved strategy, plan or program required under the abovementioned approvals and this consent;
- (f) recommend appropriate measures or actions to improve the environmental performance of the development and any assessment, strategy, plan or program required under the abovementioned approvals and this consent; and
- (g) be conducted and reported to the satisfaction of the Planning Secretary.

The Department of Planning and Environment have requested in addition to the conditions to focus the IEA scope on a review and assessment of:

- Aboriginal Heritage
- Air Quality
- Biodiversity
- Rehabilitation
- Social Impacts

8. Community

Complaints

- No complaints received

Community Update

- Mercy Services Singleton
 - Malabar donated and prepared individual Christmas gifts for all 38 residents at the assisted living facility in Singleton.



Community Update

- Upper Hunter Education Fund Inc
 - Malabar are a major sponsors of the fund that provides financial assistance to university students from the local community.

- Muswellbrook Day View Club
 - Malabar donated school supplies to the Muswellbrook Day View Club
 - The supplied went to children at Muswellbrook South, Muswellbrook High and Muswellbrook Public schools.



9. Community Questions

Community Questions

- No questions received

10. General Business

Thank you

Appendix- Monitoring Locations

