



Maxwell CCC Presentation
22 September 2021

Meeting Agenda

No.	Topic	Who
1	Welcome – attendees and apologies	Chairperson
2	Declaration of pecuniary interests/Governance	Chairperson
3	Confirmation of previous Minutes <ul style="list-style-type: none"> • Spur Hill CCC February 2021 meeting • Maxwell Infrastructure CCC March 2021 meeting • Extraordinary Meeting Spur Hill/Maxwell Infrastructure CCC June 2021 meeting 	Chairperson
4	Business Arising	Chairperson
5	Correspondence	Chairperson
6	Update on Maxwell Mine and Spur Hill Project	Wayne Seabrook & James Johnson
7	Management Plans and Environmental Performance	Donna McLaughlin/Alex Newton/Teresa Coleman
8	Community Updates	Teresa Coleman
9	Renewable initiatives	Wayne Seabrook
10	General business	Chairperson
11	Next meeting	Chairperson
12	Meeting close	Chairperson

6. Update on the Spur Hill Underground Metallurgical Project

2021 2D Seismic Program - Update

- **Objectives**

- Better define a geological feature called the “Eastern Boundary Fault”.
- Define the grade and/or presence of geological structures between the Eastern Boundary Fault and the hinge axis of the Denman Anticline.
- Assess the geological structure of the southern portion of the Spur Hill licence , and correlate with the 2D seismic recently completed in the north of EL7429).
- Outcomes will inform the 2022 seismic strategy.

- **Extent**

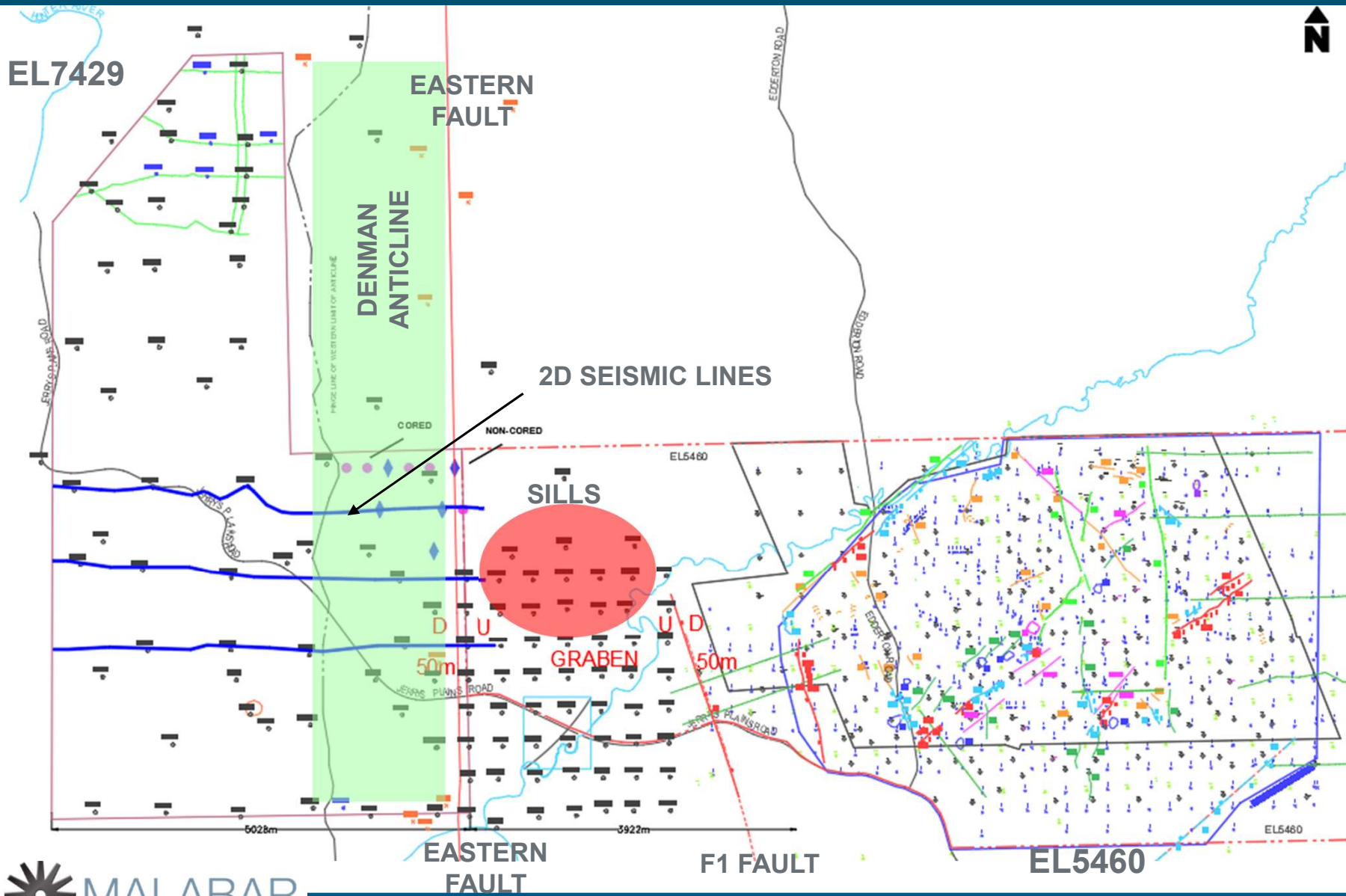
- 3 x ~5 kilometre 2D Seismic Lines (Envirovibe);
 - ▶ Southern Area EL7429 (Spur Hill): 5.03 km.
 - ▶ Western Area EL5460 (Maxwell): 0.25 km
- Lines have been adjusted to mostly traverse; along an existing track, down a fence line, and, across a clearing within a paddock.

- **Timing**

- Landowner consultation to commence around **September** 2021.
- Work to commence around **November/December** 2021, COVID dependent.

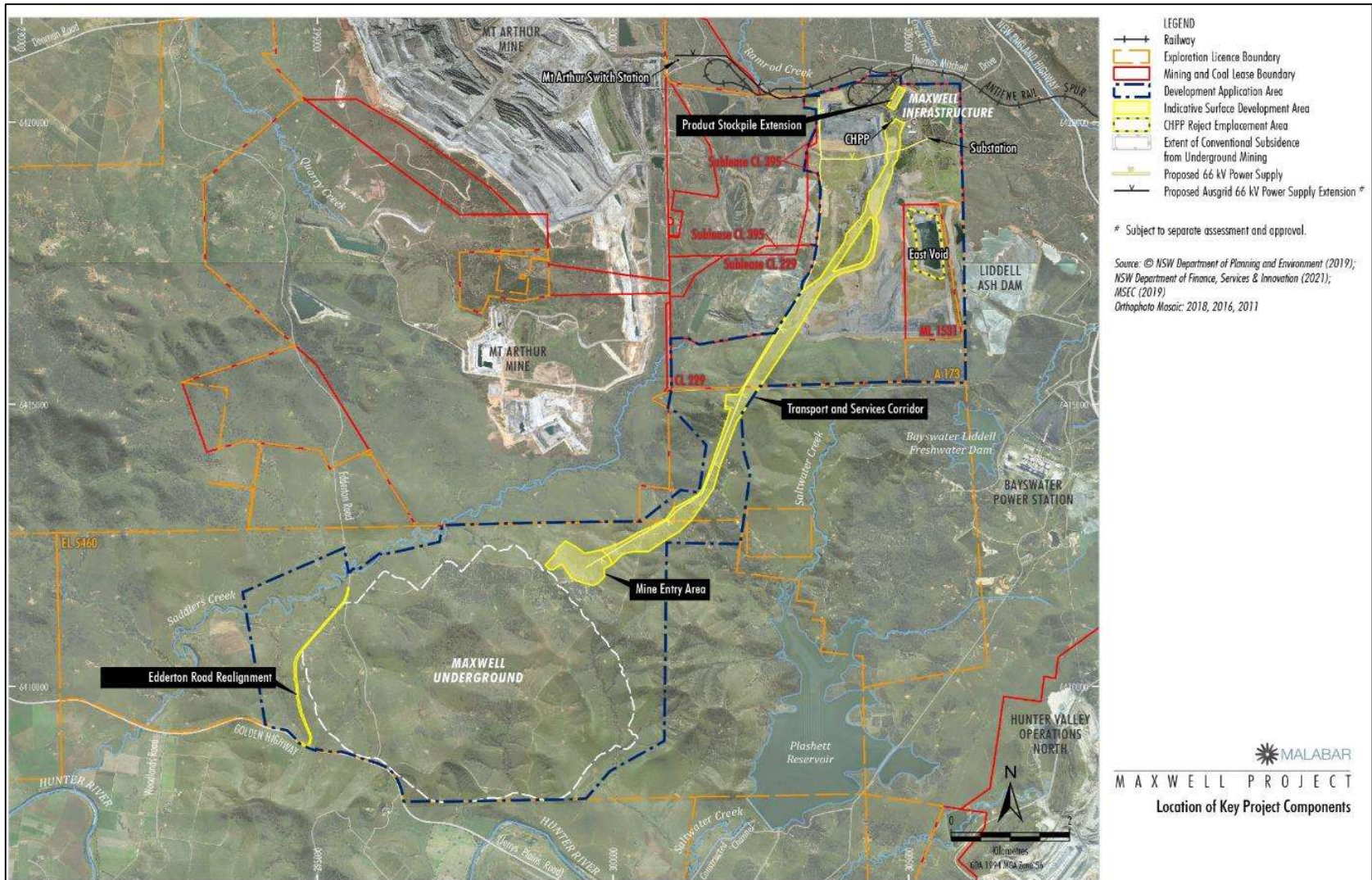


Proposed 2D Seismic Program 2021



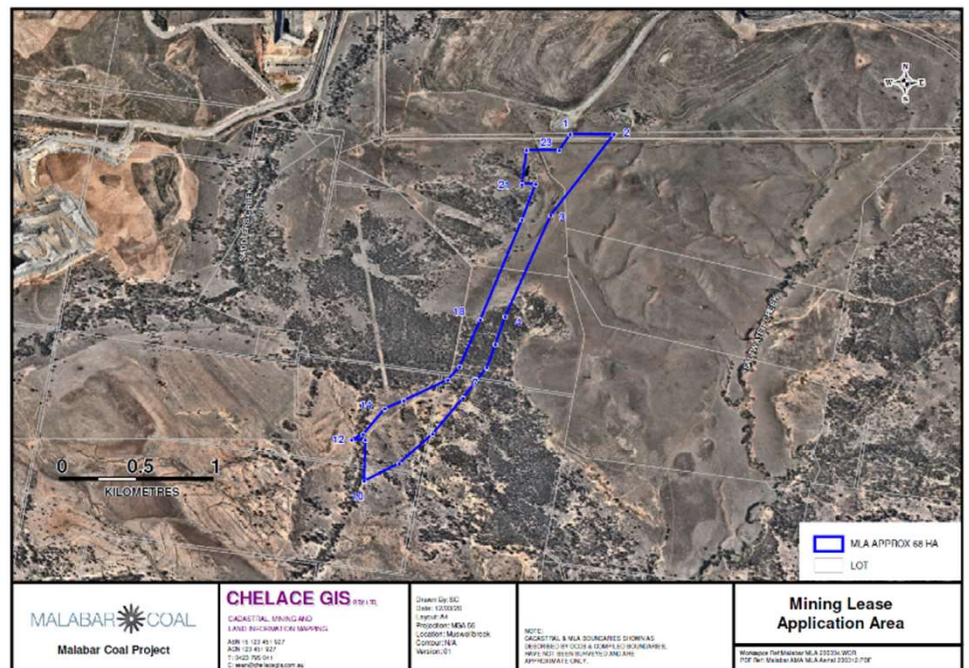
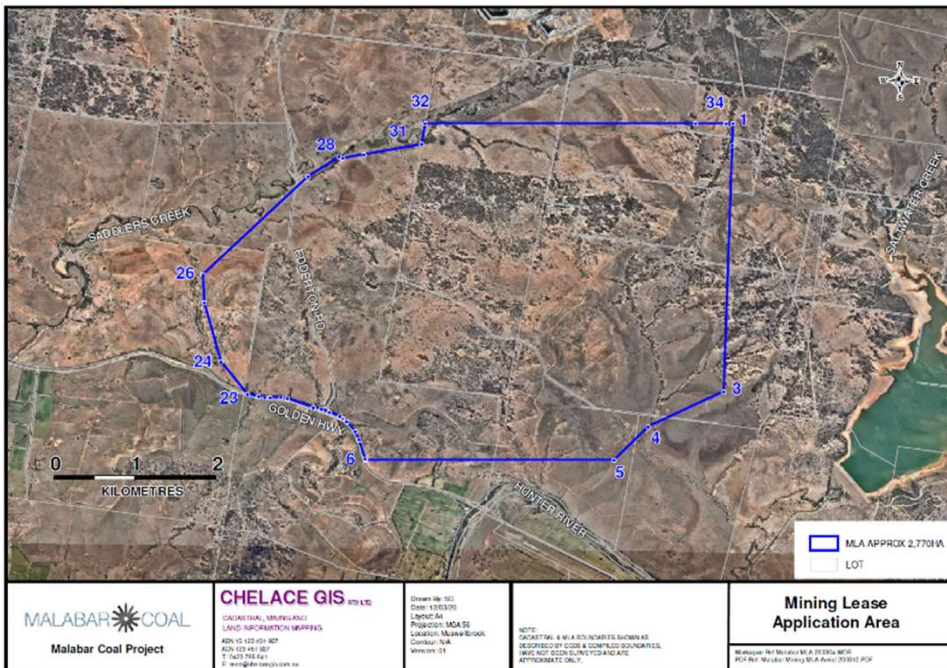
6. Update on the Maxwell Underground Metallurgical Mine

Mine Overview

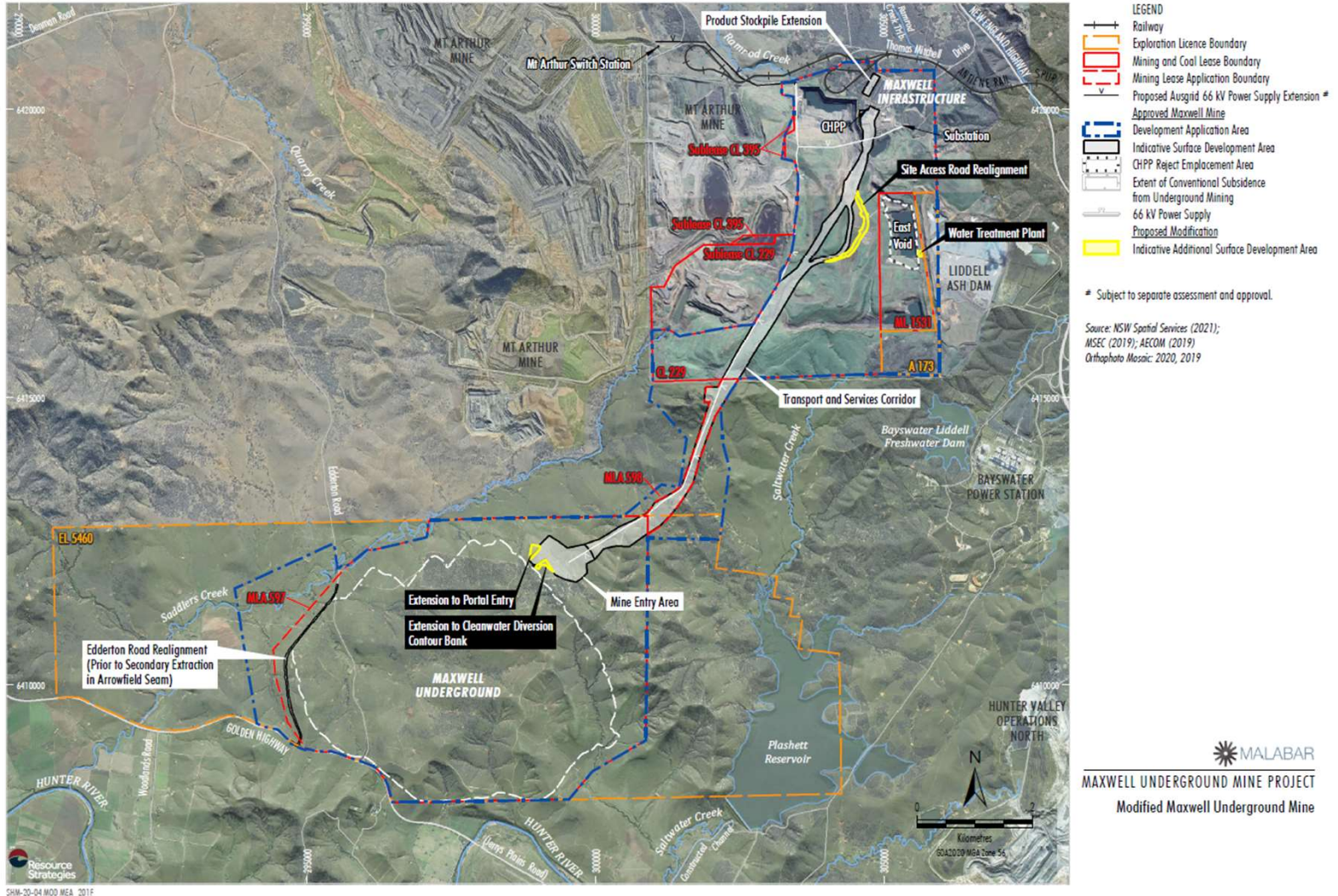


Mining Lease Applications

- Two mining lease applications submitted on 24 December 2020.
- Received Notice of Proposed Recommendation for both MLA's.
- Submitted survey plans to MEG for both MLA's.
- Approval imminent.



Mine Entry Area Modification - Overview



Mine Entry Area Modification – Timing

- Public exhibition completed
- Summary of submissions received:
 - 4 submissions in support from the Public
 - 4 submissions in support from Organisations
 - 4 submissions from Government Agencies
 - ▶ Muswellbrook Shire Council
 - ▶ Environment Protection Authority
 - ▶ Heritage NSW
 - ▶ Biodiversity and Conservation Division
- Response to Submissions submitted on 16 September 2021.
- Determination expected in October 2021.

Schedule

Calendar years	2021			2022			2023			2024			2025 onwards
Mining Leases & Management Plans	█	█	█										
Construction of Access Rd & MEA				█	█	█	█	█	█				
Construction of Mine Access Portals, Drifts & Vent Shaft				█	█	█							
Construction of site infrastructure				█	█	█	█	█	█				
Development Coal produced to set up for Longwall production							█	█	█	█	█	█	█
Longwall ordered, manufactured, delivered and installed				█	█	█	█	█	█				
Design & Construction of overland conveyor							█	█	█				
Longwall production										█	█	█	█

7. Management Plans and Environmental Performance

Environmental Management Plans

Management Plans	SQE approved	Draft Prepared	Consultation	Submit to DPIE	Approved
Noise and Blasting Management Plan	Completed	Completed	Completed	Completed	Completed
Spontaneous Combustion Management Plan	Completed	Completed	Completed	Completed	Completed
Air Quality and GHG Management Plan	Completed	Completed	Not Required	Completed	Completed
Water Management Plan	Completed	Completed	Completed		
Biodiversity Management Plan	Completed	Completed	Completed	Completed	
Aboriginal Heritage Management Plan	Completed	Completed	Completed	Completed	Completed
Visual Impact Management Plan	Not Required	Completed	Not Required	Completed	Completed
Contaminated Materials Protocol	Not Required	Completed	Not Required	Completed	Completed
Bushfire Management Plan	Not Required	Completed	Completed	Not Required	Not Required
Rehabilitation Management Plan (Mining Operations Plan)	Not Required	Completed	Not Required	Completed	Completed
Traffic Management Plan	Completed	Completed	Completed	Completed	Completed
Environmental Management Strategy	Not Required	Completed	Completed	Completed	Completed

	Completed
	Not Required

Cultural Heritage Salvage

- In July 2021 cultural heritage surface artefacts were salvaged within the approved surface development area as required under the Maxwell Underground Development Consent (SSD 9526) and in accordance with the approved Aboriginal Cultural Heritage Management Plan (ACHMP).
- The surface collection was undertaken by archeologists with participation from the Registered Aboriginal Parties (RAP's) .500 artefacts were salvaged.



Rehabilitation

- Spring tree planting preparations are currently underway with 12,500 trees to be planted mid October.
- 500 trees were infill planted at the Maxwell Underground Mine Entry Area (MEA) visual screening area.
- Since taking ownership of the site in early 2018, we have planted 80,000 trees. Total plantings by Malabar and previous owners now exceed 175,000
- Nest boxes were installed in the Southern Offset area in June 2021.
- Weed spraying continued.
- Wild dog and pig trapping undertaken.
- Received a notice from the Resources Regulator to investigate long term erosion of mine rehabilitation. Works expected to be completed in early 2022.



Cattle Grazing Trial

- Continuation of the cattle grazing trial with 97 head of cattle agisted by a local Denman farmer since mid July 2021.
- Cattle are rotated through rehabilitated paddocks to improve species diversity.
- 47 head of cattle are planned to be sold to the feedlot market in November.



Environmental Monitoring – Summary (Maxwell Mine)

An extensive environmental monitoring programme is in progress.

- Deposited dust (4 locations)
- Airborne dust:
 - PM10 onsite (4 locations) and offsite (1 existing, 1 proposed location)
 - PM2.5 offsite (1 existing, 1 proposed location)
- Noise: real time continuous (1) and attended monthly (4)
- Blasting: 4 proposed locations
- Weather: 2 locations
- Groundwater: 37 bores that are sampled quarterly for levels and annually for water quality; 7 bores that monitor levels continuously. Additional 4 new bores prior to construction.
- Surface water: 7 offsite and 10 onsite
- Stream flow: 1 real time continuous gauging station
- Stream health: 3 locations
- Ecological monitoring: 7 reference sites, 12 woodland/6 pasture rehabilitation sites

Results are published on the Malabar website: www.malabarresources.com.au

Environmental Monitoring – Summary (Spur Hill Project)

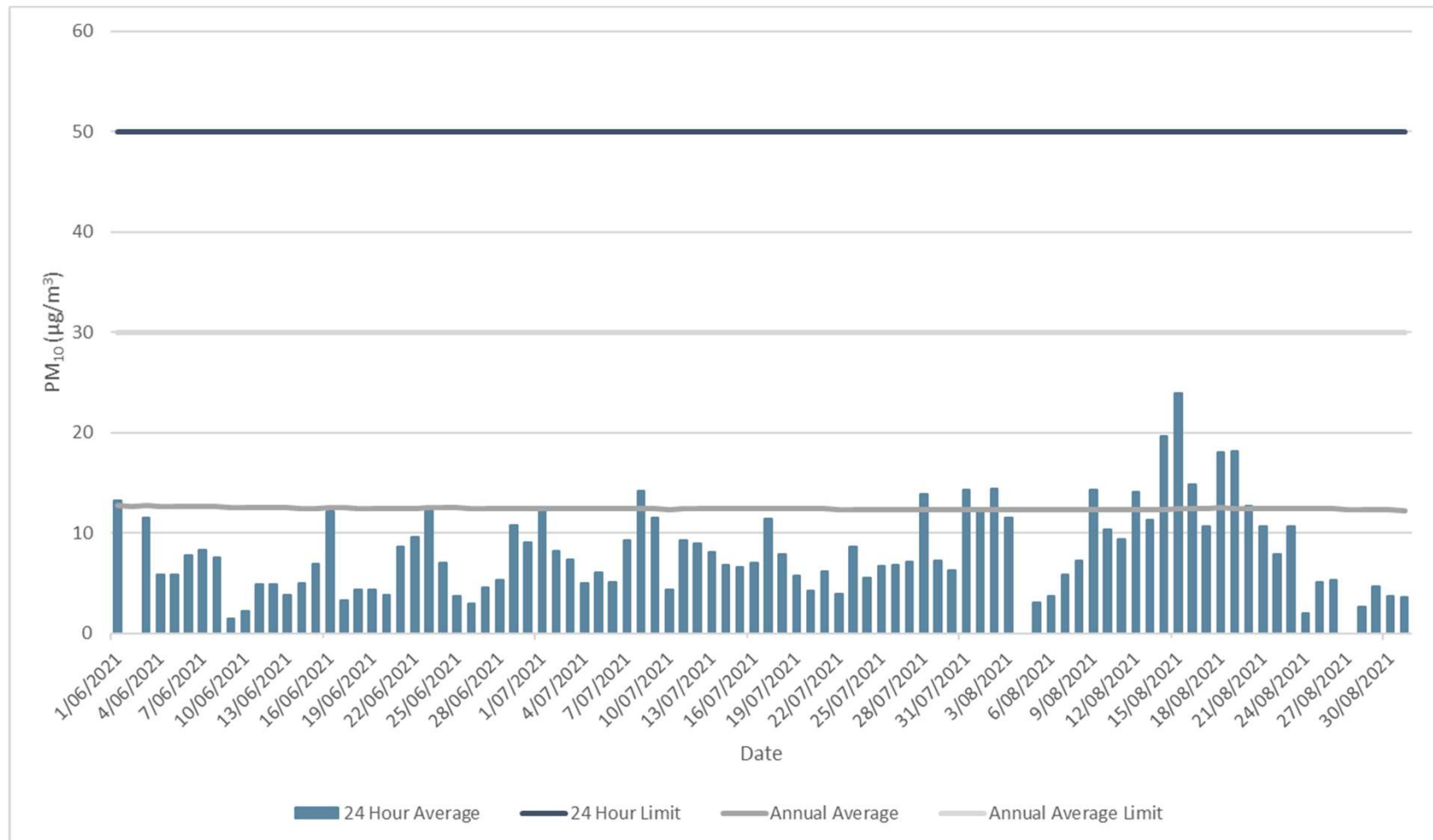
The following environmental monitoring is ongoing for the Spur Hill project.

- Airborne dust: continuous monitoring of PM₁₀ at one location
- Weather: continuous monitoring at one location
- Groundwater: continuous monitoring of water levels and quarterly water quality sampling at 10 bores.
- Surface water: quarterly water quality sampling at 12 locations (creeks/rivers)

Results are published on the Malabar website: www.malabarresources.com.au

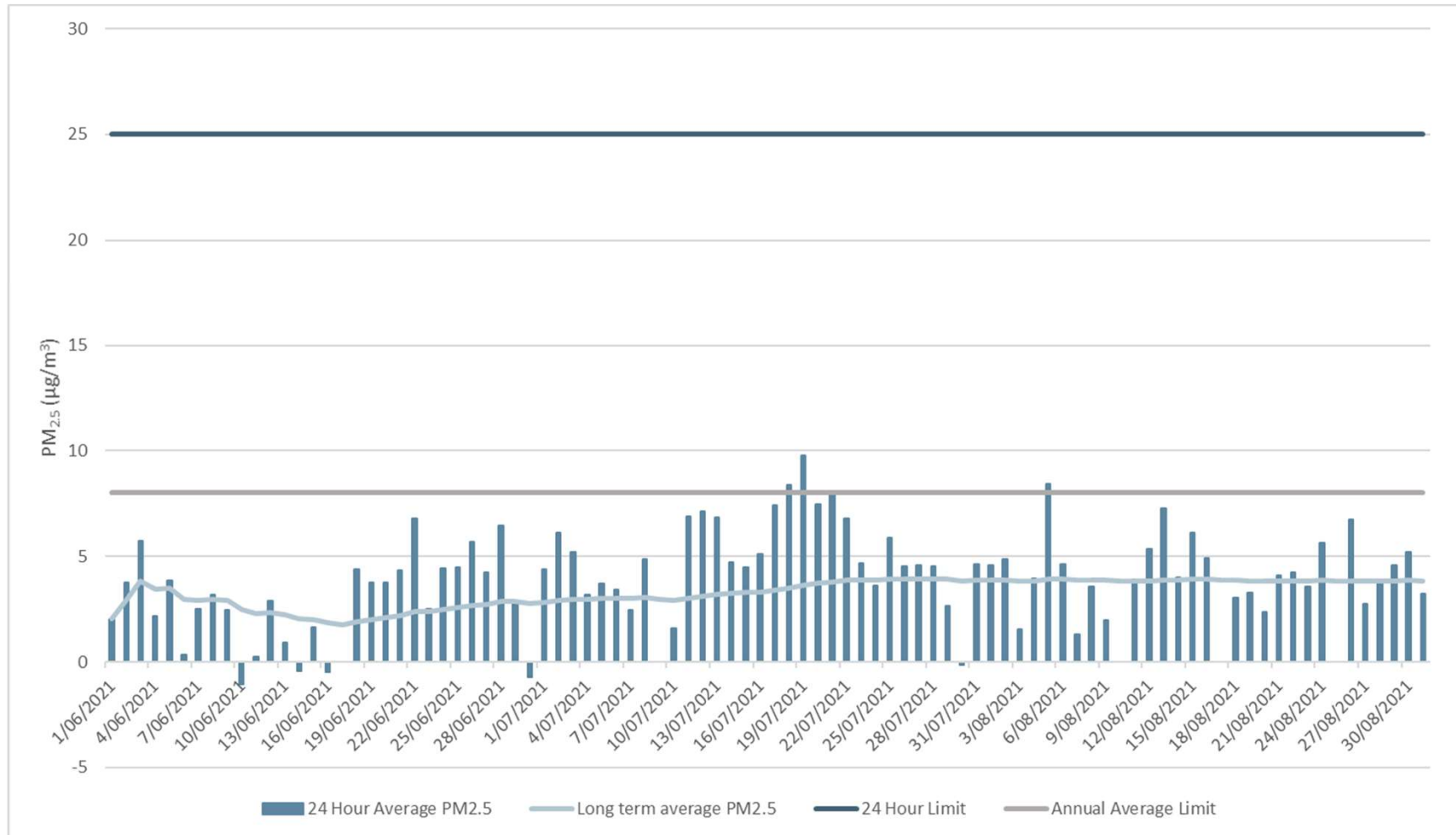


TEOM PM₁₀



The graph shows 24-hour average PM₁₀ concentrations recorded from 1 June to 31 August 2021 as measured using a TEOM. All were significantly below the 24-hour impact assessment criterion.

TEOM PM_{2.5}



The graph shows 24-hour average PM_{2.5} concentrations recorded from 1 June to 31 August 2021 as measured using a TEOM. All were significantly below the 24-hour impact assessment criterion.

8. Community

Complaints

- No complaints received

Recent Sponsorships

Food, Friends and Conversations Community Dinner

- Malabar and Blackroo Industries Community Hope Program hosted a free roast meal and haircut to those in need.
- 55 roast beef/lamb and vegetable meals were served, with desserts donated for the event.
- Conversations and feedback received highlighted issues the community face, in particular;
 - Lack of healthcare services
 - Family orientated activities
 - Affordable rental properties
 - Youth services
- The night was enjoyed by the many volunteers that assisted and those that attended.



“Such a wonderful night! So many people attended which shows this is needed in our community.”

“Thankyou so much, really appreciate your kindness.”

Recent Sponsorships

Singleton Neighbourhood Centre

- Malabar donated supplies including, pencils, workbooks, colouring-in books and art supplies to the Singleton Neighbourhood Centre to distribute to 20 families in need, who are learning at home due to COVID lockdowns.
- The Singleton Neighbourhood Centre provide support, emergency relief and financial assistance to those in the local area.



Recent Sponsorships

Score Community Pantry

- The Score Community Pantry provide food and essential items to relieve poverty within the Upper Hunter Community.
- Malabar donated food pantry items and financial assistance of \$500.



Recent Sponsorships

Jerrys Plains Public School

Malabar donated sporting equipment to Jerrys Plains Public school to assist with physical activities during the COVID lockdown.

- Sporting equipment donated included:
 - Cricket sets
 - Tennis sets
 - Basketballs and netballs
 - Soccer and rugby balls



9. Renewable Initiatives

Partnership with EDF-Renewables

16 September 2021

Announcement

Malabar partners with EDF Renewables on large scale solar in the Upper Hunter Valley

Malabar Resources (Malabar) is pleased to announce it has entered into a memorandum of understanding with EDF Renewables (EDF R), a major global energy company, to develop large scale renewable energy projects in the Upper Hunter Valley.

Malabar's Chairman, Wayne Seabrook, said the partnership with EDF R would bring global and local expertise for large scale solar development in the Upper Hunter region.

"We are very pleased to be partnering with a global leader in renewable energy," Mr Seabrook said.

In 2020 Malabar was pleased to announce that it had received development consent for its 25 MW Stage 1 Maxwell Solar Farm. Nonetheless the strategic importance of the substantial transmission network in Upper Hunter provides the opportunity to substantially increase renewable energy generation beyond 25 MW.

"Our partnership comes at an exciting time for renewable energy in the Hunter Valley after the NSW Government established the Hunter-Central Coast region as the state's fourth Renewable Energy Zone (REZ) in late 2020".

EDF R has a presence in more than 22 countries with its renewable generation portfolio exceeding 15,000MW from solar and wind.

About Malabar Resources

Malabar has a unique approach to developing our assets and recognises the need to transition to a low carbon economy. This approach is expressed through employing less intrusive underground mining methods, developing large scale renewable resources, and rehabilitating previously mined areas for sustainable activities including renewables and agriculture.

10. General Business

General Business

Thank you

Appendix- Monitoring Locations

