



**Spur Hill Underground Coking Coal Project  
Community Consultative Committee  
Presentation**

**29 July 2020**



# Agenda



1. Welcome and apologies
2. Declarations of interest
3. Confirmation of meeting minutes
4. Actions from previous minutes
5. Spur Hill Coking Coal Project update
6. Maxwell Infrastructure update
7. Maxwell Underground Project update
8. Maxwell Solar Farm update
9. Community Update
10. Air Quality Monitoring
11. Complaints register
12. General business

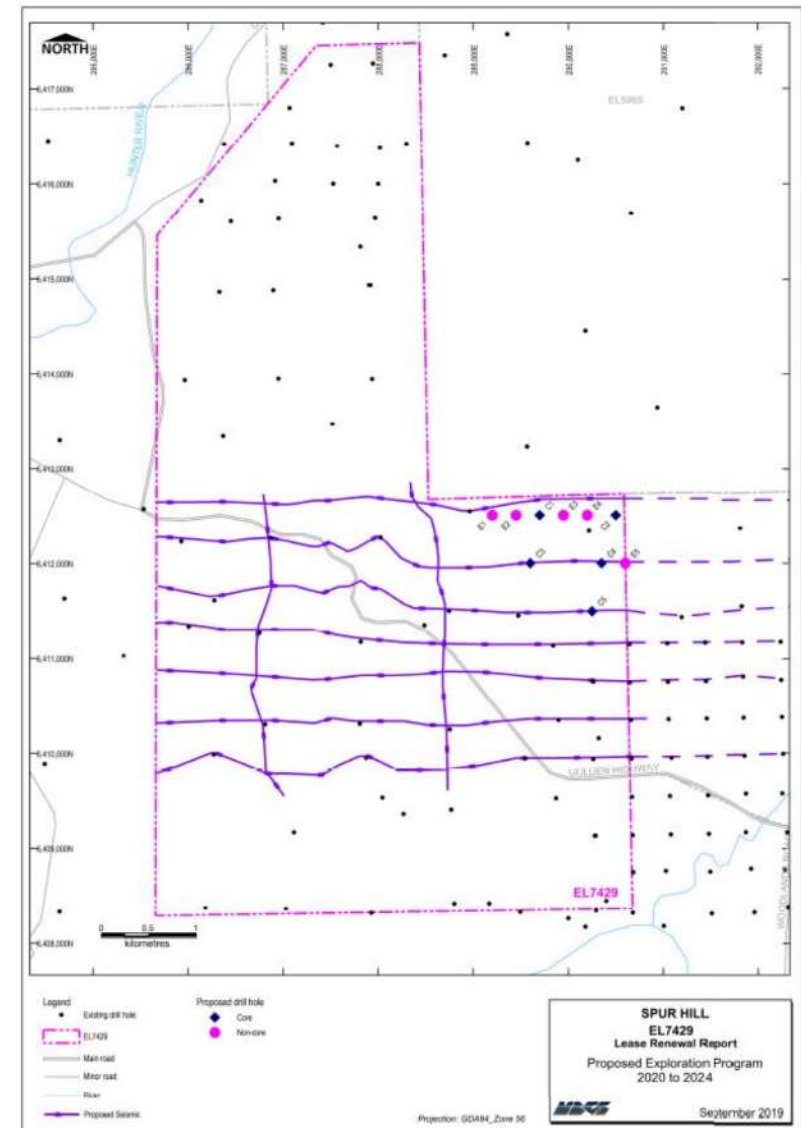


## 5. Spur Hill Coking Coal Project

# Renewal of EL7429



- Application for renewal of EL7429 for a further 5 years was lodged in October 2019 with NSW Department of Planning, Industry and Environment (DPIE) – Division of Resources and Geoscience.
- The future exploration program is designed to enhance the understanding of the geological interface between EL7429 (Spur Hill) and EL5460 (Maxwell).
- EL7429 was renewed for a further 5 years on the 9 July 2020.





## 6. Maxwell Infrastructure

# Maxwell Infrastructure Rehabilitation



- ✓ Approximately 30ha of rehabilitation complete in 2020.
- ✓ Completed an Autumn weed spraying program.
- ✓ Completed an Autumn tree planting program.
- ✓ Undertaken dog baiting and trapping on site and on buffer land.
- ✓ There are now more than 800 hectares of rehabilitated pasture and woodland.



## 7. Maxwell Underground Project



# Maxwell Underground Project progress



## Milestones

NSW Department of Planning, Industry and Environment (DPIE) have placed Malabar's EIS on public display for six weeks from 14 August to 25 September 2019

Malabar responds to submissions

**WE ARE HERE**

The DPIE assesses Malabar's submission, including any issues or concerns raised in the submission process

The DPIE or IPC (Independent Planning Commission), if applicable, announce their decisions

## Opportunities for feedback



We will let you know when the EIS has been submitted. At that point, the community has the opportunity to submit feedback directly to the Department of Planning, Industry and the Environment.



Malabar will engage with the community to address any concerns raised.



In addition, Malabar must formally respond to any issues raised in submissions.



DPIE concludes its assessment and makes recommendations. An approved application may include conditions that address any outstanding concerns raised by the community.



IPC reviews the proposal and conducts a public meeting.



IPC concludes its assessment and hands down a determination.



# Maxwell Underground Project Drilling and Geotech Program



- Malabar commenced a drilling and geotechnical program on EL5460.
- Drilling to collect data on the top and bottom of the proposed drift location.
- Test pits to understand geotechnical parameters for the mine entry area.



## 8. Maxwell Solar Farm

# Maxwell Solar Farm Approval Process



Current Status: **Assessment**

Interact with the stages for their names ?



- Malabar has submitted a Development Application for the Maxwell Solar Farm.
- The solar farm will occupy approximately 105ha of previously rehabilitated areas.
- Adjacent to the major electricity generating hub in NSW (Liddell and Bayswater Power Stations) and in proximity to high voltage power lines.
- Installed capacity of 25MW.
- The solar farm would generate enough energy to power about 10,000 local homes.
- EIS & DA lodged in December 2019 and closed for submissions on 3 February 2020. Currently in the 'assessment' phase and waiting for a determination.



## 9. Our Community

# Martindale Public School



- Malabar donated gift bags to every student at Martindale Public School during May 2020 to help keep the kids entertained at home during the COVID-19 restrictions.
- The bags were full of fun things like bubbles, colouring in books and pencils, drink bottles and much more.



# Calvary Muswellbrook



- During June 2020, Malabar donated three large hampers and flowers to the residents at Calvary Muswellbrook who were experiencing reduced visits from relatives during the COVID-19 restrictions.
- The residents were delighted to receive cards, CD's, DVD's, board games, puzzles, handcraft activities, personal care products and writing sets.





# St James' Yarning Circle



- During the school holidays, Malabar was busy installing a yarning circle for the kids at St James Primary School in Muswellbrook.
- The use of a yarning circle is an important process within Aboriginal and Torres Strait Islander culture. The yarning circle has been used for centuries to learn from a collective group, build respectful relationships, and to preserve and pass on cultural knowledge.





# St James' Yarning Circle





# Mental Health First Aid



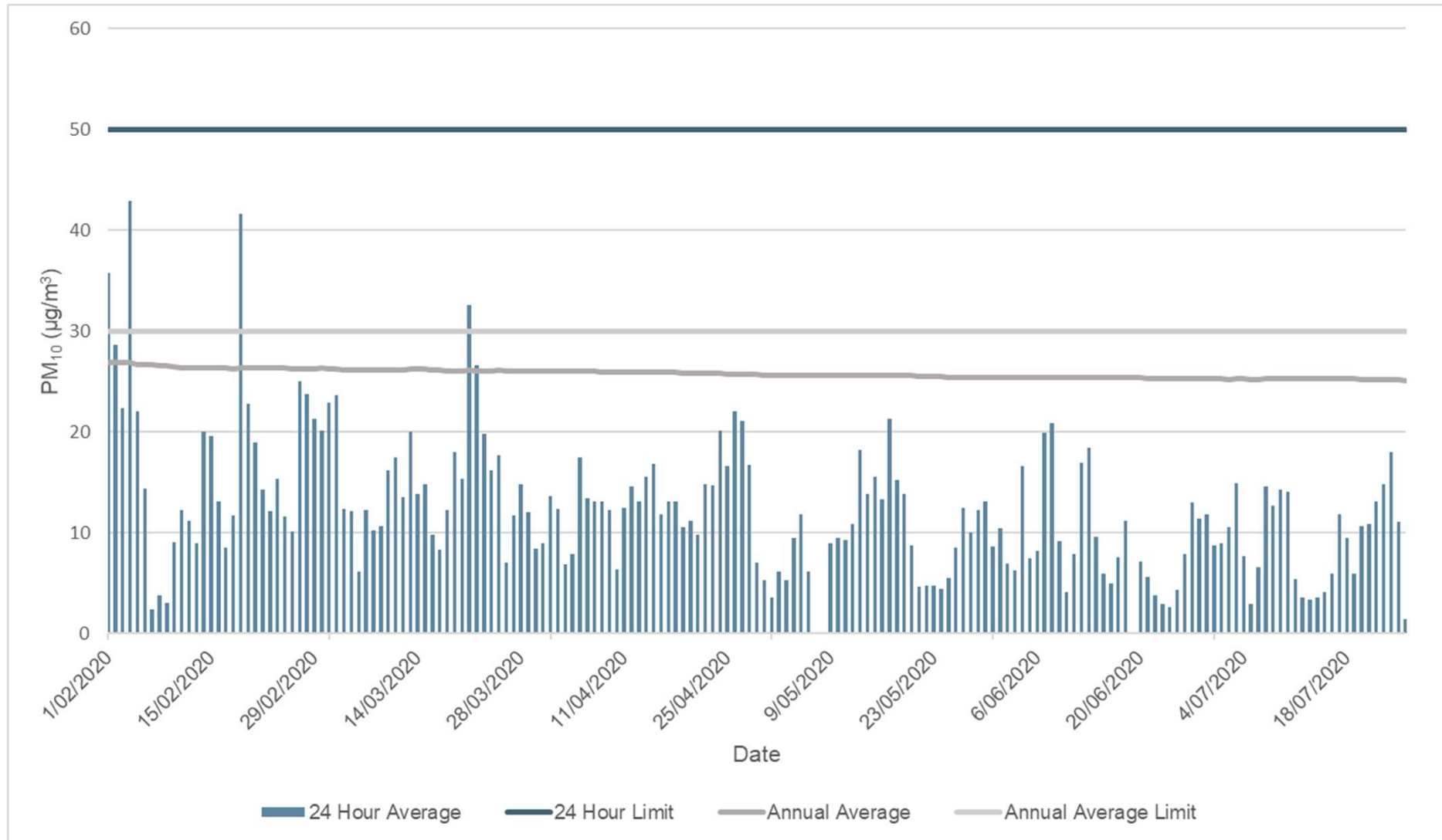
- Malabar has partnered with not-for-profit organisation 'Where There's a Will (WTAW)' to provide youth mental health first aid training in Muswellbrook.
- The training which will be run on the 1<sup>st</sup> and 2<sup>nd</sup> of August, is open to everyone including parents, sports coaches, teachers and youth workers from the Upper Hunter.
- The cost of this course is fully funded by Malabar.
- Follow this link to RSVP: <http://muswellbrookymhfa.rsvpify.com/>





## 10. Air Quality Monitoring

# Maxwell Infrastructure TEOM PM<sub>10</sub>





## 11. Complaints Register

# Complaints Register



- No complaints registered since previous CCC meeting.
- Total complaints for 2020: 0 complaints.



## 12. General Business

# Abbreviations and Glossary



- 2D – two dimensional
- CCC – Community Consultative Committee.
- DA – Development Application.
- DPIE – NSW Department of Planning, Industry and Environment.
- DRG – NSW Division of Resources and Geoscience (part of NSW Department of Industry).
- EIS – Environmental Impact Statement.
- EL – Exploration Licence.
- EP&A Act – NSW *Environmental Planning and Assessment Act 1979*.
- EPBC Act – Commonwealth *Environment Protection and Biodiversity Conservation Act 1999*.
- MLA – Mining Lease Application.
- SHM – Spur Hill Management Pty Ltd.
- TEOM – an air quality monitoring device, Tapered Element Oscillating Microbalance.