

# Maxwell Underground Mine

## – Mine Optimisation Modification



### Background

Maxwell Ventures, a wholly owned subsidiary of Malabar Resources, is seeking a minor modification to the Maxwell Underground Mine (Maxwell).

Maxwell is located in the Upper Hunter Valley of NSW, southeast of Denman and southwest of Muswellbrook.

Maxwell is an underground-only mining operation that is approved to operate for 26 years producing high quality coals, with at least 75% capable of being used in the making of steel with the balance suitable for use in new-generation High Efficiency, Low Emissions (HELE) power generators.

Construction of the Maxwell Mine commenced in May 2022 and will generate approximately 250 jobs throughout the construction period. Once operational, the mine will generate 350 long-term jobs in addition to many more indirect jobs and stimulus for local businesses and suppliers.

The mine was granted approval by the NSW Independent Planning Commission in December 2020 (Development Consent State Significant Development 9526) and by the Australian Government in March 2021.

Malabar is seeking to modify the Development Consent SSD 9526 under section 4.55(2) of the *Environmental Planning and Assessment Act 1979*.

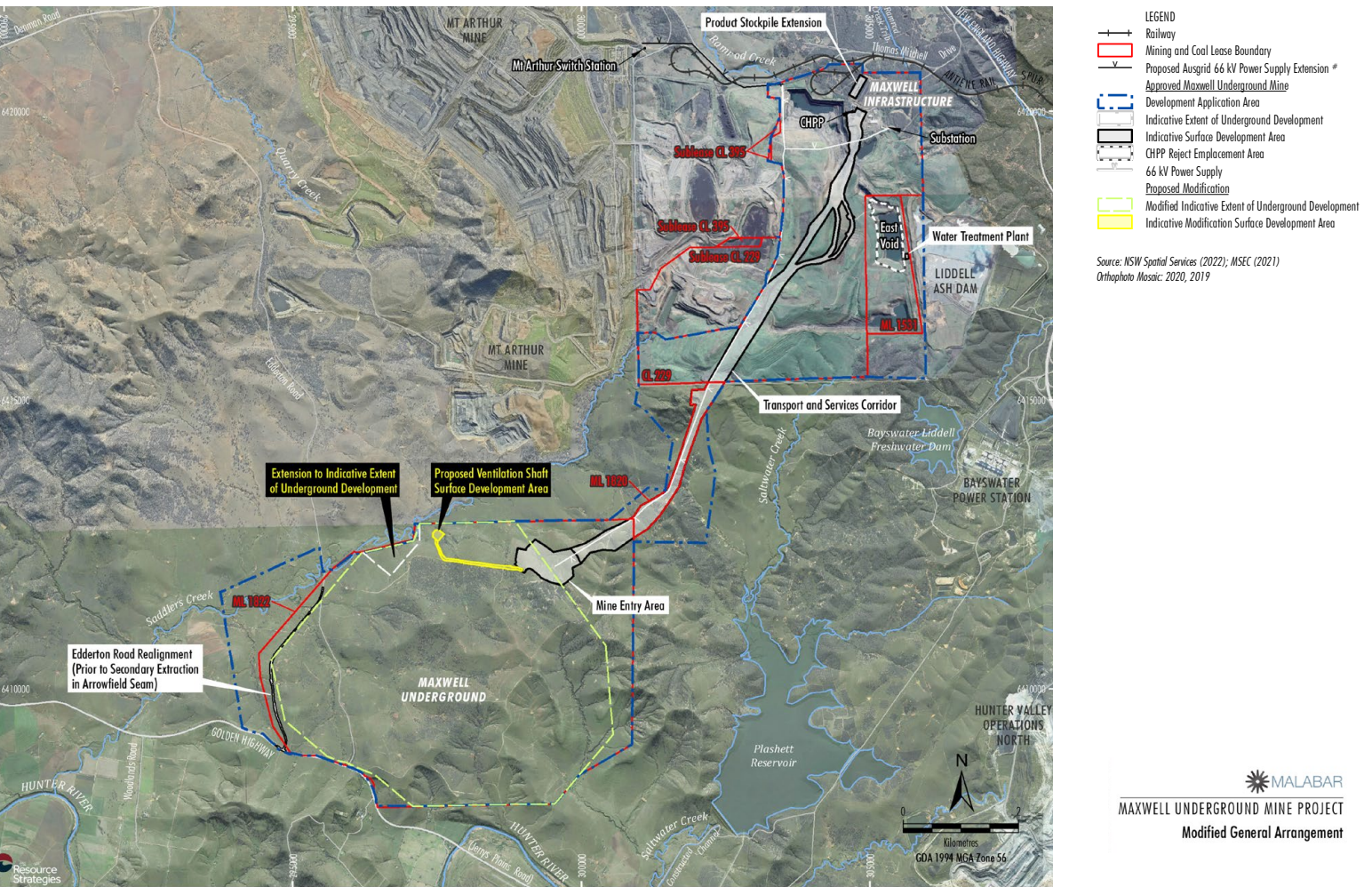
### Overview of modification

Malabar continues to look for ways to improve efficiency and safety. The proposed modification seeks to implement an improved underground mine layout that achieves safer operating outcomes over the life of the mine, and has minimal additional impacts on the environment and community.

Importantly, the modification is located wholly within the approved Development Application Area and would comprise the following components:

- Re-orientation of longwall panels to better align to the geotechnical conditions.
- Commencing production in the Woodlands Hill seam initially with 145m wide longwall panels, and then increasing the longwall to 300m wide, rather than commencing with a 300m wide longwall at the outset.
- Relocation of the Woodlands Hill seam ventilation shaft to better suit the revised mine layout.

This modification would not change the mining method, maximum annual production or product coal rate, mine life, total resource recovered or workforce, and the significant net positive benefits of the mine to the NSW and local governments remain.





## Benefits

The Modification would provide the following benefits:

- A safer environment for our workers.
- A reduction in the groundwater inflows over the life of the mine.
- The re-orientation of the longwall panels would also reduce the duration of mining beneath Edderton Road for each longwall pass.
- Mine plan aligns more favourably to the geotechnical environment.
- Reduction in future capital cost by removing requirement to modify longwall equipment.
- Initial longwall panels extracted in a lower gas regime providing additional time to develop gas management strategies, including beneficial re-use.
- Relocates the ventilation shaft for the Woodlands Hill Seam closer to “pit-bottom” of the surface-to-seam access and in-seam access drift, enabling the ventilation circuit to be established more quickly for the benefit of the underground working environment.

## Contact

For further information about the proposed modification, please visit the NSW Planning Portal at <https://pp.planningportal.nsw.gov.au/major-projects/projects/maxwell-mod-2-longwall-reorientation>.

**Email:** [info@malabarresources.com.au](mailto:info@malabarresources.com.au)

**Phone:** 1800 653 960

**Web:** [malabarresources.com.au](http://malabarresources.com.au)

## Assessment of impacts

We have undertaken a rigorous review of the potential environmental impacts of the modification. The studies completed have demonstrated the modification will have a minimal additional environmental impact compared to the approved mine.

Assessments undertaken include:

- Visual assessments and preparation of visual simulations to show the view from Edderton Road, and confirmation that the modification will have no visual impacts on the neighbouring thoroughbred stud farms.
- Assessment of air quality and noise impacts from the revised ventilation shaft location.
- Aboriginal Cultural Heritage Assessment, with the mine layout designed to avoid sites of ‘High Significance’.
- Subsidence assessment confirming no consequences on the Hunter River and Saddlers Creek and no incremental impact to the Golden Highway.
- Groundwater assessments with modelling predicting a reduction in total groundwater inflows to the mine workings.

We have consulted with a range of stakeholders on the proposed modification including with Registered Aboriginal Parties, NSW Government agencies, the Maxwell Community Consultative Committee, local thoroughbred stud farms, and neighbouring properties. We will continue to consult with stakeholders as the modification is assessed.

Malabar anticipates that it will be able to operate Maxwell under the proposed modification in accordance with existing environmental management plans, environmental monitoring programs, and existing criteria, performance measures and limits described in Development Consent SSD 9526.

Malabar lodged the Modification Report with the NSW Department of Planning and Environment in June 2022 and assessment is ongoing.

## Approved



## Proposed

