



MAXWELL PROJECT

ATTACHMENT 9

Consultation Materials



MAXWELL PROJECT COMMUNITY NEWSLETTER

Issue No.1 June 2018

This newsletter provides information about Malabar Coal's proposed underground-only mine, the Maxwell Project, located south of Muswellbrook.

It outlines some of the benefits that we anticipate will flow through to the community and explains why we believe the Maxwell Project can co-exist with other local industries.

Future newsletters will be provided as the Maxwell Project progresses.

On the back of this newsletter, you will find information about the different ways you can contact Malabar Coal, learn more about the project, and provide feedback.

WHO WE ARE

Malabar Coal is an independent Australian-owned mining company based in New South Wales.

Malabar Coal owns:

- the Spur Hill Project exploration licence (EL 7429)
- the Maxwell Project exploration licence (EL 5460)
- the now-closed Drayton Mine and associated infrastructure – re-named “Maxwell Infrastructure”.

This update focusses on the Maxwell Project, but further information about our other assets is available on our website – www.malabarcoal.com.au.

Our approach

At Malabar Coal (Malabar), we know that **we must co-exist with the local community, other local industries and activities.**

It was with this understanding and community feedback in mind that we committed to developing the Maxwell Project as an **underground mine.**

We are planning on producing coals predominantly for the steel manufacturing industry. The coal seams within the project area are very high quality. Any coal not sold to the steel manufacturing industry will be premium quality thermal coal, suitable for use in High Efficiency, Low Emission (HELE) power plants.

Underground mining means **significantly lower impacts than an open-cut mine.**

We have carefully placed the mine entry for the Maxwell Project in a valley 5km north of the Golden Highway. This means it cannot be seen from the Highway or the local horse studs.

We believe this very different approach addresses concerns that were raised in relation to past proposals for the area.

Malabar in the community

One way that Malabar demonstrates our commitment to the local community is through contributions to a wide range of community groups and charities including aged care, sports, education, and emergency services. We hope to expand our work with the community as our operations grow.



What is the Maxwell Project?

The Maxwell Project is an underground coal mining development located east of Denman and south of Muswellbrook.

Malabar purchased this exploration licence from Anglo American and its partners in 2018. Malabar has committed to developing the area as an **underground mine** that would be **vastly different from past proposals** for the site.

It is Malabar's strong view that this underground project can comfortably co-exist with other industries and land uses in the area.

At Malabar's request, the NSW Government has amended the exploration licence (EL) to give up the portion of the EL located to the south of the Golden Highway, and to restrict any future development to underground mining only.

In addition to this, and with the full support of Malabar, the NSW Government has added a further layer of protection, a State Environmental Planning Policy (SEPP), to provide legal certainty that only an underground project can be developed within EL5460.

Throughout the planning process we will be taking a number of practical steps to reduce our impact on the environment and the community wherever we can. To that end, we will be using the infrastructure at the now-closed Drayton Mine to process and rail all coal we intend to mine at the Maxwell and Spur Hill Projects.

Progress update

Malabar formally took control of the Drayton Mine and EL 5460, now known as the Maxwell Project, on 26 February 2018.

We started rehabilitation work at the Drayton site as quickly as possible, with the first bulldozer commencing work on the mine site in early March. The number of staff working on the project is steadily increasing, with around 30 people currently on site.

Site rehabilitation will be undertaken in two stages.

The first stage is to shape the land and establish pasture and / or trees on the overburden emplacement areas. This initial work is expected to take around two years, with additional rehabilitation work occurring over time. Once this work is complete, we are open to different uses for the site. To that end, we have had preliminary conversations with the local community about different ways the land could be used.

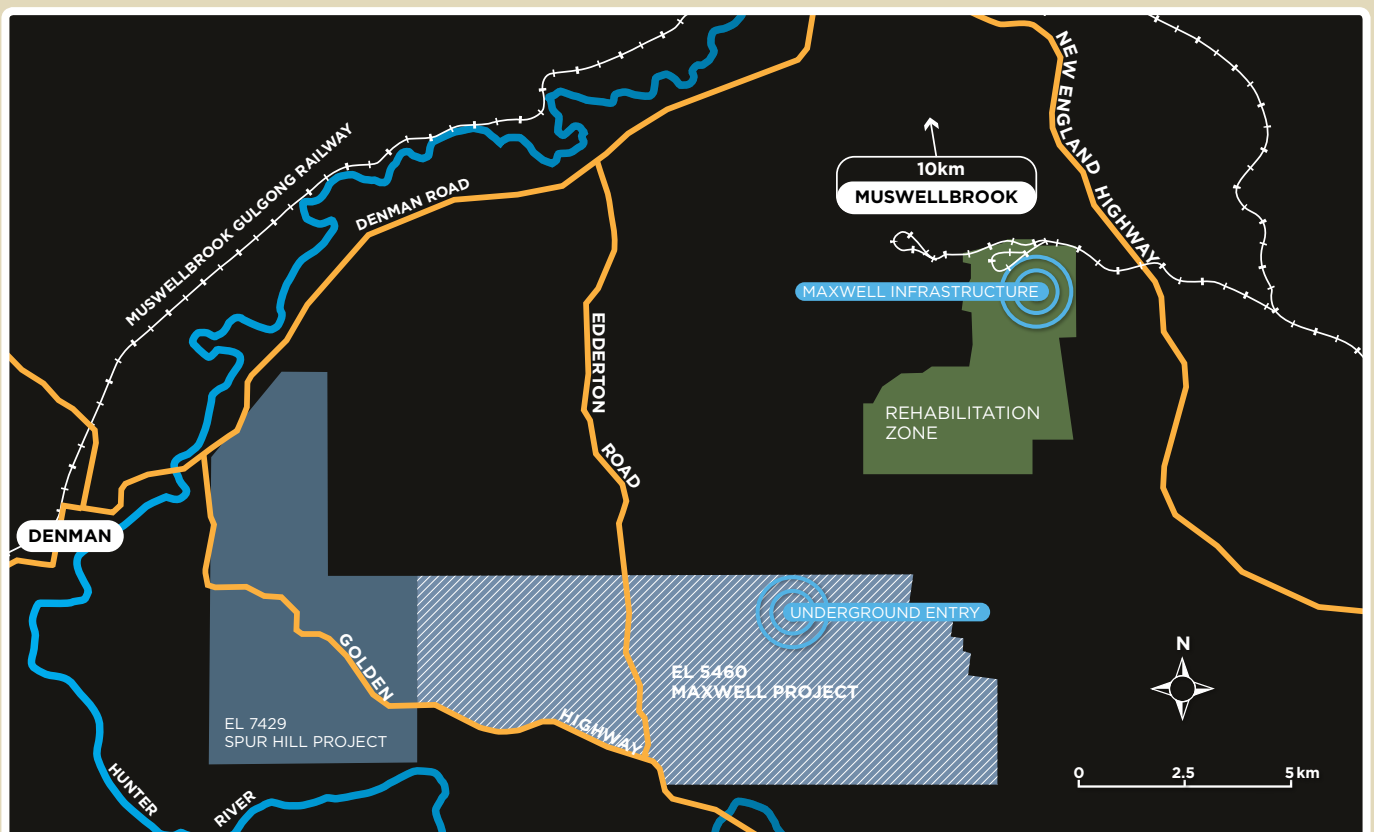
The currently approved final landforms leave voids. Malabar has publicly stated its plan to improve these final landforms to result in a more visually appealing outcome. This will be the second stage of our rehabilitation work.

At the same time, we are continuing the detailed technical work required to prepare an Environmental Impact Statement and development application for the Maxwell underground Project.

Benefits of the Maxwell Project

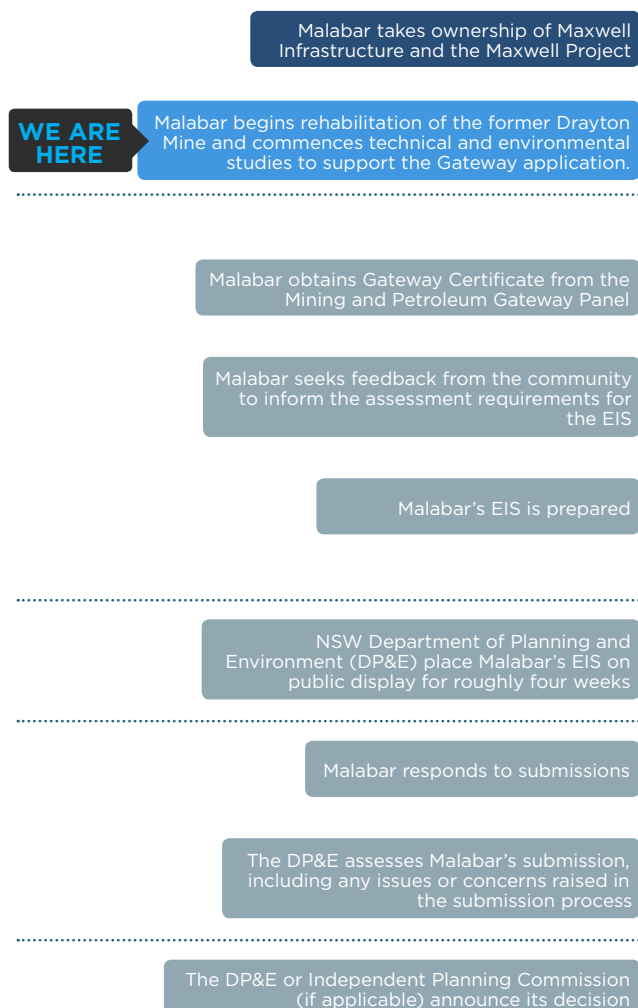
- **Certainty** that there can never be an open-cut coal mine within EL 5460.
- **More jobs for the region.** Malabar estimates that the Maxwell Project will generate about 350 new direct, long term jobs for the region along with many more indirect jobs.
- **An economic boost to the local community and the economy.** The project will provide ongoing support for local businesses from the initial capital to establish an underground mine and the substantial ongoing operating inputs. It is expected that over the initial 26 years of this project, coal sales will exceed \$20 billion and royalties paid to the NSW State Government will exceed \$1.4 billion.
- **Better rehabilitation outcomes.** Malabar will deliver a more visually appealing final outcome by placing reject stone and rock from underground operations in the voids at the Drayton Mine.
- **Ongoing support for the community groups** we have supported for more than five years.

Where is the Maxwell Project?



Project Progress

Milestones



Opportunities for feedback



At the bottom of this page you can find out how you can provide feedback.



We will engage with the local community during the preparation of the Environmental Impact statement (EIS) to ensure community feedback is gathered, considered in our future plans, and concerns are addressed.



The studies that support the EIS are prepared by recognised experts and include assessments of potential impacts on agriculture and agribusiness, water, biodiversity, heritage, air quality, amenity and the road network.



The EIS will be accompanied by a social impact assessment and an economic assessment.



The community has the opportunity to submit feedback directly to the DP&E.



Malabar will engage with the community to address any concerns raised.



In addition, Malabar must formally respond to any issues raised in submissions.



An approved application may include conditions that address any outstanding concerns raised by the community.

How to Provide Feedback

Malabar has developed a survey to gather feedback from community members, land owners, businesses and service providers in the Muswellbrook and Singleton Local Government Areas.

The purpose of the survey is to give you an opportunity to have your say on how the development of this new underground mine may affect you and your community.

There are three ways to complete the survey:

1. Online: You can fill in the survey online at <https://www.research.net/r/MaxwellISIA>

2. Using the reply-paid envelope: Alternatively, this newsletter includes a hard copy of the survey, with a reply-paid envelope. You can complete the survey, then post your response to us.

3. Over the phone or via email: Monday to Friday, between 8am and 4pm, you can call or email Donna McLaughlin, Manager Environment and Community.

Contact Us

If you would like to register for further information about the Maxwell Project, please send an email titled 'Register for Maxwell Project Information' to info@malabarcoal.com.au and include your name, address and phone number.

If you have any other questions about Malabar Coal or the Maxwell Project, please do not hesitate to contact us.

Donna McLaughlin

Email: info@malabarcoal.com.au

Phone: (02) 6542 0283

Web: www.malabarcoal.com.au

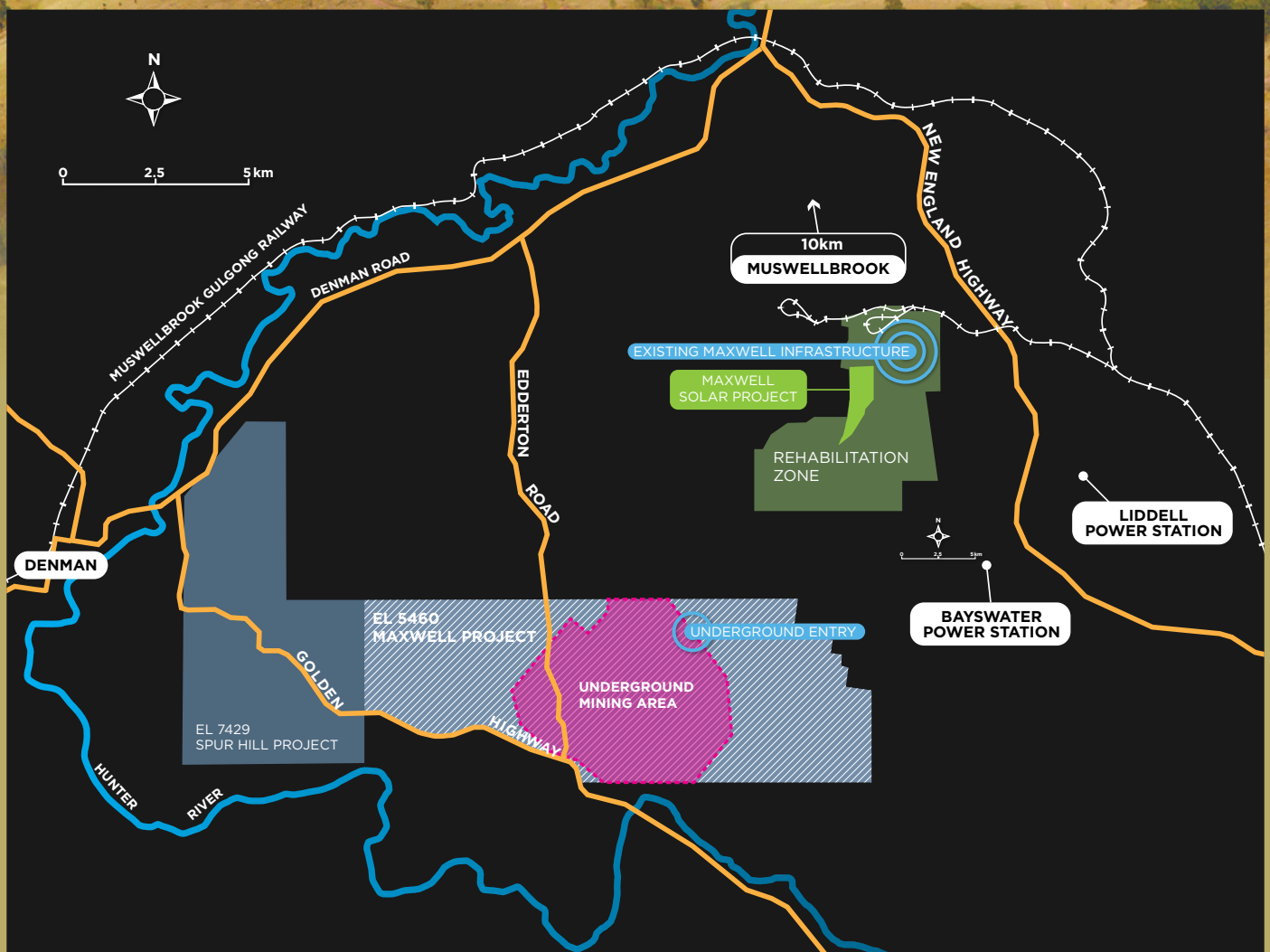
Proudly printed locally by Hunter Valley Printing

MAXWELL PROJECT COMMUNITY NEWSLETTER

August 2018

Providing you with the latest news about Malabar Coal's proposed underground-only mine, the "Maxwell Project", located south of Muswellbrook.

This community newsletter relating to the Maxwell Project, follows the Community Update circulated earlier this year.



The Maxwell Solar Project

Malabar confirmed its intention to develop a solar farm on a portion of the old Drayton Mine site. The 'Maxwell Solar Project' is proposed to have an installed capacity of about 25MW and provide 50 more jobs for the local area during construction.

The project is a great use for a site that has previously been subject to open cut mining and is another example of Malabar's commitment to the local area, the local economy and, above all, to coexistence with a wide range of industries and activities.

Working at capacity, the solar farm would generate enough energy from the sun to power about 10,000 local homes.

Rehabilitation Update

While the plans for the Maxwell Underground Project have continued to develop, Malabar has also been continuing the important work of rehabilitating the old Drayton Mine site.

That work is continuing at pace with more than 30 people on site working to get the job done and making great progress.

MAXWELL UNDERGROUND PROJECT UPDATE

Since the last newsletter, Malabar has:

- Submitted a Scoping Report to the NSW Department of Planning and Environment.
- Applied for a Gateway Certificate from the Mining and Petroleum Gateway Panel.
- Referred the Project to the Commonwealth Minister for the Environment and Energy for consideration as to whether the Project requires further approval under the Commonwealth Environment Protection and Biodiversity Conservation (EPBC) Act, 1999.

Each of these important steps is outlined below

Scoping Report for the Maxwell Project

- A Scoping Report has been provided to key State regulatory agencies to initiate the preparation of the Secretary's Environmental Assessment Requirements (SEARs).
- The SEARs will list matters that we need to address in the Project's Environmental Impact Statement (EIS).
- The Scoping Report is available on the Department of Planning and Environment's website: <http://www.majorprojects.planning.nsw.gov.au/page/>

Application for Gateway Certificate for the Maxwell Project

- Malabar has applied for a Gateway Certificate from the Mining and Petroleum Gateway Panel.
- The Panel assesses the impacts of State significant mining proposals before a development application and EIS can be lodged.
- After Malabar receives a Gateway certificate, we will be able to finalise the EIS and development application.

EPBC Referral

- An EPBC referral is an application for the approval of an action - in this case the Maxwell Underground Project - that could have an impact on any matter of national environmental significance.
- After receiving a referral, the Commonwealth Minister for the Environment and Energy (or delegate) decides whether the action, will have, or is likely to have a significant impact on a matter of national environmental significance.
- If the Minister decides that significant impacts are likely, then the Maxwell Underground Project will require approval under the EPBC Act.

Project Progress

Milestones

Malabar lodged Application for a Gateway Certificate to the Mining and Petroleum Gateway Panel



Malabar has requested SEARs from the NSW Department of Planning and Environment



WE ARE HERE

Malabar has lodged a Referral under the Commonwealth EPBC Act



Malabar obtains Gateway Certificate from the Gateway Panel



Malabar seeks feedback from the community to inform the EIS



Malabar's EIS is prepared



NSW Department of Planning and Environment (DP&E) place Malabar's EIS on public display for about four weeks



Malabar responds to submissions



The DP&E assesses Malabar's submission, including any issues or concerns raised in the submission process



The DP&E or Independent Planning Commission (if applicable) announce its decision



Opportunities for feedback

At the bottom of this page you can find out how you can provide feedback.

We will engage with the local community during the preparation of the EIS to ensure community feedback is gathered, considered in our future plans, and concerns are addressed.

The studies that support the EIS are prepared by recognised experts and include assessments of potential impacts on agriculture and agribusiness, water, biodiversity, heritage, air quality, amenity and the road network.

The EIS will be accompanied by a social impact assessment and an economic assessment.

The community has the opportunity to submit feedback directly to the DP&E.

Malabar will engage with the community to address any concerns raised.

In addition, Malabar must formally respond to any issues raised in submissions.

An approved application may include conditions that address any outstanding concerns raised by the community.

If you would like to register for further information about the Maxwell Project, please send an email titled 'Register for Maxwell Project Information' to info@malabarcoal.com.au and include your name, address and phone number.

If you have any other questions about Malabar Coal or the Maxwell Project, please do not hesitate to contact us.

Donna McLaughlin

Email: info@malabarcoal.com.au

Phone: (02) 6542 0283

Web: www.malabarcoal.com.au

COMMUNITY NEWSLETTER

Third Edition | February 2019

Happy New Year! Welcome to the first community newsletter of 2019. This edition includes the latest news about;

- I. Malabar's proposed underground-only mine, the Maxwell Project;
- II. Our progress rehabilitating the Maxwell Infrastructure site, and;
- III. Our work with the local community.

MAXWELL PROJECT UPDATE

In November we held two community information sessions for the Maxwell Project. Thank you to everyone who was able to come to one of the sessions and learn more about our **underground-only** mine beneath Exploration Licence (EL) 5460. We appreciated the opportunity to tell you more about the project and answer any questions community members had.

In December Malabar was issued a Gateway Certificate. The Gateway Certificate (available online) recommends additional studies that we will undertake as part of our Environmental Impact Statement (EIS) and Development Application (DA).

In addition to this, since our last update, we have been progressing the detailed technical studies required for our EIS and DA.

These studies include;

- Subsidence forecasts
- Groundwater modelling
- Soil qualities across the EL
- Agricultural impact assessment
- Flora and Fauna
- Noise and air quality
- Aboriginal heritage
- Historic heritage
- Landscape and visual studies
- Surface water
- Geochemistry
- Any existing land contamination
- Geomorphology
- Transport
- Social impact assessment
- Health risk assessment
- Economic

Upon lodging the DA later this year, the EIS will be placed on public display.

PROJECT PROGRESS

Milestones

Malabar takes ownership of Maxwell Infrastructure and the Maxwell Project

Malabar begins rehabilitation and commences technical and environmental studies to support the Gateway application

Malabar lodged a Referral under the Commonwealth EPBC Act

Malabar obtains Gateway Certificate from the Mining and Petroleum Gateway Panel

WE ARE HERE

Malabar seeks feedback from the community to inform the assessment requirements for the EIS

Malabar's EIS is prepared

NSW Department of Planning and Environment (DP&E) place Malabar's EIS on public display for around four weeks

Malabar responds to submissions

The DP&E assesses Malabar's submission, including any issues or concerns raised in the submission process

The DP&E or Independent Planning Commission (if applicable) announce its decision

Opportunities for feedback



Community feedback was considered in the development of our Scoping Report in support of a Request for Secretary's Environmental Assessment Requirements ("SEARs").

We will engage with the local community during the preparation of the Environmental Impact statement (EIS) to ensure community feedback is gathered, considered in our future plans, and concerns are addressed.

The studies that support the EIS are being prepared by recognised experts and include assessments of potential impacts on agriculture and agribusiness, water, biodiversity, heritage, air quality, amenity and the road network.

The EIS will be accompanied by a social impact assessment and an economic assessment.

The community has the opportunity to submit feedback directly to the DP&E.

Malabar will engage with the community to address any concerns raised.

In addition, Malabar must formally respond to any issues raised in submissions.

An approved application may include conditions that address any outstanding concerns raised by the community.

REHABILITATION UPDATE

When Malabar purchased the exploration licence for the Malabar Underground Project in 2018, we also purchased the now-closed Drayton open-cut mine. This will allow us to use the existing infrastructure on that site (now known as Maxwell Infrastructure) to process and then transport our coal, reducing any impacts on our neighbours.

We are responsible for rehabilitating the open cut, something we take very seriously. Within days of having access to the site, we had started rehabilitation work. This quickly ramped up, with around 30 people on site, working on the rehabilitation tasks.



Since then, we have made great progress. Over 90 hectares of land has been rehabilitated to either a pasture or seeding with native woodland species. While we still have work ahead of us, we are on schedule and eager to ensure we finish the job to a high standard.

When we rehabilitate land, we want to create a post-mining landscape that is compatible with our surroundings and capable of sustaining productive land use. We are pleased with the outcomes of the rehabilitation work we have undertaken to date.

Recently, we welcomed 50 Angus-Charolais cross steers to site. The steers were bought from Coolie Angus, a beef cattle business in the hills of Merriwa and are being managed on site by a local landholder.

Having cattle on our rehabilitated pasture allows us to better control grass species, promote species diversity and reduce the risk of bushfire. We have also found that the rehabilitated pasture provides more feed for stock during the drier conditions than typical rural grazing land.

Most importantly, this demonstrates we can create a post-mining landscape that is compatible with the surrounding landscape and capable of sustaining a productive land use after mining.



OUR WORK WITH THE COMMUNITY

Malabar plays an active role in the local community. We support a wide range of community groups and charities including aged care, sports, education, and emergency services.

In the second half of 2018, we donated and installed a sensory garden at Muswellbrook Public School. A sensory garden is a collection of plants and materials with different textures, shapes, colours, scents and heights. These materials are then laid out in such a way as to stimulate the senses. Our team worked with Muswellbrook Public School to design and build the sensory garden, then spent some time with the kids watching them enjoy using it!

To coincide with National Threatened Species Day, Malabar donated to Wildlife Aid to help fund rescues, veterinary care, and the specialised diets and rehabilitation of native wildlife in the Upper Hunter Valley.

Wildlife Aid is a not-for-profit organisation of dedicated volunteers that donate their time and resources to rescue and rehabilitate native wildlife. Our team were lucky enough to have the opportunity to meet some of the staff at Wildlife Aid and the animals in their care.



SOLAR FARM UPDATE

In our previous update we confirmed our intention to build a solar farm, known as the Maxwell Solar Project, on a portion of the old Drayton Mine site.

Since the last newsletter, Malabar has applied for Secretary's Environmental Assessment Requirements from the NSW Department of Planning and Environment for the Maxwell Solar Project. We've also commenced the technical studies to support the DA and EIS for the Solar Project.

If you would like to register for further information about the Maxwell Project, please send an email titled 'Register for Maxwell Project Information' to info@malabarcoal.com.au and include your name, address and phone number.

If you have any other questions about Malabar Coal or the Maxwell Project, please do not hesitate to contact us.

Donna McLaughlin
Environment and Community Manager

Email: info@malabarcoal.com.au
Phone: (02) 6542 0283
Web: www.malabarcoal.com.au

COMMUNITY NEWSLETTER

Fourth Edition | June 2019

This newsletter includes the latest news about:

- I. Malabar's proposed underground-only mine, the Maxwell Project;
- II. Our progress rehabilitating the Maxwell Infrastructure site;
- III. Our work with the local community; and
- IV. The latest on the Maxwell Solar Project.

Who we are

Malabar Coal is an independent Australian-owned mining company based in New South Wales.

Malabar Coal owns:

- the Maxwell Project exploration licence (EL 5460)
- the now-closed Drayton Mine and associated infrastructure – re-named “Maxwell Infrastructure”
- the Spur Hill Project exploration licence (EL 7429).

This update focusses on the Maxwell Project, but further information about our other assets is available on our website – www.malabarcoal.com.au.

Maxwell Project update

Over the past few months, the Malabar team has been finalising the detailed scientific assessments that are required as part of the Environmental Impact Statement (EIS) and Development Application (DA) process for the Maxwell Project.

This important work is nearly complete. We hope to submit these documents in the next month or so.

After the documents have been lodged, the EIS will be placed on public display for the community to review.

Typically, EIS documents are placed in public areas like Council Chambers. The EIS will also be available to download online from the NSW Government's “Major Projects” website (www.majorprojects.planning.nsw.gov.au). We will provide more information on how you can read the EIS documents when they are lodged.



Considering local points of view







Since Malabar announced its plan to acquire the Maxwell Project in early 2017, we have hosted community information sessions, consulted local community groups, met regularly with our Community Consultative Committee, engaged directly with representatives of the Aboriginal community, met with stakeholders on site and distributed community newsletters, like this one.

This has helped us to gather and carefully consider your feedback as we develop our plans.

The table below outlines what we have heard from important community stakeholders like you, and the steps we have taken to address your feedback.

What we heard...

How we have addressed this feedback...

<p>Will the Project be visible from the Golden Highway?</p> 	<ul style="list-style-type: none"> • No. We have placed the entry to this underground mine in a natural valley and reduced the height of our infrastructure so that it cannot be seen from the Golden Highway. • We will also use the existing infrastructure around 15km north of the Golden Highway (previously used for the Drayton Mine), limiting any changes to what our neighbours already see.
<p>Will the project impact the local horse studs?</p> 	<ul style="list-style-type: none"> • Our mine is completely underground. • We have carefully located the mine entry so that our infrastructure cannot be seen from any properties to the south of the Golden Highway. Also, the mine entry will be about 5km from the nearest neighbour to the south. • By mining underground, we will significantly reduce any dust, light and noise impacts on local properties. • There will be no measurable dust, noise or vibration caused by the Project at the local horse studs. • With the exception of a small section of Edderton Road, we will only mine under land we own and there would be no subsidence impacts on other properties. • We believe we can comfortably coexist with our neighbours to the south of the proposed mine.
<p>Will the project impact properties to the north of the Maxwell Infrastructure?</p> 	<ul style="list-style-type: none"> • The underground mining operation will be over 10km south of the Maxwell Infrastructure site, so noise and dust effects will be generally lower than that of the previous operations on the site. • Coal preparation plant activities and train loading will be consistent with the previously approved limits.
<p>Will there be impacts to local roads?</p> 	<ul style="list-style-type: none"> • To limit Project related traffic movements on the Golden Highway and Edderton Road, Malabar employees will use the existing site access from Thomas Mitchell Drive to access the underground mine. • Edderton Road will remain open for use throughout the Project. Any potential realignment would improve the safety of the intersection with the Golden Highway and would have minimal impact on travel times.
<p>Will the Maxwell Project use lots of water? Or impact the local water supply?</p> 	<ul style="list-style-type: none"> • We will be extremely careful about how we use water on the site. • We will use water treatment systems that maximise the re-use of water on site and remove any requirement to source water externally for mining operations (e.g. from the Hunter River). • As an underground mine, we require significantly less water than an open cut mine that needs to use water for dust minimisation purposes on their extensive haul road networks. • We will develop a site water management system that avoids the need for controlled release of mine-affected water to the Hunter River.
<p>Will the project mine underneath my land?</p> 	<ul style="list-style-type: none"> • No, we already own all freehold land required for the mine. There will be no subsidence on our neighbours' lands.
<p>What kind of coal will this mine produce?</p> 	<ul style="list-style-type: none"> • This mine will target majority coking coal for use in steel making.

Rehabilitation update

Since our last update, we have continued to work on the rehabilitation of the old Drayton mine site.

You may have seen the newspaper articles in the Muswellbrook Chronicle and the Singleton Argus about the cattle we have had grazing on rehabilitated land.

To date, we have just over 640 hectares of rehabilitated pasture and woodland. Last month we planted over 8000 saplings on our existing woodland rehabilitation areas.



Solar Farm Update

We are continuing to progress our plans for a solar farm on a portion of the old Drayton Mine site, known as the Maxwell Solar Project. The Solar Project requires a separate DA and EIS.

Malabar in the community

The Malabar team was on hand at the **St Heliers Heavy Horse Field Days** held in Muswellbrook on the 18th and 19th of May. Malabar was one of the major sponsors of the event, supporting the famous Pumpkin Snatch and the Historical Working Farm Implements class. Our team was on site all weekend to talk to the community and answer any questions people had regarding the Maxwell Project.

Calrossy Anglican School's Year 12 Earth and Environmental Science class visited Maxwell Infrastructure last month. During the visit students learned all about coal mining, from the science behind coal exploration through to the complete rehabilitation of the mine site.

We also discussed methods for preserving cultural heritage and how we create a post-mining landscape capable of sustaining productive land use.

Following the site visit, students will develop and submit a poster and scientific report. We wish all the students the best of luck with this project and with their HSC studies!



Project Progress

Milestones

Malabar takes ownership of Maxwell Infrastructure and the Maxwell Project

Malabar begins rehabilitation and commences technical and environmental studies to support the Gateway application

Malabar lodged a Referral under the Commonwealth EPBC Act

Malabar obtains Gateway Certificate from the Mining and Petroleum Gateway Panel

Malabar seeks feedback from the community to inform the assessment requirements for the EIS

**WE ARE
HERE**

Malabar's EIS is prepared

NSW Department of Planning, Industry and Environment place Malabar's EIS on public display for around four weeks

Malabar responds to submissions

The Department of Planning, Industry and Environment assesses Malabar's submission, including any issues or concerns raised in the submission process

The Department of Planning, Industry and Environment or Independent Planning Commission (if applicable) announce its decision

Opportunities for feedback



Community feedback was considered in the development of our Scoping Report in support of a Request for Secretary's Environmental Assessment Requirements ("SEARs").

We have engaged with the local community during the preparation of the Environmental Impact statement (EIS) to ensure community feedback has been gathered, considered in our future plans, and concerns are addressed.

The studies that support the EIS are being finalised by recognised experts and include assessments of potential impacts on agriculture and agribusiness, water, biodiversity, heritage, air quality, amenity and the road network.

When the final EIS is submitted in the coming weeks, it will be accompanied by a social impact assessment and an economic assessment.

We will let you know when the EIS has been submitted. At that point, the community has the opportunity to submit feedback directly to the Department of Planning, Industry and the Environment.

Malabar will engage with the community to address any concerns raised.

In addition, Malabar must formally respond to any issues raised in submissions.

An approved application may include conditions that address any outstanding concerns raised by the community.

Contact Us

If you would like to register for further information about the Maxwell Project, please send an email titled 'Register for Maxwell Project Information' to info@malabarcoal.com.au and include your name, address and phone number.

If you have any other questions about Malabar Coal or the Maxwell Project, please do not hesitate to contact us.

Donna McLaughlin
Environment and Community Manager

Email: info@malabarcoal.com.au

Phone: (02) 6542 0283

Web: www.malabarcoal.com.au

