



MAXWELL PROJECT

ATTACHMENT 3

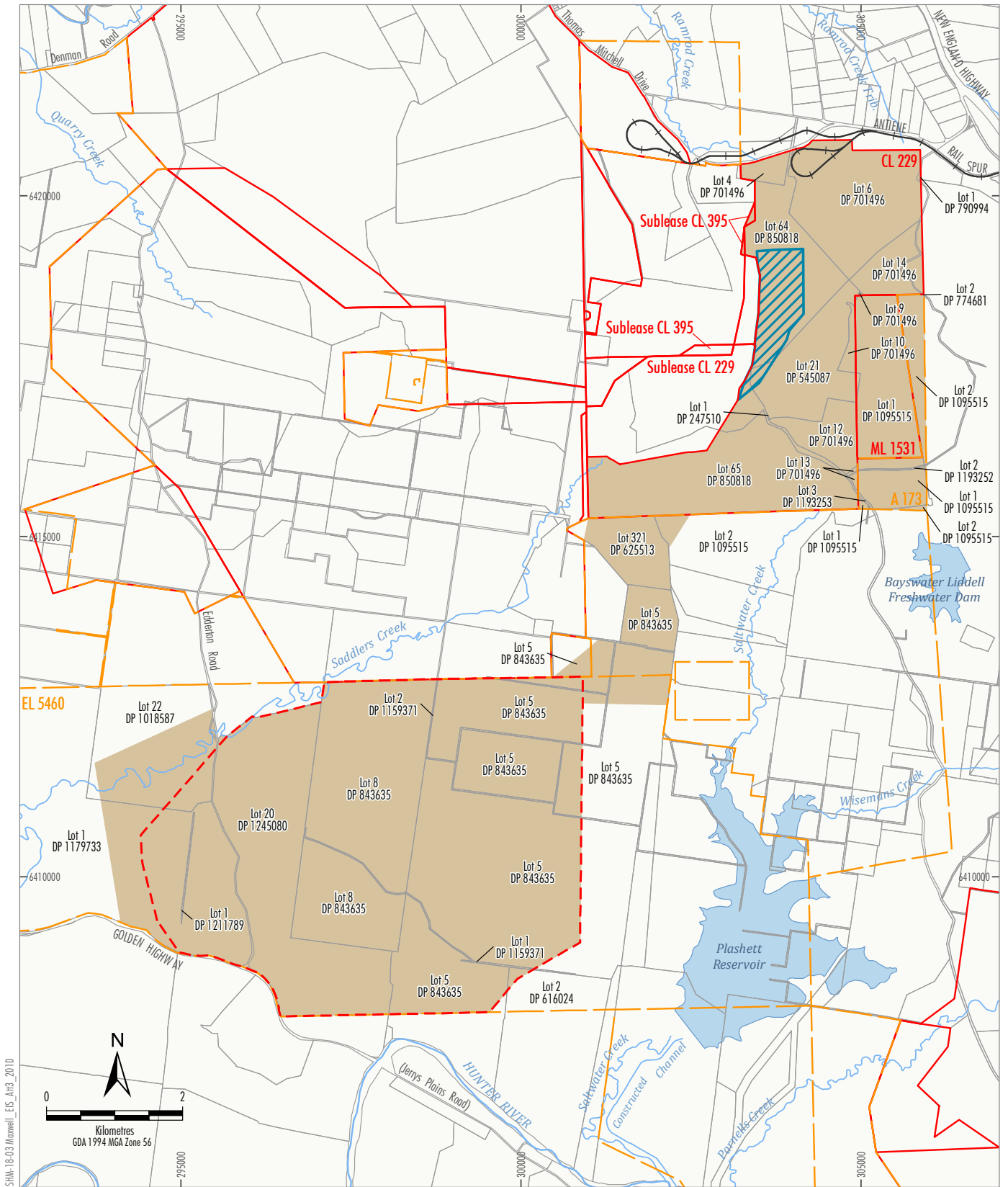
**Development Application Area
and Real Property Descriptions**



**Table A3-1
Schedule of Lands**

Tenure Type	Lot	Deposited Plan (DP)	Lot Owner/Description
Freehold	4	701496	Malabar Coal (Drayton Management) Pty Ltd
Freehold	9	701496	Malabar Coal (Drayton Management) Pty Ltd
Freehold	10	701496	Malabar Coal (Drayton Management) Pty Ltd
Freehold	12	701496	Malabar Coal (Drayton Management) Pty Ltd
Freehold	13	701496	Malabar Coal (Drayton Management) Pty Ltd
Freehold	14	701496	Malabar Coal (Drayton Management) Pty Ltd
Freehold	6	701496	Malabar Coal (Drayton Management) Pty Ltd & Malabar Coal (Drayton) Pty Ltd
Freehold	21	545087	Malabar Coal (Drayton Management) Pty Ltd & Malabar Coal (Drayton) Pty Ltd
Freehold	64	850818	Malabar Coal (Drayton Management) Pty Ltd & Malabar Coal (Drayton) Pty Ltd
Freehold	65	850818	Malabar Coal (Drayton Management) Pty Ltd & Malabar Coal (Drayton) Pty Ltd
Freehold	1	1159371	Malabar Coal (Maxwell Management) Pty Ltd
Freehold	1	1179733	Malabar Coal (Maxwell Management) Pty Ltd
Freehold	1	1211789	Malabar Coal (Maxwell Management) Pty Ltd
Freehold	2	616024	Malabar Coal (Maxwell Management) Pty Ltd
Freehold	2	1159371	Malabar Coal (Maxwell Management) Pty Ltd
Freehold	20	1245080	Malabar Coal (Maxwell Management) Pty Ltd
Freehold	5	843635	Malabar Coal (Maxwell Management) Pty Ltd
Freehold	8	843635	Malabar Coal (Maxwell Management) Pty Ltd
Freehold	22	1018587	Malabar Coal (Maxwell Management) Pty Ltd
Freehold	321	625513	Malabar Coal (Maxwell Management) Pty Ltd
Freehold	1	790994	AGL Macquarie Pty Ltd
Freehold	1	1095515	AGL Macquarie Pty Ltd
Freehold	2	774681	AGL Macquarie Pty Ltd
Freehold	2	1095515	AGL Macquarie Pty Ltd
Freehold	2	1193252	AGL Macquarie Pty Ltd
Freehold	3	1193253	AGL Macquarie Pty Ltd
Crown	1	247510	The State of New South Wales
Road	-	-	Edderton Road
Road	-	-	Golden Highway
Muswellbrook Shire Council or Department of Lands (Crown)	-	-	Various Council and Crown Public and Unformed Roads located within, between or adjacent to the above Parcels of Land
Freehold	-	-	Any Unidentified Historical Title Residues located within, between or adjacent to the above Parcels of Land
Crown	-	-	Creeks or Streams located within, between or adjacent to the above Parcels of Land
Crown	-	-	Any Unidentified Crown Land or Crown Land Historical Title Residues located within, between or adjacent to the above Parcels of Land

Note: Lots listed based on May 2019 NSW Digital Cadastral Data Base (DCDB) boundaries and have not been surveyed or further investigated. Ownership shown has been sourced from title searches conducted in June 2018.



SHK: 18-03 Maxwell_EIS_A43_2010

Source: © NSW Department of Planning and Environment (2019);
NSW Department of Finance, Services & Innovation (2019)

- LEGEND**
- Railway
 - Cadastral Boundary
 - Exploration Licence Boundary
 - Mining and Coal Lease Boundary
 - Development Application Area
 - Excluded from Development Application Area
Upon Physical Commencement of the
Maxwell Solar Project (SSD 18_9820)
 - Indicative Mining Lease Application Area
for Group 9 Minerals (Coal) #

Malabar may also apply for additional tenements for ancillary mining activities.

MALABAR COAL

MAXWELL PROJECT

Development Application Area

Figure A3-1