



MAXWELL UNDERGROUND MINE PROJECT

MINE ENTRY AREA MODIFICATION **MODIFICATION REPORT SUMMARY**



MODIFICATION REPORT SUMMARY

BACKGROUND

The Maxwell Underground Mine Project (the Project) is in the Upper Hunter Valley of New South Wales (NSW), east-southeast of Denman and south-southwest of Muswellbrook.

The Project is owned by Maxwell Ventures (Management) Pty Ltd, a wholly owned subsidiary of Malabar Resources Limited (Malabar).

Development Consent State Significant Development (SSD) 9526 for the Project was granted by the NSW Independent Planning Commission on 22 December 2020. The Project was subsequently approved under the Commonwealth *Environment Protection and Biodiversity Conservation Act 1999* in March 2021 (EPBC 2018/8287).

The Project is an underground mining operation that is approved to operate for 26 years (until 2047).

Malabar is seeking to modify Development Consent SSD 9526 under section 4.55(1A) of the *Environmental Planning and Assessment Act 1979* (the Modification).

MODIFICATION OVERVIEW

The Modification is located wholly within the approved Development Application Area and would comprise the following components:

- repositioning of the underground portal;
- realignment of a small section of the proposed access road at the Maxwell Infrastructure site to utilise an existing haul road and minimise impacts to established mine rehabilitation;
- repositioning of an approved clean water diversion for the mine entry area;
- repositioning of the water treatment facility from the mine entry area to the Maxwell Infrastructure; and
- other minor works and ancillary infrastructure components within existing/approved surface development areas.

The enclosed figure shows the minor extensions to the surface development areas associated with the Modification.

The Modification would result in less than five hectares of additional surface disturbance.

ASSESSMENT OF IMPACTS

The Project (as modified) would continue to comply with existing criteria, performance measures and limits described in Development Consent SSD 9526. Malabar will operate the Project, as modified, in accordance with the existing environmental management plans and environmental monitoring programs.

Malabar has undertaken a review of the potential environmental impacts of the Modification in the Modification Report.

The Modification would involve minimal additional environmental impact compared to the approved Project.

JUSTIFICATION FOR THE MODIFICATION

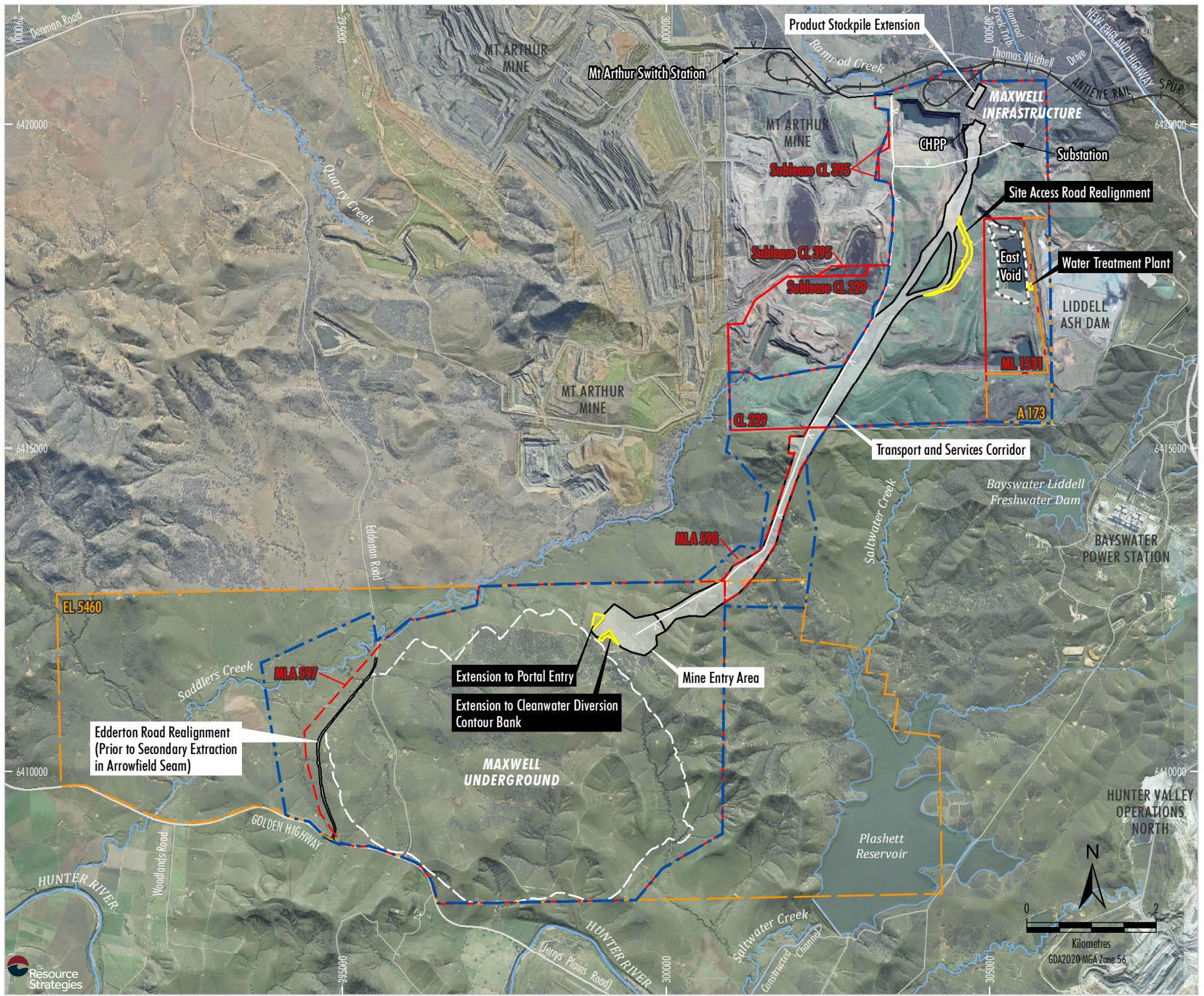
The Project will operate in accordance with Development Consent SSD 9526 and will be substantially the same as the approved Project.

The NSW Independent Planning Commission found that the approved Project will “deliver significant economic benefits for the local area, region and State including 250 construction and 350 operational jobs”.

The Modification would not change the mining method, resource, annual production, mine life, total resource recovered or workforce, and therefore there would be no material change to the significant net positive benefits of the Project to the State and local governments.

The Modification would also provide the following benefits:

- a safer, straight drift at a reduced grade that would remove the requirement for turning machinery along the decline;
- a small reduction in the time required to achieve first run-of-mine coal;
- a reduction in capital costs associated with the structural support of the underground portal;
- a reduction in the number of conveyors and transfer stations required at the mine entry area due to the straight drift;
- optimise costs and infrastructure requirements associated with the water treatment facility and improve water management outcomes for the Project; and
- reduction of disturbance to previously rehabilitated areas through the utilisation of an existing road at the Maxwell Infrastructure.



- LEGEND**
- Railway
 - Exploration Licence Boundary
 - Mining and Coal Lease Boundary
 - Mining Lease Application Boundary
 - Proposed Ausgrid 66 kV Power Supply Extension #
 - Approved Maxwell Mine
 - Development Application Area
 - Indicative Surface Development Area
 - CHPP Reject Emplacement Area
 - Extent of Conventional Subsidence from Underground Mining
 - 66 kV Power Supply
 - Proposed Modification
 - Indicative Additional Surface Development Area

Subject to separate assessment and approval.

Source: NSW Spatial Services (2021);
MSEC (2019); AECOM (2019)
Orthophoto Mosaic: 2020, 2019